



Trustee Voting Area Process

Lakeside Union School District

January 18, 2023



Voting Area Process

DATE	ACTIVITY
September 14, 2023	Board adopts resolution to initiate transition to By-Trustee Area elections
December 4, 2023	Special Board Meeting: First Pre-Map Public Hearing and Presentation
December 11, 2023	Special Board Meeting: Second Pre-Map Public Hearing and Presentation
January 18, 2024	Board Meeting: First Public Hearing on Voting Area Scenarios
February 15, 2024	Board Meeting: Second Public Hearing on Voting Area Scenarios
February 29, 2024	Special Board Meeting: Final Public Hearing on Voting Area Scenarios Board Selection of Voting Area Map Board Consideration of Change in Election Method
March TBD 2024	County Committee on School District Organization Holds a Public Hearing and Considers Trustee Area Map. Cooperative Strategies sends Final Voting Area Map to the County of Registrar of Voters
November 8, 2024	First Election Held Utilizing Voting Areas

Considerations in Voting Areas

Population Balance

Each area shall contain nearly equal number of inhabitants

Federal Law Complaint

Drawn to comply with the Federal Voting Rights Act

Other Criteria

Other Traditional / Local Considerations

May not adopt boundaries for the purpose of favoring or discriminating against an incumbent, political candidate, or political party

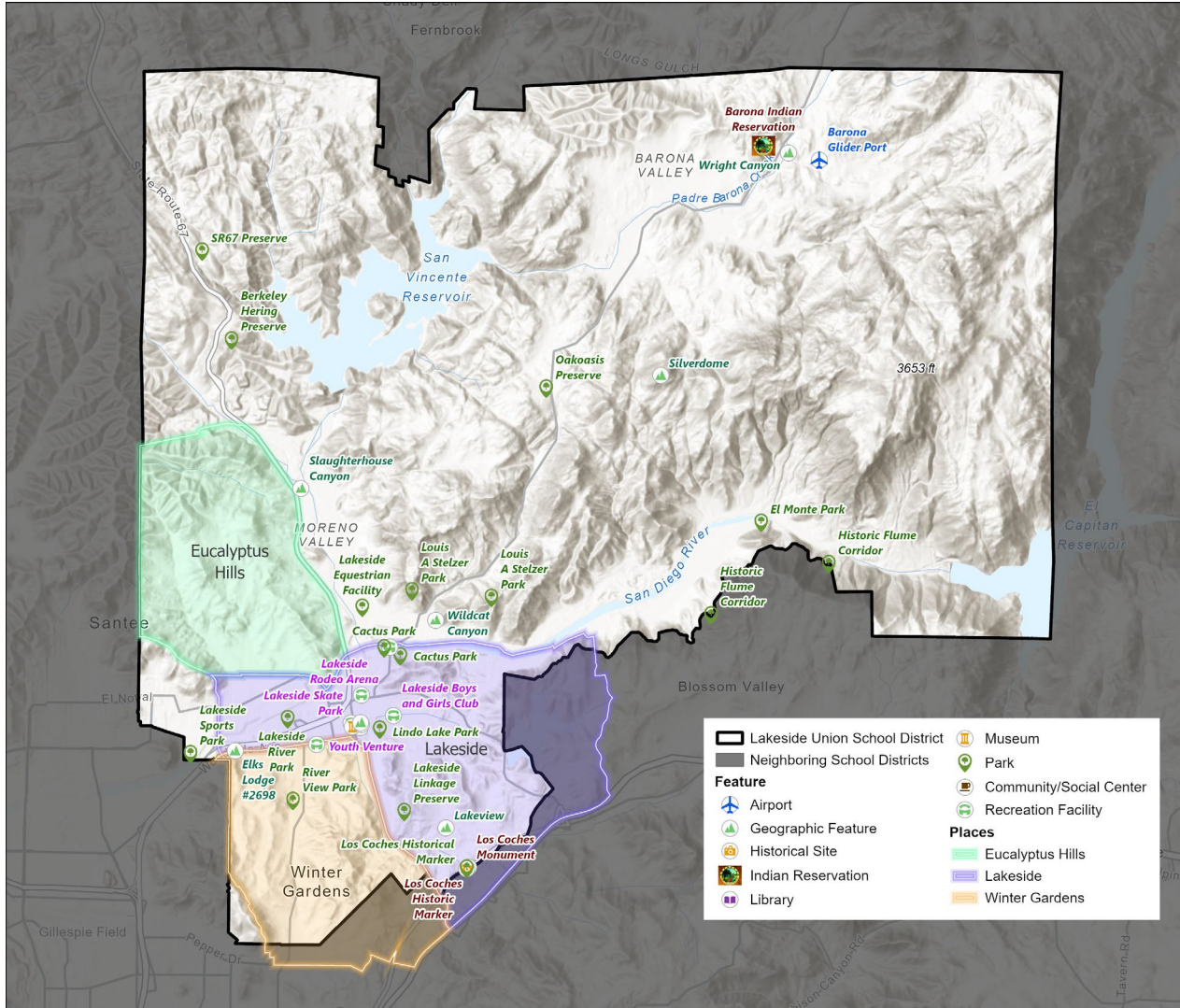
AB 764 / Elections Code 21130

New criteria for maps in order of priority

- (1) Contiguous**
- (2) Local Neighborhoods/ Communities of Interest**
- (3) City/census designated places**
- (4) Natural/artificial boundaries**
- (5) Compactness**

District Demographics

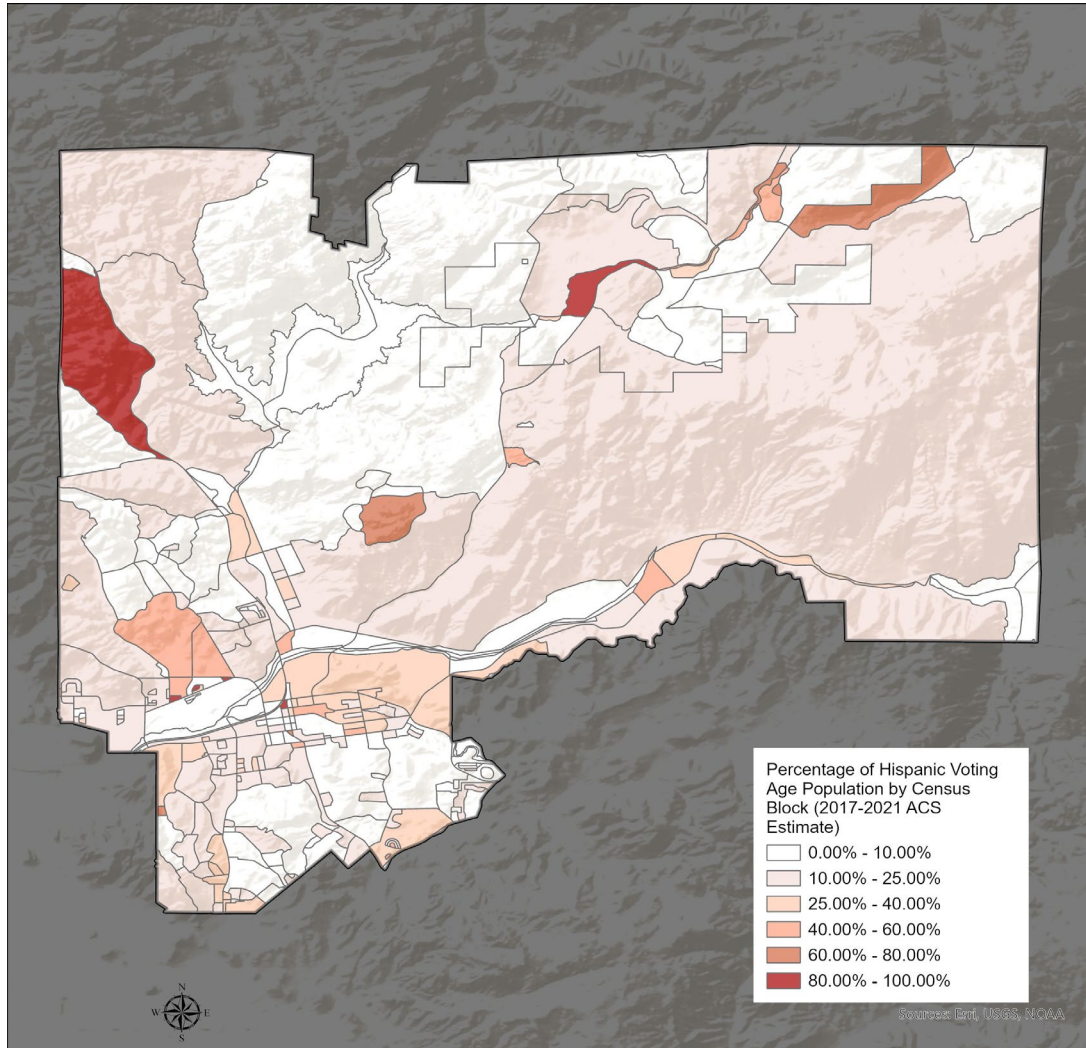
2020 CENSUS DATA



Population	Total Population		Age 18 +	
	Total	%	Total	%
Hispanic/Latino	10,152	23.3%	6,749	20.1%
White	27,631	63.4%	22,708	67.8%
Black/ African American	1,029	2.4%	690	2.1%
American Indian/Alaska Native	757	1.7%	554	1.7%
Asian	1,012	2.3%	857	2.6%
Native Hawaiian/ Pacific Islander	112	0.3%	94	0.3%
Other	255	0.6%	167	0.5%
Two or More Races	2,646	6.1%	1,687	5.0%
Total Population	43,594	100%	33,506	100%

District Demographics

HISPANIC CITIZEN VOTING AGE POPULATION ESTIMATES

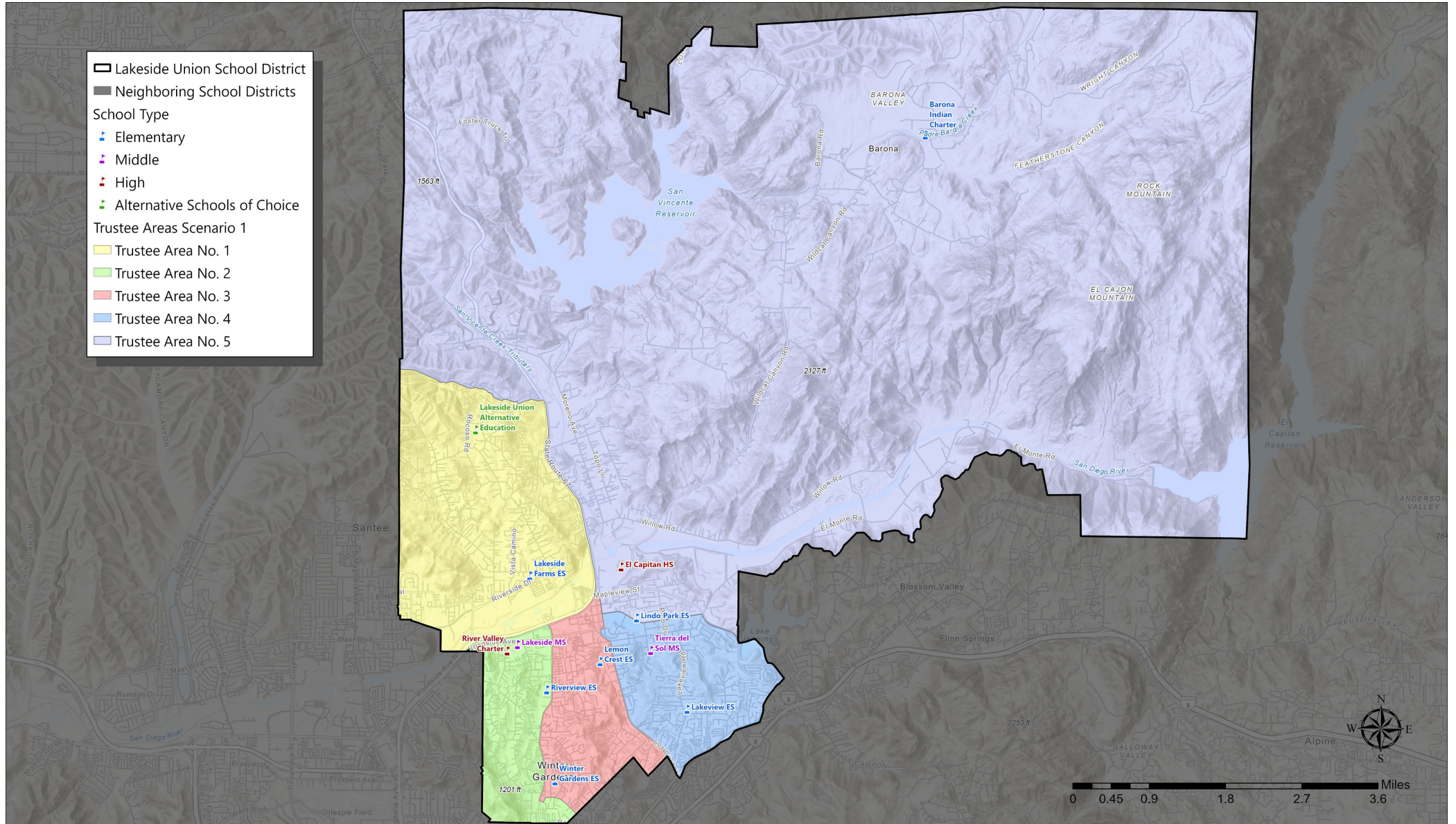


Population	CVAP 2017-2021 [1]	
	Total	%
Hispanic/Latino	6,248	18.5%
White	24,943	73.7%
Black/ African American	639	1.9%
American Indian/Alaska Native	473	1.4%
Asian	595	1.8%
Native Hawaiian/ Pacific Islander	80	0.2%
Two or More Races	870	2.6%
Total Population	33,848	100%

[1] CVAP data taken from the California Statewide Database which provides the 2017-2021 American Community Survey CVAP estimates with DOJ by 2020 Census blocks and adjustment to reallocate incarcerated persons to their last known residential address.

Conceptual Trustee Areas

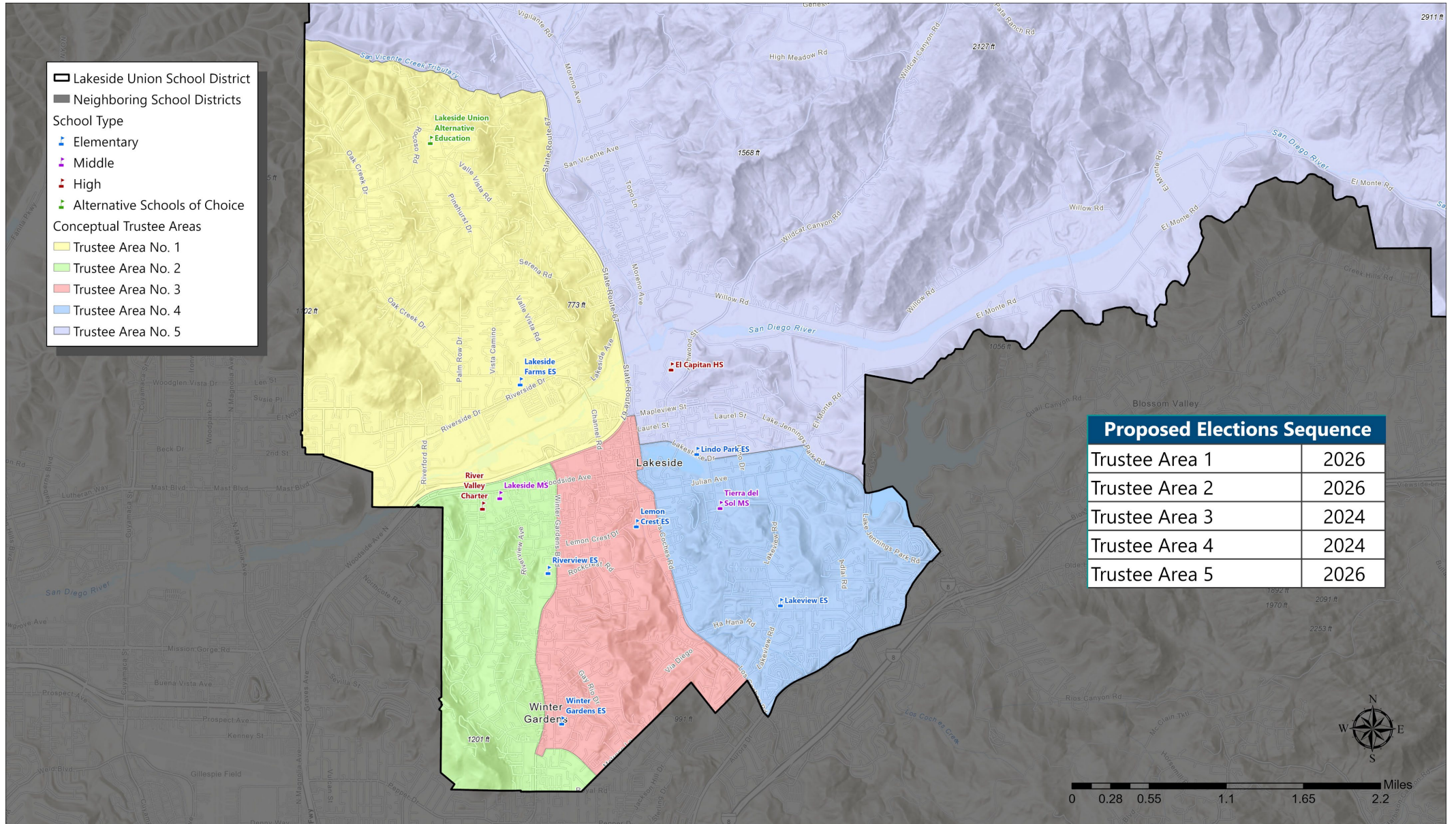
Scenario 1



Conceptual Trustee Areas

Scenario 1

Focus on Southern Region



Conceptual Trustee Areas

Scenario 1

Total Population:	43,594	Ideal Trustee Area Size:	8,719	Variance:	6.2%
-------------------	--------	--------------------------	-------	-----------	------

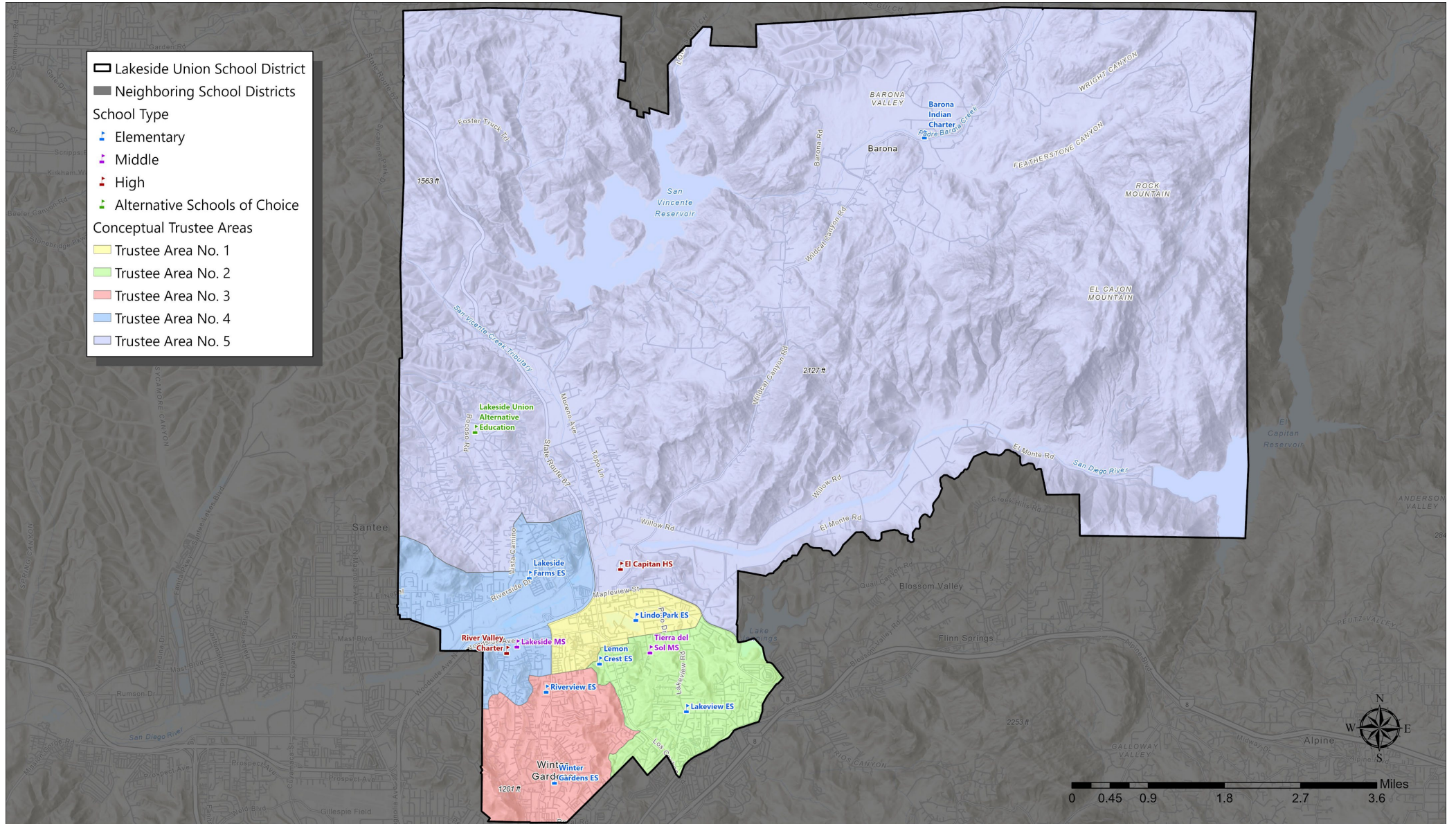
TRUSTEE AREA	Trustee Area 1		Trustee Area 2		Trustee Area 3		Trustee Area 4		Trustee Area 5	
TP* vs. CVAP**	TP	CVAP	TP	CVAP	TP	CVAP	TP	CVAP	TP	CVAP
Population	9,071	7,162	8,577	6,317	8,807	7,018	8,606	6,721	8,533	6,630
Population Variance	4.0%	N/A	-1.6%	N/A	1.0%	N/A	-1.3%	N/A	-2.1%	N/A
Hispanic/Latino	17.8%	18.7%	26.7%	20.2%	22.8%	11.6%	22.7%	13.7%	26.7%	28.6%
White	69.8%	75.3%	59.7%	71.6%	64.8%	84.6%	67.3%	77.7%	54.8%	58.4%
Black/African American	3.5%	1.6%	3.0%	2.7%	2.1%	0.6%	0.8%	1.5%	2.4%	3.2%
American Indian/Alaska Native	0.4%	0.5%	0.8%	0.3%	0.6%	1.3%	0.6%	0.8%	6.5%	4.2%
Asian	2.4%	1.6%	2.6%	3.3%	2.0%	0.2%	2.4%	2.8%	2.2%	1.1%
Native Hawaiian/Other Pacific Islander	0.2%	0.8%	0.3%	0.2%	0.4%	0.0%	0.1%	0.1%	0.3%	0.1%
Other	0.5%	N/A	0.6%	N/A	0.8%	N/A	0.4%	N/A	0.6%	N/A
Two or More Races	5.4%	1.6%	6.2%	1.7%	6.5%	1.7%	5.8%	3.3%	6.5%	4.5%

[**] CVAP data taken from the California Statewide Database which provides the 2017-2021 American Community Survey CVAP estimates with DOJ by 2020 Census blocks and adjustment to reallocate incarcerated persons to their last known residential address.



Conceptual Trustee Areas

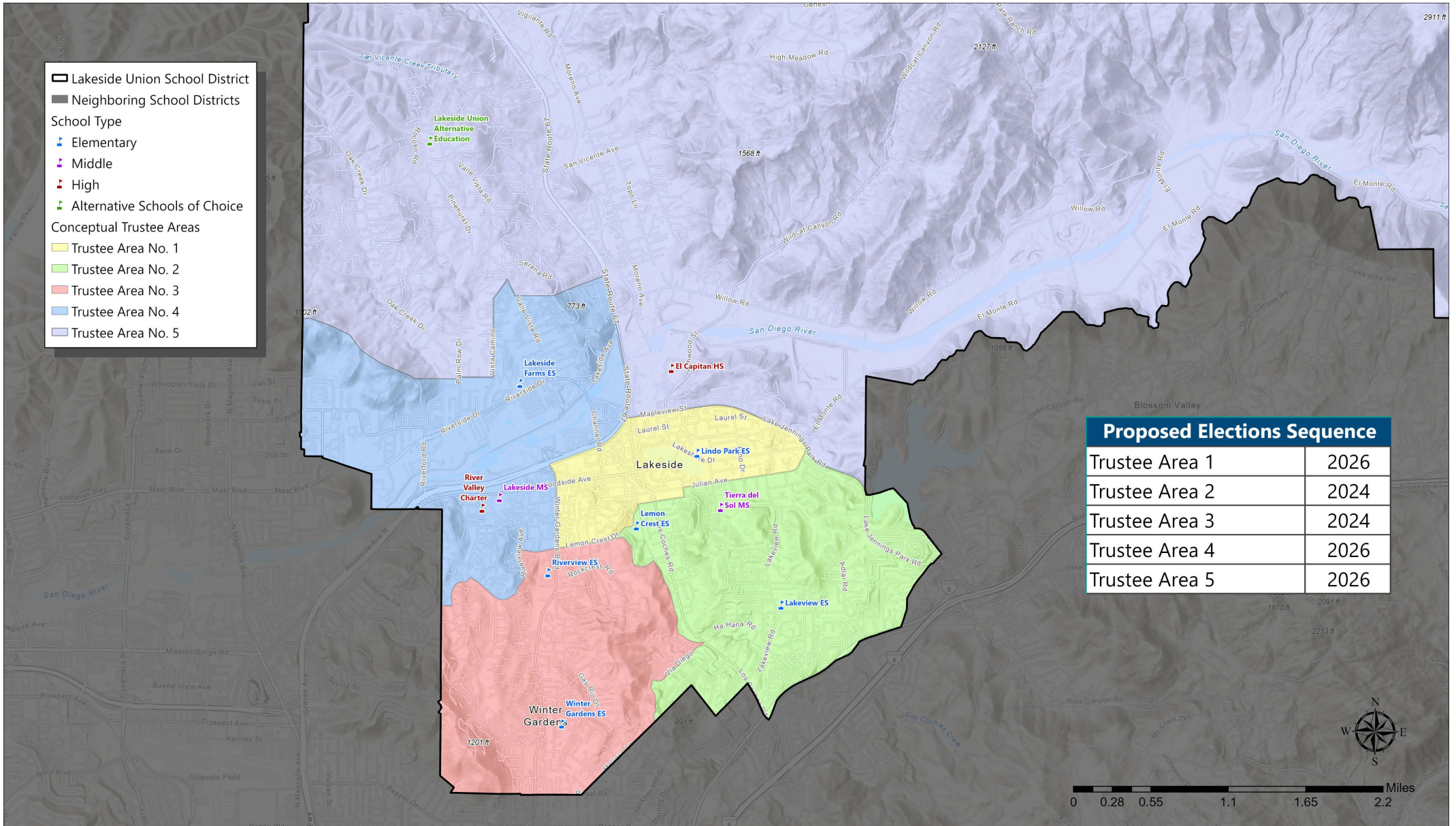
Scenario 2



Conceptual Trustee Areas

Scenario 2

Focus on Southern Region



Conceptual Trustee Areas

Scenario 2

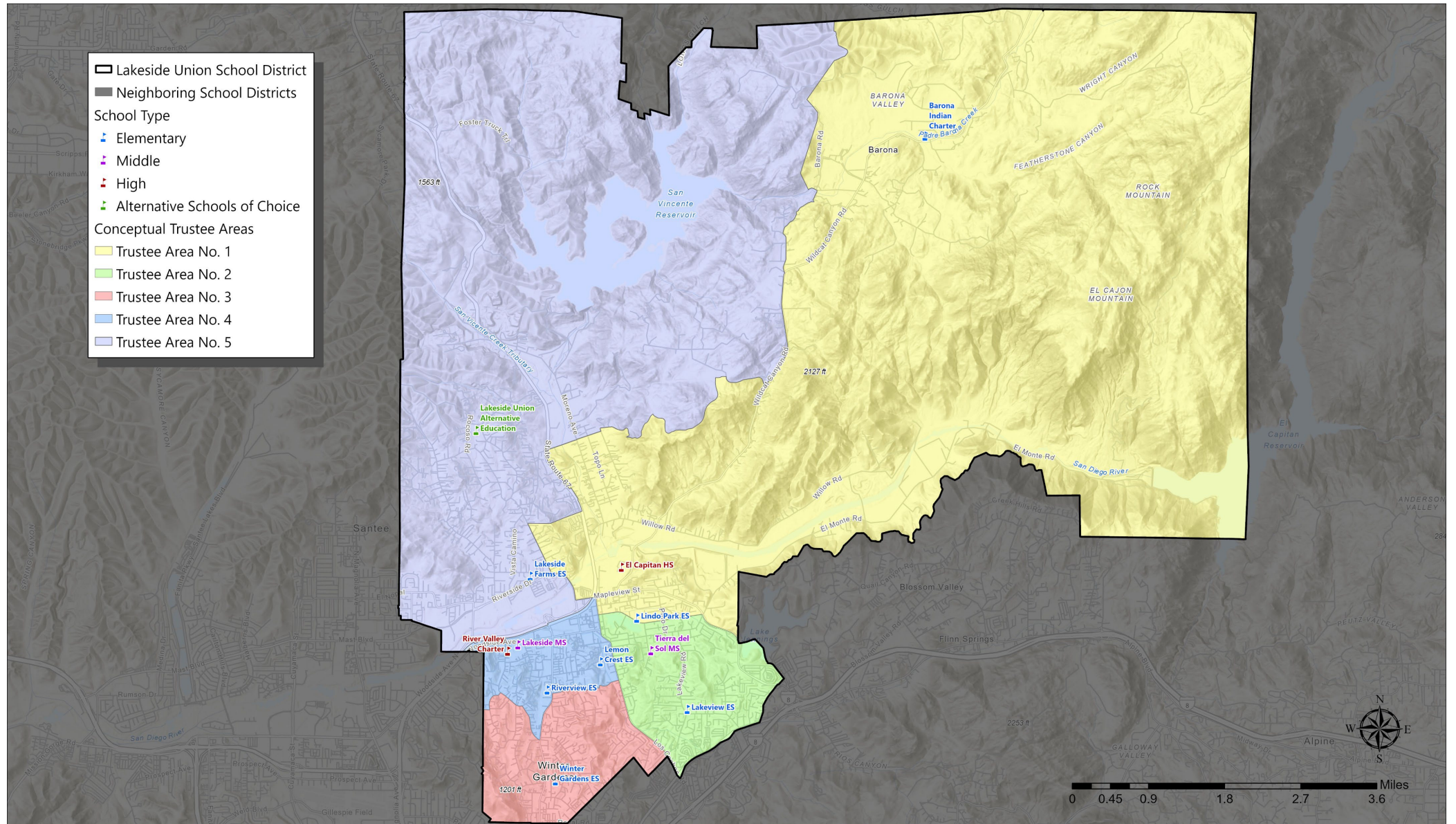
Total Population:	43,594	Ideal Trustee Area Size:	8,719	Variance:	3.8%
-------------------	--------	--------------------------	-------	-----------	------

TRUSTEE AREA	Trustee Area 1		Trustee Area 2		Trustee Area 3		Trustee Area 4		Trustee Area 5	
TP* vs. CVAP**	TP	CVAP	TP	CVAP	TP	CVAP	TP	CVAP	TP	CVAP
Population	8,775	6,466	8,743	6,774	8,880	7,213	8,649	6,436	8,547	6,959
Population Variance	0.6%	N/A	0.3%	N/A	1.8%	N/A	-0.8%	N/A	-2.0%	N/A
Hispanic/Latino	30.6%	24.5%	20.7%	12.5%	23.7%	14.4%	22.5%	22.7%	18.8%	18.9%
White	55.2%	67.8%	69.7%	79.8%	64.9%	81.6%	65.2%	69.0%	61.8%	69.4%
Black/African American	3.1%	1.6%	0.7%	1.3%	1.4%	0.8%	2.6%	2.3%	4.0%	3.5%
American Indian/Alaska Native	0.6%	2.0%	0.5%	0.0%	0.7%	0.4%	0.5%	0.6%	6.5%	4.0%
Asian	2.2%	0.1%	2.4%	2.8%	2.0%	1.7%	3.1%	2.8%	1.9%	1.3%
Native Hawaiian/Other Pacific Islander	0.5%	0.0%	0.1%	0.1%	0.3%	0.2%	0.3%	0.9%	0.2%	0.1%
Other	0.4%	N/A	0.5%	N/A	0.8%	N/A	0.3%	N/A	0.9%	N/A
Two or More Races	7.4%	4.0%	5.4%	3.4%	6.3%	0.9%	5.5%	1.7%	5.8%	2.9%

^(*) CVAP data taken from the California Statewide Database which provides the 2017-2021 American Community Survey CVAP estimates with DOJ by 2020 Census blocks and adjustment to reallocate incarcerated persons to their last known residential address.

Conceptual Trustee Areas

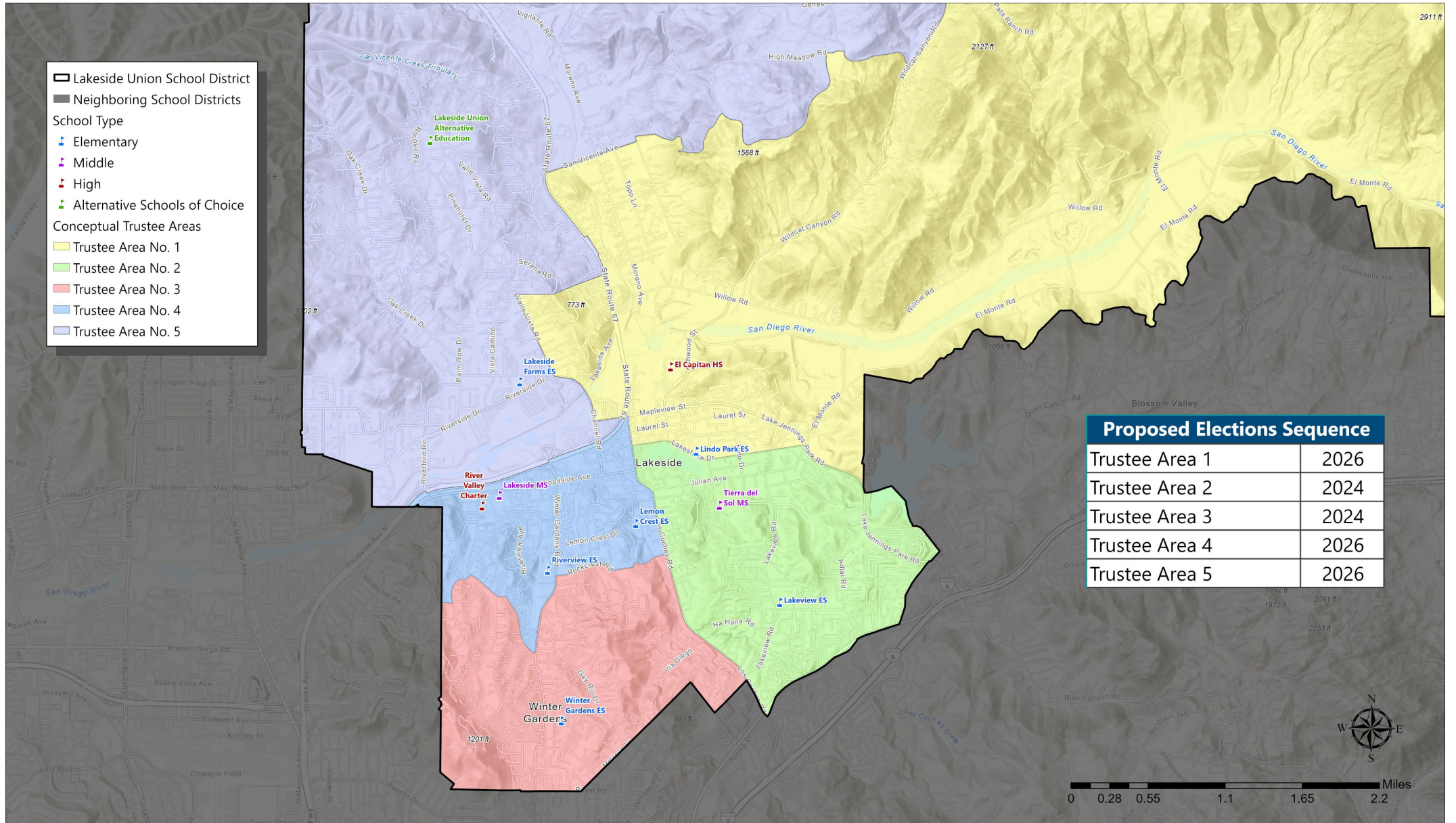
Scenario 3



Conceptual Trustee Areas

Scenario 3

Focus on Southern Region



Conceptual Trustee Areas

Scenario 3

Total Population:	43,594	Ideal Trustee Area Size:	8,719	Variance:	2.6%
-------------------	--------	--------------------------	-------	-----------	------

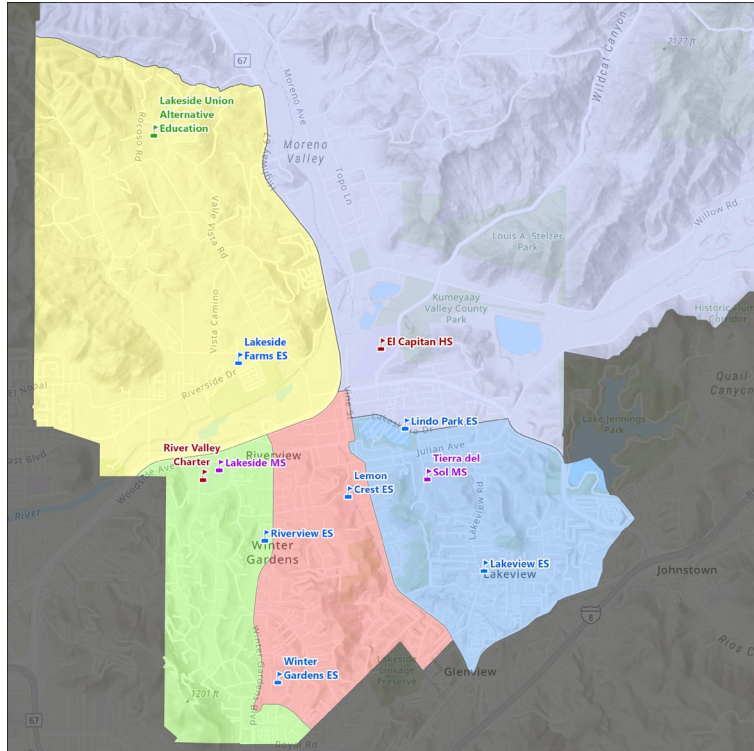
TRUSTEE AREA	Trustee Area 1		Trustee Area 2		Trustee Area 3		Trustee Area 4		Trustee Area 5	
TP* vs. CVAP**	TP	CVAP	TP	CVAP	TP	CVAP	TP	CVAP	TP	CVAP
Population	8,770	6,670	8,625	6,732	8,628	6,945	8,718	6,372	8,853	7,129
Population Variance	0.6%	N/A	-1.1%	N/A	-1.0%	N/A	0.0%	N/A	1.5%	N/A
Hispanic/Latino	27.4%	28.8%	22.8%	13.7%	22.5%	13.5%	26.8%	18.1%	17.0%	18.4%
White	54.5%	58.8%	67.3%	77.7%	66.4%	83.6%	58.4%	72.8%	70.4%	75.0%
Black/African American	2.3%	3.1%	0.8%	1.5%	1.3%	0.3%	3.9%	3.0%	3.5%	1.7%
American Indian/Alaska Native	6.2%	3.9%	0.6%	0.8%	0.7%	0.4%	0.7%	1.2%	0.5%	0.7%
Asian	2.2%	0.8%	2.4%	2.8%	2.1%	1.2%	2.5%	2.2%	2.4%	1.8%
Native Hawaiian/Other Pacific Islander	0.3%	0.1%	0.1%	0.1%	0.2%	0.2%	0.5%	0.0%	0.2%	0.8%
Other	0.5%	N/A	0.4%	N/A	0.9%	N/A	0.6%	N/A	0.6%	N/A
Two or More Races	6.5%	4.6%	5.8%	3.3%	6.0%	0.8%	6.7%	2.7%	5.4%	1.6%

[**] CVAP data taken from the California Statewide Database which provides the 2017-2021 American Community Survey CVAP estimates with DOJ by 2020 Census blocks and adjustment to reallocate incarcerated persons to their last known residential address.



Conceptual Trustee Areas

SCENARIO 1

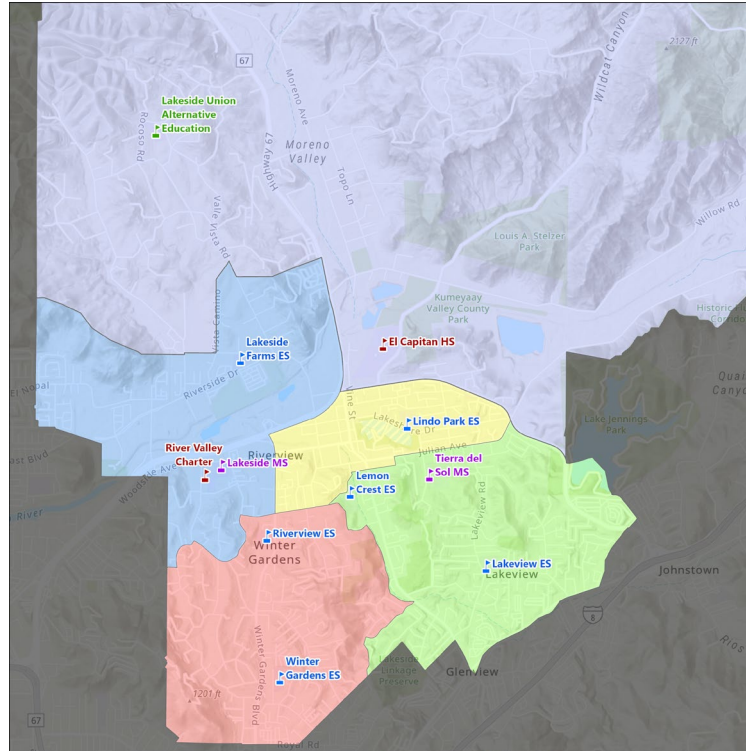


POPULATION VARIANCE: 6.2%

Hispanic CVAP, TA5: 28.6%

American Indian CVAP, TA 5: 4.2%

SCENARIO 2

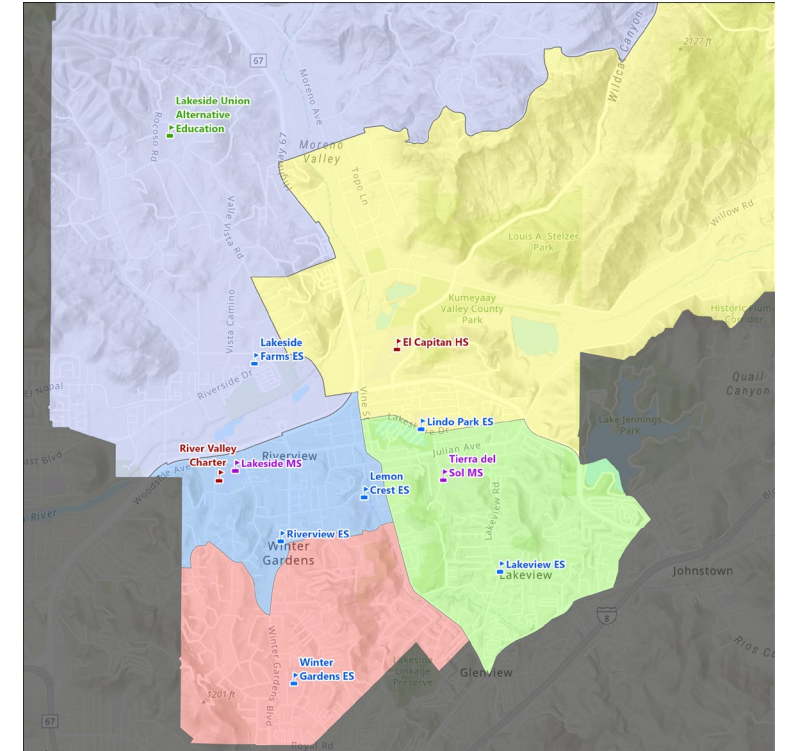


POPULATION VARIANCE: 3.8%

Hispanic CVAP, TA1: 24.5%

American Indian CVAP, TA 5: 4.0%

SCENARIO 3



POPULATION VARIANCE: 2.9%

Hispanic CVAP, TA1: 28.8%

American Indian CVAP, TA 1: 3.1%