

# LAKESIDE UNION SCHOOL DISTRICT

Office of the Superintendent  
12335 Woodside Avenue  
Lakeside, California 92040  
(619) 390-2600

September 20, 2023  
Open Session: 5:00 p.m.

## NOTICE OF THE SPECIAL MEETING OF THE BOARD OF TRUSTEES

### *Agenda and Notes*

A. CALL TO ORDER, ROLL CALL, AND PLEDGE OF ALLEGIANCE

B. OPPORTUNITY FOR MEMBERS OF THE PUBLIC TO ADDRESS THE BOARD ON ANY ITEM DESCRIBED IN THIS NOTICE (GOVERNMENT CODE SECTION 54954.3) **Public Comment Form**

Opportunity for Members of the Public to address the Board on any item on the agenda. In the interest of time and order, presentations from the public are limited to four (4) minutes per person. An individual speaker's allotted time may not be increased by a donation of time from members of the public in attendance. If you wish to speak under Public Comment or Public Hearings, follow the directions for speaking to agenda items as listed above.

C. PRESENTATIONS

Principals will present to the Governing Board their site goals for the 2023-24 school year.

D. ADJOURNMENT

Respectfully Submitted,

Rhonda L. Taylor, Ed.D.  
Superintendent

# School Plan for Student Achievement

Dream Academy, 2023-2024

## NEEDS ANALYSIS

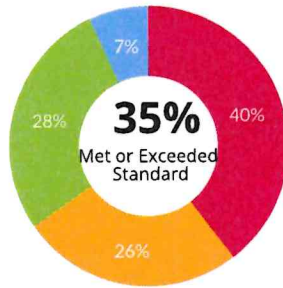
How did DREAM Academy's students perform on the 2022-2023 CAASPP and Summative ELPAC? (Preliminary data only)

English-Language Arts



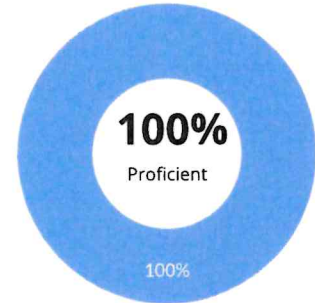
Level 1 (Standard Not Met) Level 2 (Standard Nearly Met)  
Level 3 (Standard Met) Level 4 (Standard Exceeded)

Mathematics



Level 1 (Standard Not Met) Level 2 (Standard Nearly Met)  
Level 3 (Standard Met) Level 4 (Standard Exceeded)

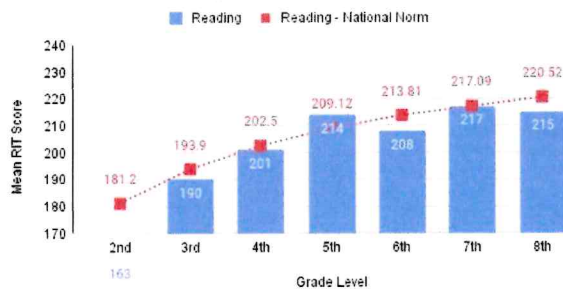
Summative ELPAC



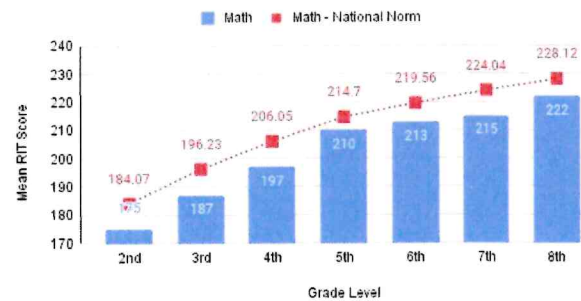
Level 4 (Well Developed)

How do Dream Academy's student achievement levels compare to other students across the nation? (Based on Winter 2023 MAP Data?)

Mean RIT Score Comparison: Reading (Winter 2023)



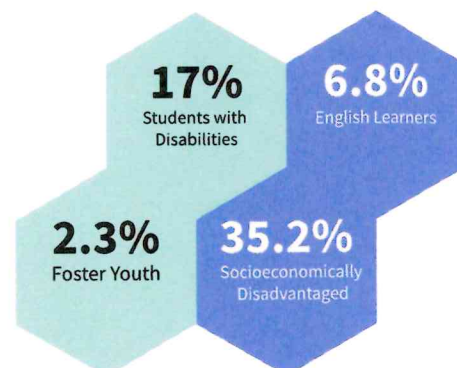
Mean RIT Score Comparison: Math (Winter 2023)



## Other Measures:

# 21.3%

**of Socioeconomically Disadvantaged students** were chronically absent based on the 2022 CA Dashboard results



# GOALS AND ACTIONS FOR 2023-2024

## ACADEMICS

Improve learning and academic performance for all students as measured by NWEA MAP.

- Classroom supplies for targeted intervention and enrichment
- Digital Platforms (Smarty Ants, Achieve 3000) as support and intervention
- Use of NWEA 3x/year to monitor student progress

Metric:

**100%**

## ACADEMICS: Special Education

Increase inclusivity of SPED students in the general education classroom.

- Differentiation and Tier 1 strategies
- Teacher collaboration

Metric:

**100%**

## SOCIAL-EMOTIONAL

DREAM Academy will increase students' social-emotional well-being by developing the knowledge, skills, and dispositions to foster healthy identities, establish and maintain meaningful relationships, and communicate effectively with other as measured by CHKS data and the SRSS.

- On/off campus enrichment activities
- Tom & Tabby Cat Social Skills SEL curriculum for morning Zoom (TK-2)

Metric:

**100%**

## STUDENT ENGAGEMENT/INNOVATION

Foster innovation within a Project Based Learning model to cultivate student engagement, critical thinking, and real world problem solving while providing a positive and safe environment that empowers all students to achieve their academic and personal growth potential.

- Lego Education
- PBL with a focus on science, agriculture and robotics
- Teachers engage in 2-way communication with families once per month to discuss student progress

Metric:

**100%**





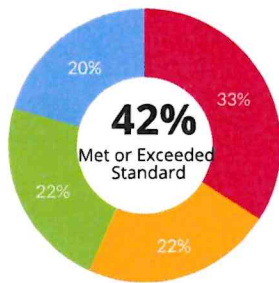
# School Plan for Student Achievement

Lakeside Farms Elementary, 2023-2024

## NEEDS ANALYSIS

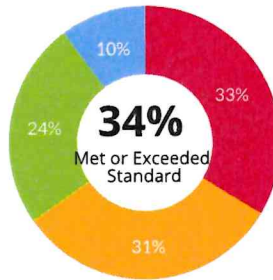
How did Lakeside Farms' students perform on the 2022-2023 CAASPP and Summative ELPAC? (Preliminary data only)

English-Language Arts



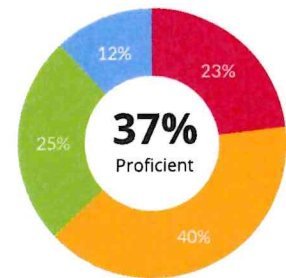
Level 1 (Standard Not Met)    Level 2 (Standard Nearly Met)  
Level 3 (Standard Met)    Level 4 (Standard Exceeded)

Mathematics



Level 1 (Standard Not Met)    Level 2 (Standard Nearly Met)  
Level 3 (Standard Met)    Level 4 (Standard Exceeded)

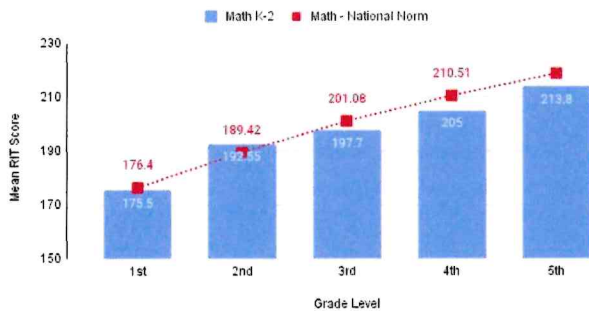
Summative ELPAC



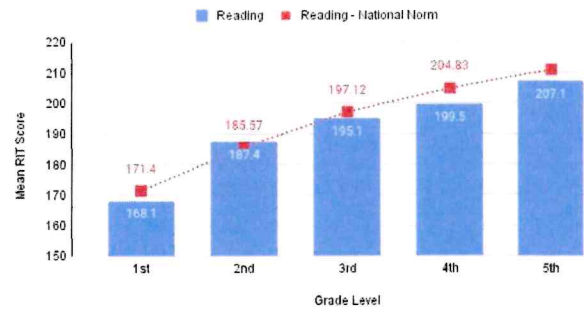
Level 1 (Minimally Developed)    Level 2 (Somewhat Developed)  
Level 3 (Moderately Developed)    Level 4 (Well Developed)

How do Lakeside Farms' student achievement levels compare to other students across the nation? (Based on Spring 2023 MAP Data)?

NWEA MAP Norm RIT Score Comparison - Math (Spring 2023)



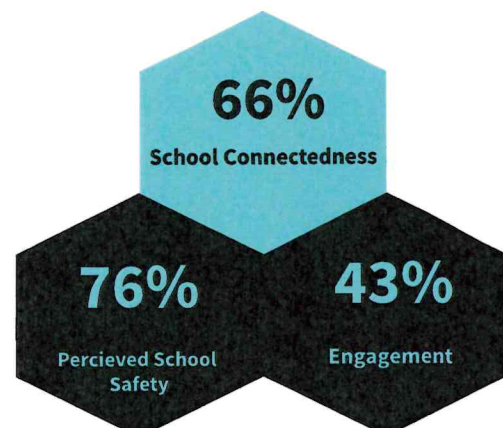
NWEA MAP Norm RIT Score Comparison - Reading (Spring 2023)



## Other Measures:

**23.7%**

**of English Learners**  
were chronically absent  
based on the 2022 CA  
Dashboard results



Source: California Healthy Kids Survey

# GOALS AND ACTIONS FOR 2023-2024

## ACADEMICS: MATH

By June 2024, all Learners will meet or exceed their targeted growth in MATH by 5% (specifically in mathematical reasoning), as measured by the NWEA MAP assessment.

- Number talks
- SAJ in general education setting
- Tier II Intervention
- Co-teaching training
- Imagine Learning

Metric:

**100%**

## INNOVATION AND ENGAGEMENT

Students will have the opportunity to explore Agriculture and Gardening throughout the school year.

- Sage Garden Project Grant

Metric:

**100%**

## SOCIAL-EMOTIONAL

By June of 2024, Lakeside Farms will have 90% of students feeling connected to school (a sense of belonging) as measured on the Healthy Kids Survey and additional school-wide surveys throughout the school year.

- Focus on caring deeply
- Learning environment improvements and modernization
- PBIS check-in lessons

Metric:

**90%**

## INNOVATION AND ENGAGEMENT

Student exposure to the Arts

- Utilizing Prop 28 funds

Metric:

**100%**

## ACADEMICS: ELA

By June 2024, all Learners will meet or exceed their targeted growth in ELA by 5% (specifically in reading comprehension), as measured by the NWEA MAP assessment.

- Focus on Reading comprehension
- Weekly instructional rounds
- Tier II Intervention
- Supplemental instruction
- Classroom environment to support differentiated instruction

Metric:

**100%**





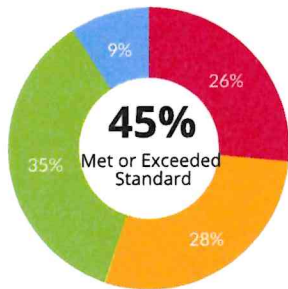
# School Plan for Student Achievement

Lakeside Middle School, 2023-2024

## NEEDS ANALYSIS

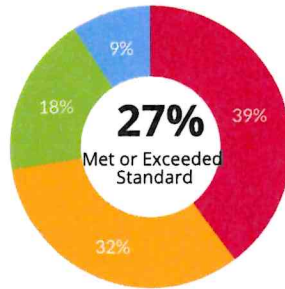
How did Lakeside Middle's students perform on the 2022-2023 CAASPP and Summative ELPAC? (Preliminary data only)

English-Language Arts



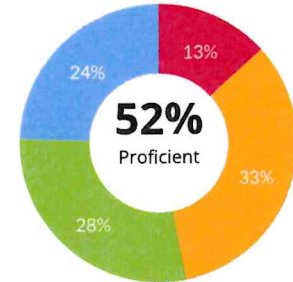
Level 1 (Standard Not Met)    Level 2 (Standard Nearly Met)  
Level 3 (Standard Met)    Level 4 (Standard Exceeded)

Mathematics



Level 1 (Standard Not Met)    Level 2 (Standard Nearly Met)  
Level 3 (Standard Met)    Level 4 (Standard Exceeded)

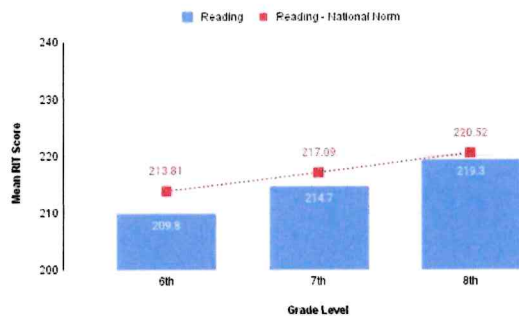
Summative ELPAC



Level 1 (Minimally Developed)    Level 2 (Somewhat Developed)  
Level 3 (Moderately Developed)    Level 4 (Well Developed)

How do Lakeside Middle's student achievement levels compare to other students across the nation? (Based on Winter 2023 MAP Data?)

Mean RIT Score Comparison: Reading (Winter 2023)



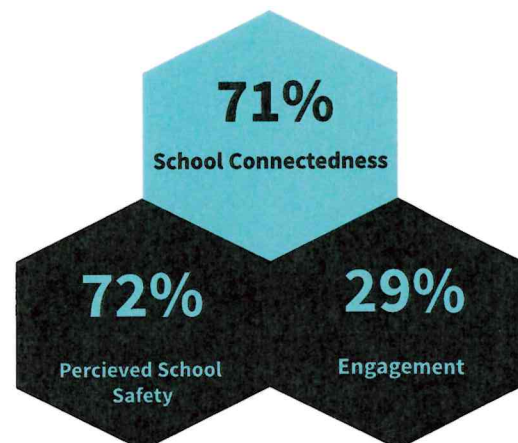
Mean RIT Score Comparison: Math (Winter 2023)



## Other Measures:

**24.2%**

**of Students with Disabilities** were chronically absent based on the 2022 CA Dashboard results



Source: California Healthy Kids Survey

# GOALS AND ACTIONS FOR 2023-2024

## ACADEMICS: ELA

Based on analysis of the spring 2023 MAPs results, eighty percent of students not demonstrating proficiency will show at least 10% improvement in reading comprehension of informational text, measured by RIT scores as evidenced through the 2023-2024 MAPs assessments.

- Curriculum Framework & Road Maps
- Use of assessments to monitor growth
- Support classes

Metric:



## SOCIAL-EMOTIONAL

Based on data from 2022 / 2023 California Healthy Kids survey, our school will increase in student empathetic behaviors, and in their "care deeply" score from the initial survey as measured by school contentedness on the survey. Currently 71 % of students rate positively and our goal is 81% by June 2024. Attendance rates will increase by 10% in 23/24 School year.

- CREW

Metric:



## PARENT ENGAGEMENT

Increase communication to parents and community by providing weekly e-mail communications, parent nights, title one meetings. Number of meetings will increase from 22/23 school year by 10% for 23/24 as measured by number of sign-in sheets.

- Parent Meetings
- Parent communication tools-planners

Metric:



## ACADEMICS: MATH

All students will show growth from Spring 2023 to Spring 2024 on the NWEA MAP tests.

- Common Assessments (3x/year)
- Support Classes
- CPM

Metric:



## STUDENT ENGAGEMENT/INNOVATION

Support goal 3 from LCAP and enrichment opportunities available to all students during the school day. LMS students will have opportunities to achieve participate in after school enrichment opportunities such as music, robotics, technology, dance, and drama. Project Lead the Way and agriculture Science classes will be available to any student during the school day. The number of participants will increase by 10% from 22/23 to 23/24 as measured by course enrollment.

- Before/After school Enrichment
- Project Lead the Way
- Academic interventions
- Instructional Strategies
- Immersion programs
- Counseling support

Metric:





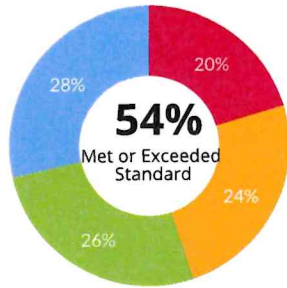
# School Plan for Student Achievement

Lakeview Elementary; 2023-2024

## NEEDS ANALYSIS

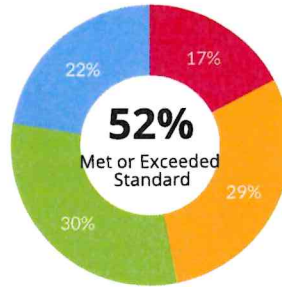
How did Lakeview's students perform on the 2022-2023 CAASPP and Summative ELPAC? (Preliminary data only)

English-Language Arts



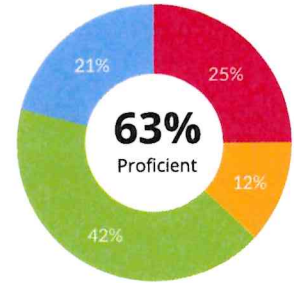
Level 1 (Standard Not Met)    Level 2 (Standard Nearly Met)  
Level 3 (Standard Met)    Level 4 (Standard Exceeded)

Mathematics



Level 1 (Standard Not Met)    Level 2 (Standard Nearly Met)  
Level 3 (Standard Met)    Level 4 (Standard Exceeded)

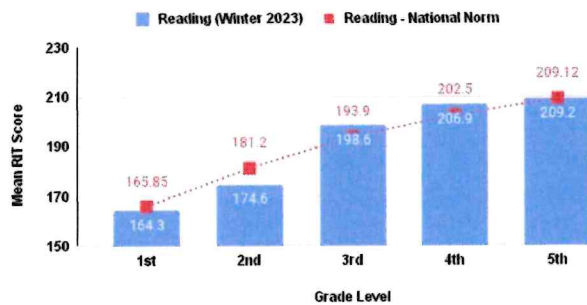
Summative ELPAC



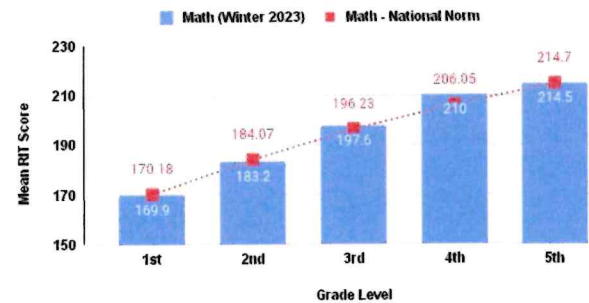
Level 1 (Minimally Developed)    Level 2 (Somewhat Developed)  
Level 3 (Moderately Developed)    Level 4 (Well Developed)

How do Lakeview's student achievement levels compare to other students across the nation? (Based on Winter 2023 MAP Data?)

Mean RIT Score Comparison: Reading (Winter 2023)



Mean RIT Score Comparison: Math (Winter 2023)

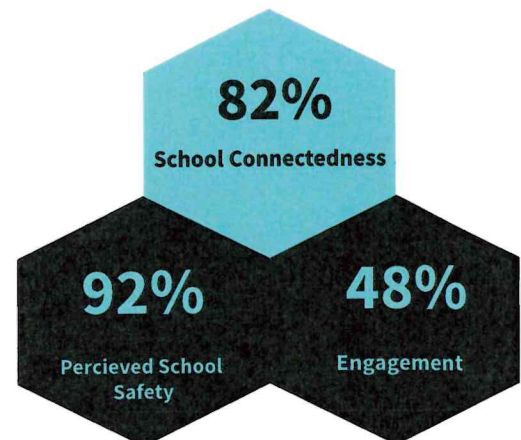


## Other Measures:

**46.7%**

of English Learners

were chronically absent based on the 2022 CA Dashboard results





# GOALS AND ACTIONS FOR 2023-2024

## ACADEMICS: ELA

By June 2024, every student will make significant growth in one (or more) of the following areas (grade-level dependent):

- number of sight-words or CVC words read
- fluency
- lexile score
- Achieve level set score
- MAPs score
- CAASPP score

Metric:

**100%**

## SOCIAL-EMOTIONAL

By June 2024, Lakeview will:

- Increase School Connectedness from 82% to 85% as measured by CHKS
- Increase Building Relationships from 76% to 81% as measured by CHKS
- Decrease chronic absenteeism from 24.4% to 20% (and from 46.7% to 40% for ELs) as measured by attendance.

## ACADEMICS: MATH

By June 2024, all students (K-5) will increase their ability to communicate mathematical reasoning by one band on a site developed assessment rubric.

- A&C release time
- Classroom materials for supporting instructional program for students
- CGI curriculum
- NWEA MAP 3x/year
- PLC
- Imagine Math

Metric:

**100%**



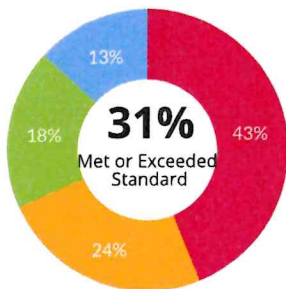
# School Plan for Student Achievement

Lemon Crest Elementary, 2023-2024

## NEEDS ANALYSIS

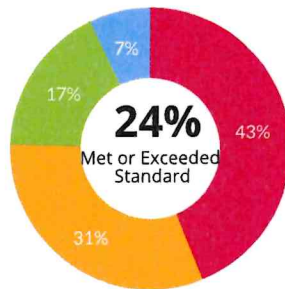
How did Lemon Crest's students perform on the 2022-2023 CAASPP and Summative ELPAC? (Preliminary data only)

English-Language Arts



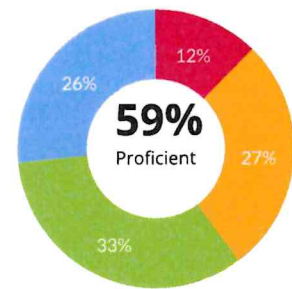
Level 1 (Standard Not Met)    Level 2 (Standard Nearly Met)  
Level 3 (Standard Met)    Level 4 (Standard Exceeded)

Mathematics



Level 1 (Standard Not Met)    Level 2 (Standard Nearly Met)  
Level 3 (Standard Met)    Level 4 (Standard Exceeded)

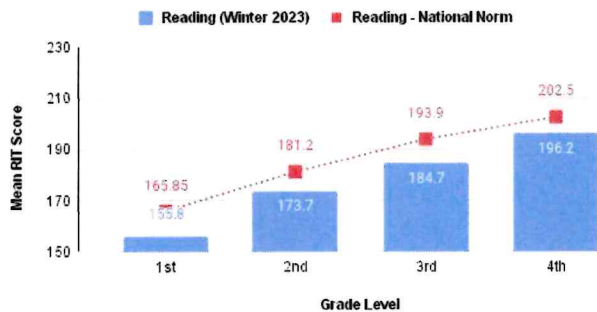
Summative ELPAC



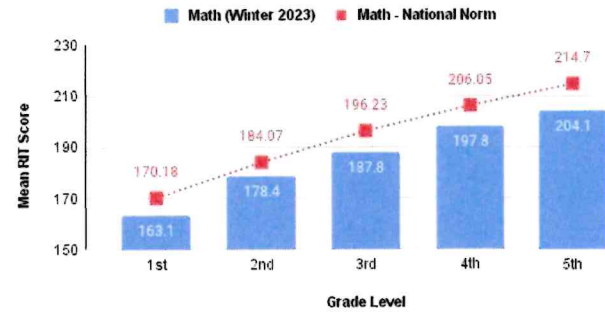
Level 1 (Minimally Developed)    Level 2 (Somewhat Developed)  
Level 3 (Moderately Developed)    Level 4 (Well Developed)

How do Lemon Crest's student achievement levels compare to other students across the nation? (Based on 2023 MAP Data)

Mean RIT Score Comparison: Reading (Winter 2023)

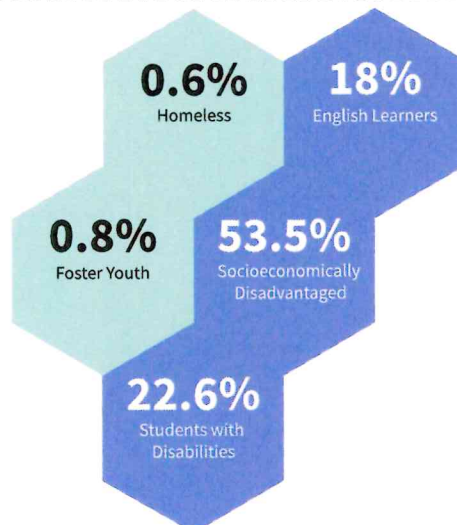


Mean RIT Score Comparison: Math (Winter 2023)



## Other Measures:

**20.4%**  
of Students with Disabilities were chronically absent based on the 2022 CA Dashboard results



- 72% School Connectedness
- 70% Perceived School Safety
- 45% Engagement

Source: California Healthy Kids Survey

Source: 2022 California Dashboard



# GOALS AND ACTIONS FOR 2023-2024

## ACADEMICS

By June 2024, with an implementation of Multi-tiered System of Support (MTSS) which uses common and reliable data to provide academic and social emotional instruction that is culturally responsive, strength-based, and differentiated to meet the learning needs of all students. All students at Lemon Crest Elementary School will make academic growth in order to reach mastery of grade level standards and Individual goals.

- K-5 DIBELS assessments
- K-5th grade NWEA MAP Reading Assessment
- 3rd-5th grade CAASPP English-Language Arts
- Imagine Learning and Achieve 3000
- Expeditionary Learning Curriculum

Metric:

**100%**

## ATTENDANCE

By June of 2024, Lemon Crest will reduce the number of students who are chronically absent from 13.5% to less than 8%, and increase the overall positive Average Daily Attendance Rate to 97%.

- Tiered supports/interventions
- Student recognition
- Attendance team outreach & support
- Junior Olympics and Saturday School

Metric:

**100%**

## SOCIAL-EMOTIONAL

By June 2024, with an implementation of Multi-Tiered System of Support (MTSS) which uses common and reliable data to provide academic and social emotional instruction that is culturally responsive, strength-based, and differentiated to meet the learning needs of all students, Lemon Crest Elementary School will show an increase in sense of student belonging and sense of student safety. This will be evidenced by metrics on the California Healthy Kids Survey, and local measures including the You Belong Survey, a decrease in suspensions and office referrals, and a significant increase in positive office referrals.

- Tiered supports/interventions
- Student recognition
- Peaceful Playgrounds
- Responsive Classroom
- Teaching Children to Care
- Student Leadership activities
- Classified instructional aides

Metric:

**100%**



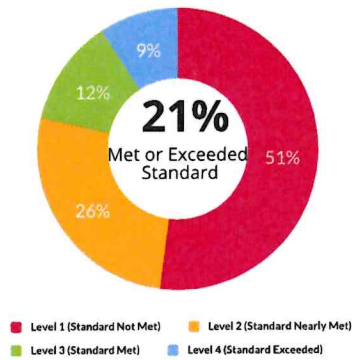
# School Plan for Student Achievement

Lindo Park Elementary, 2023-2024

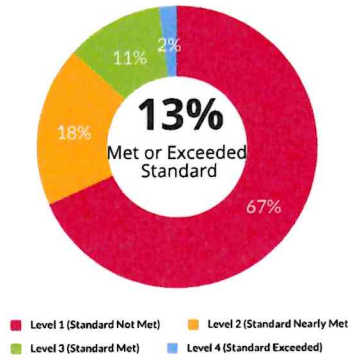
## NEEDS ANALYSIS

How did Lindo Park's students perform on the 2022-2023 CAASPP and Summative ELPAC? (Preliminary data only)

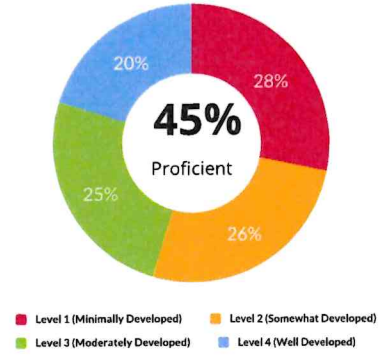
English-Language Arts



Mathematics



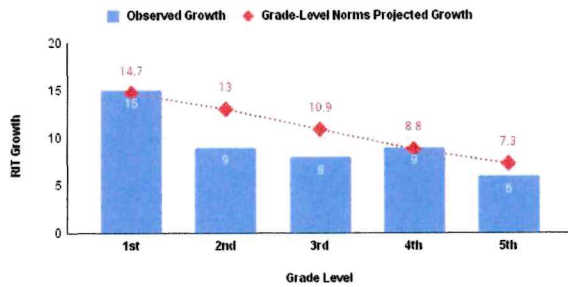
Summative ELPAC



How much RIT growth did Lindo Park's students exhibit during the 22-23 school year?

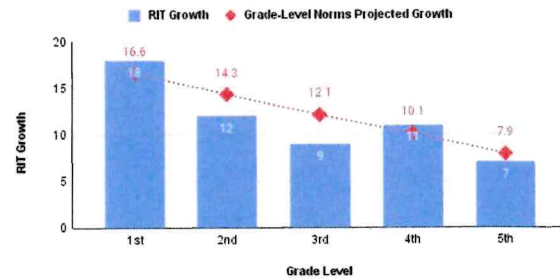
NWEA MAP Reading - RIT Growth

Fall 2022 - Spring 2023



NWEA MAP Math - RIT Growth

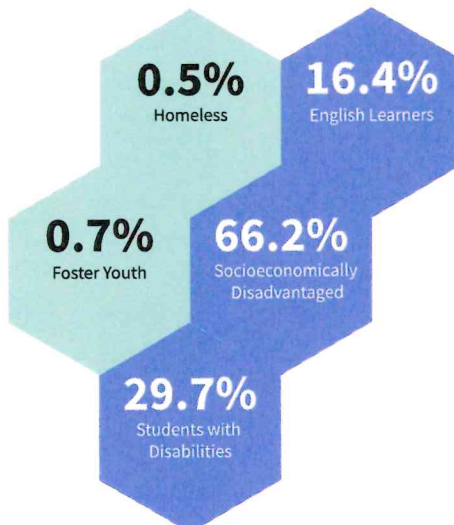
Fall 2022 - Spring 2023



## Other Measures:

- 62% School Connectedness
- 56% Perceived School Safety
- 48% Engagement

Source: California Healthy Kids Survey



Source: 2022 California Dashboard

**43.3%**

of Students with Disabilities were chronically absent based on the 2022 CA Dashboard results



# GOALS AND ACTIONS FOR 2023-2024

## ACADEMICS: ELA

By June 2024, every students will meet or exceed expected growth target in ELA across the Reading strand as measured by NWEA MAPs.

- Focus on Reading Comprehension
- Achieve 3000
- Imagine Learning
- PD in EL strategies/interventions
- Intervention Teacher
- SIPPS

Metric:

100%

## SOCIAL-EMOTIONAL

Develop a baseline through a consistent and clear discipline referral system and structure in the classroom and on the playground to promote positive interactions at Lindo Park Elementary.

- PBIS
- Growth Mindset
- Structure and routines
- Behavior assemblies
- WINN & Intervention Supports

Metric:

100%

## ACADEMICS: MATH

By June 2024, every student will meet or exceed expected growth target in MATH as measured by NWEA MAP.

- Reflex Math
- Math Rotations & Exit Tickets
- Intervention Teacher (Grades 3-5)
- EDM & Interim assessment data

Metric:

100%

## PARENT ENGAGEMENT

Connect school and home parent involvement/Decrease chronic absenteeism

- Mass communication systems, social media outreach/communication, and marketing strategies
- Increase parent participation on campus
- Parent information nights

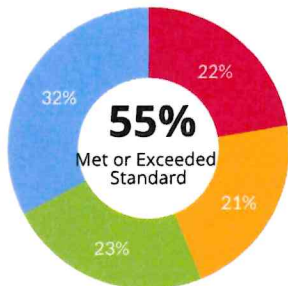
# School Plan for Student Achievement

Riverview International Academy, 2023-2024

## NEEDS ANALYSIS

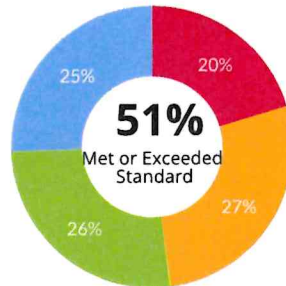
How did Riverview's students perform on the 2022-2023 CAASPP and Summative ELPAC? (Preliminary data only)

English-Language Arts



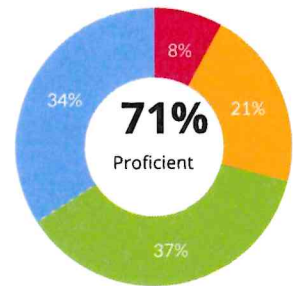
Level 1 (Standard Not Met)    Level 2 (Standard Nearly Met)  
Level 3 (Standard Met)    Level 4 (Standard Exceeded)

Mathematics



Level 1 (Standard Not Met)    Level 2 (Standard Nearly Met)  
Level 3 (Standard Met)    Level 4 (Standard Exceeded)

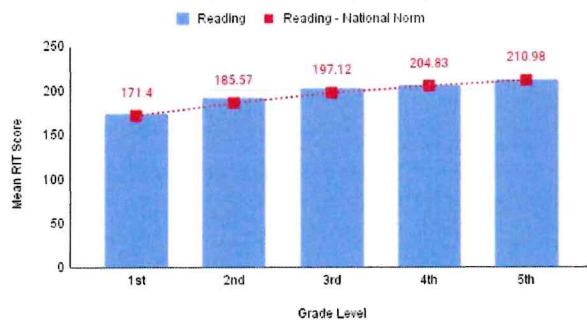
Summative ELPAC



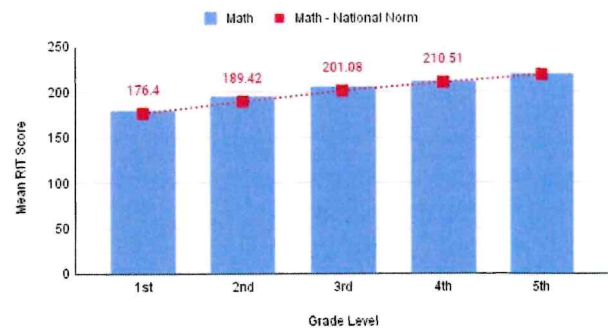
Level 1 (Minimally Developed)    Level 2 (Somewhat Developed)  
Level 3 (Moderately Developed)    Level 4 (Well Developed)

How do Riverview's student achievement levels compare to other students across the nation? (Based on Spring 2023 MAP Data)

Mean RIT Score Comparison: Reading (Spring 2023)

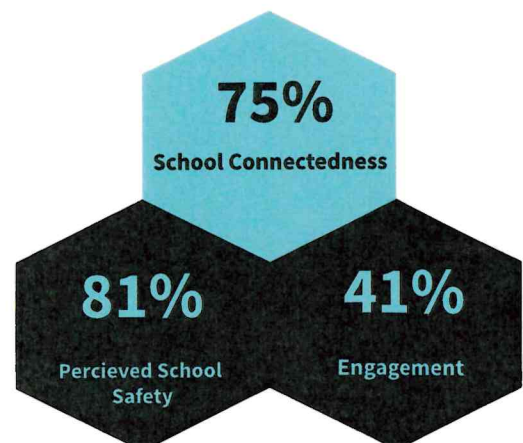


Mean RIT Score Comparison: Math (Spring 2023)



### Other Measures:

- 4.7% English Learners
- 22.2% Socioeconomically Disadvantaged
- 6.2% Students with Disabilities



Source: California Healthy Kids Survey



# GOALS AND ACTIONS FOR 2023-2024

## ACADEMICS: ELA

By Spring 2024, 60% of RIA students, including Students with Disabilities (SWD), Socio-Economically Disadvantaged (SED), and English Learner (EL) student populations, will meet or exceed ELA standards.

- Clarity for Learning
- Student Engagement through Student Talk
- Tier 1 Universal Access Learning
- Grade-level intervention support
- Data-driven PLCs & KidWatch process
- Integrated and Designated ELD

Metric:

Over 60%

## SOCIAL-EMOTIONAL

By Spring 2024, 92% of RIA students will be "Low Risk" in SEL, including external and internal behaviors, based on the Spring 2023 SRSS report (Low-Moderate-High). **Currently, 90% of RIA students are at Low Risk.**

- Tiered counseling support
- Morning Meetings
- School-wide PBIS

Metric:

Over 92%

## LANGUAGE IMMERSION

By Spring 2024, 70% of 5th-grade students will meet California's grade-level target language proficiency across three communication modes as assessed by district-approved assessment.

- Language Proficiency Can-Do Statements
- Morning meetings in target languages

Metric:

70%

## ACADEMICS: MATH

By Spring 2024, 60% of RIA students, including Students with Disabilities (SWD), Socio-Economically Disadvantaged (SED), and English Learner (EL) student populations, will meet or exceed Math standards

- Clarity for Learning
- Student Engagement through Student Talk
- Tier 1 Universal Access Learning
- Grade-level intervention support
- Data-driven PLCs & KidWatch process

Metric:

Over 60%

## INNOVATION & ENGAGEMENT

By Spring 2024, 100% of RIA students will actively engage in one or more enrichment opportunities offered at Riverview International Academy

- 3rd Language Enrichment Program
- Student leadership opportunities
- TK-5 Cultural music lessons
- School and community multicultural events
- STEAM challenges and lessons

Metric:

100%



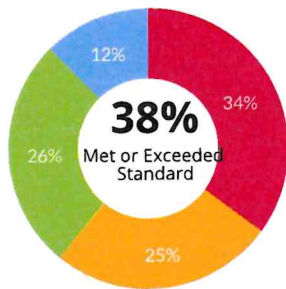
# School Plan for Student Achievement

Tierra del Sol Middle School, 2023-2024

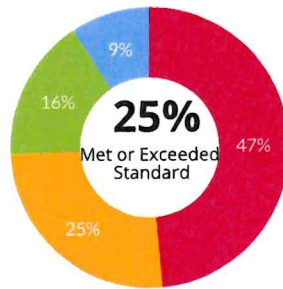
## NEEDS ANALYSIS

How did Tierra del Sol's students perform on the 2022-2023 CAASPP? (Preliminary data only)

English-Language Arts

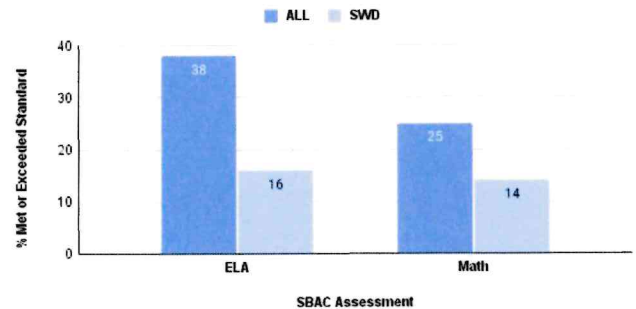


Mathematics



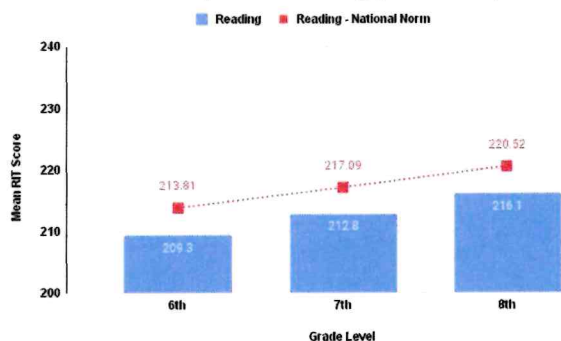
22-23 CAASPP - ELA and Math

All students vs. SWD

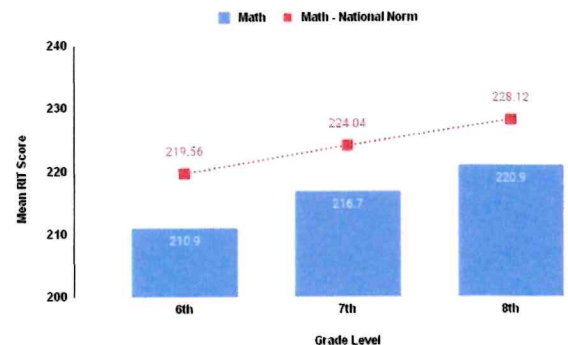


How do Tierra del Sol Middle's student achievement levels compare to other students across the nation? (Based on Winter 2023 MAP Data)

Mean RIT Score Comparison: Reading (Winter 2023)



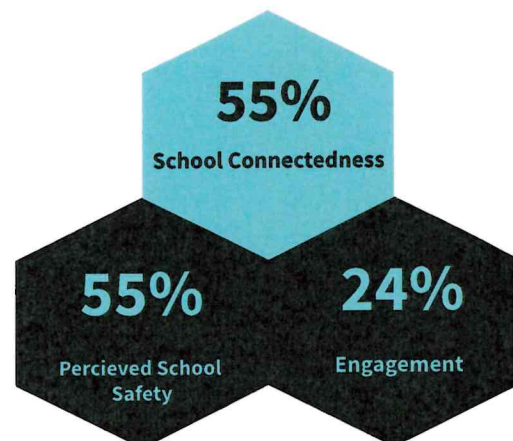
Mean RIT Score Comparison: Math (Winter 2022)



## Other Measures:

**28.5%**

of Students with Disabilities were chronically absent based on the 2022 CA Dashboard results





# GOALS AND ACTIONS FOR 2023-2024

## ACADEMICS: ELA & Math

Meaningful Assessments that Drive Meaningful Instruction:

- 1a. By June 2024, 60% will meet their expected growth target, as measured by MAPS and CAASPP assessment data. The Proficiency rate of SPED students will increase by 20%, compared to Spring 2023 results.
- 1b. Every student will have at least three data points in English and Math for teachers to analyze each trimester.
- 1c. By the end of each trimester, all teachers will analyze data and discuss three specific strategies for general education, ELD, and SPED students to implement to improve classroom instruction.

Metric:



## SOCIAL-EMOTIONAL GROWTH

By June 2024, 90% students will demonstrate proficiency in the LUSD Profile characteristic, "Persevering Relentlessly" and "Caring Deeply", as evident by LUSD Profile Success Criteria Rubrics, CORE SEL screener, and CREW performance assessment results.

Metric:



## PARENT ENGAGEMENT

Provide parents opportunities to acquire necessary information, knowledge, and skills to support their children's education at home and at school.

- Parent evening and day events that spotlight special talents and groups
- Jupiter grades

## ATTENDANCE

TDS will increase the excellent and satisfactory attendance percentage rate by 7% by June 2024.

- Increase parent communication through social media, KTDS, email, and parent/school opportunities
- Increase ASB activities
- Incentives for students

Metric:



## INNOVATION AND STUDENT WELL-BEING

75% TDS student will participate in at least one project that is connected to a cross-curricular unit or culminating task that combines proficiency in standards, UDL, STEAM, and Design Thinking by May 2024.

Metric:

