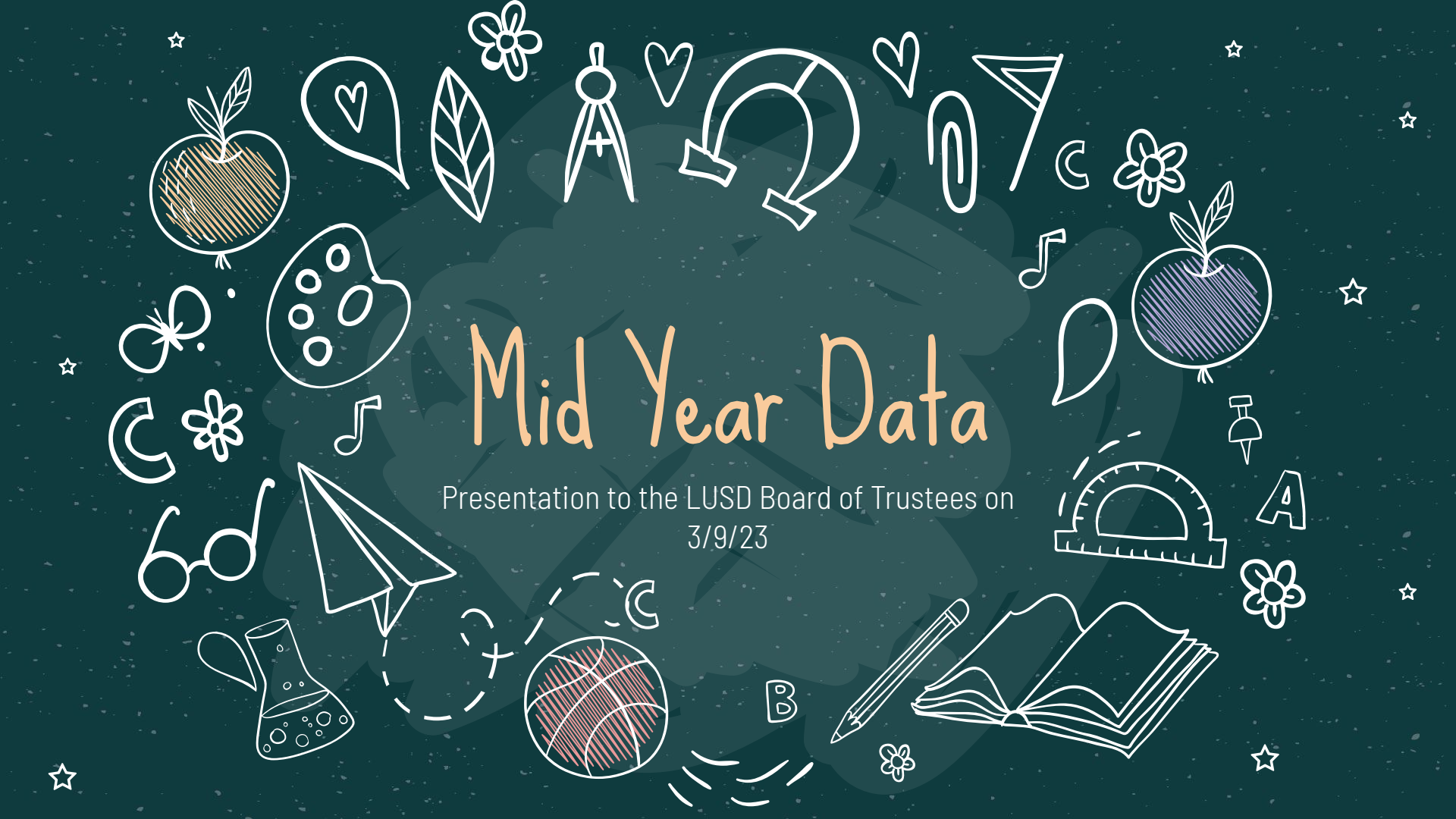


Mid Year Data

Presentation to the LUSD Board of Trustees on
3/9/23





01

Year to Year MAP Data

How are we doing compared to national norms?



03

CA Healthy Kids Survey Data

How are our teachers feeling about students and social/emotional/behavioral risk factors?



02

Fall to Winter MAP Data

What growth are we seeing amongst our current students?



04

Student Support Data

What are we doing to meet the S/E/B needs of our students?





OUR MTSS SYSTEMS
ARE DESIGNED TO
ADDRESS THE
NEEDS OF ALL
STUDENTS IN OUR
SYSTEM



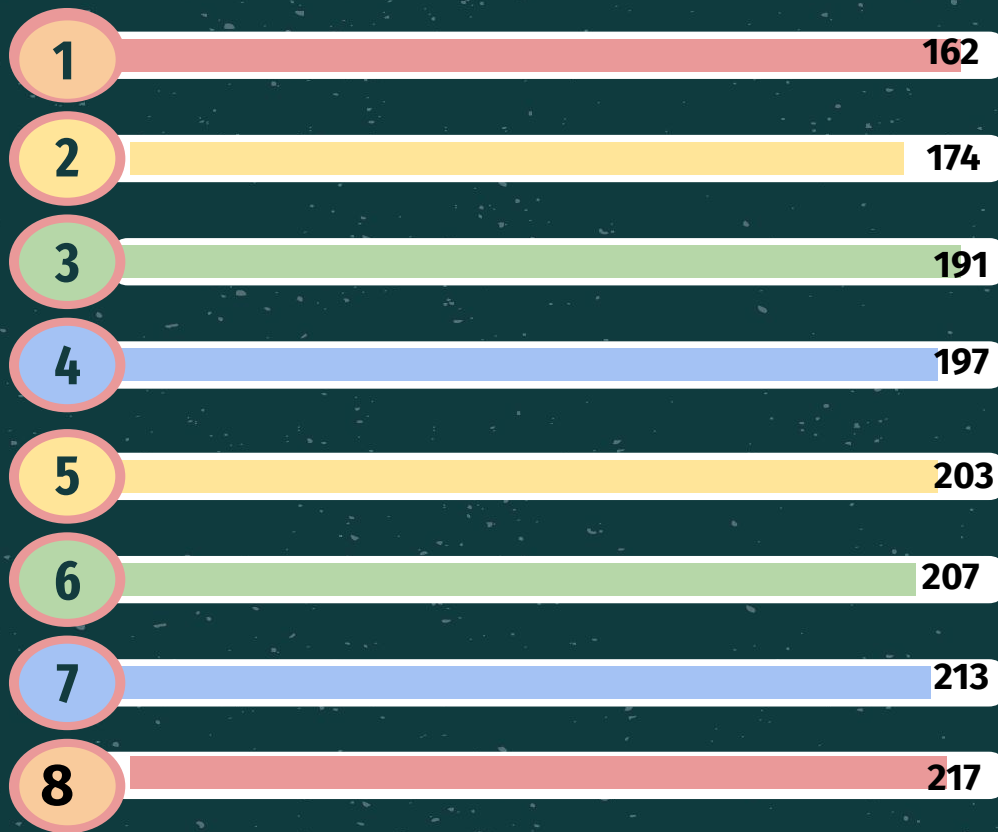


01. Mid Year MAP Data

How are our students doing compared to
students nationwide? Compared to last year?

Winter MAP Data: Reading

Winter, 2023 Mean RIT Scores



Goal: Winter National Norms



Winter MAP Data: Math

Winter, 2023 Mean RIT Scores



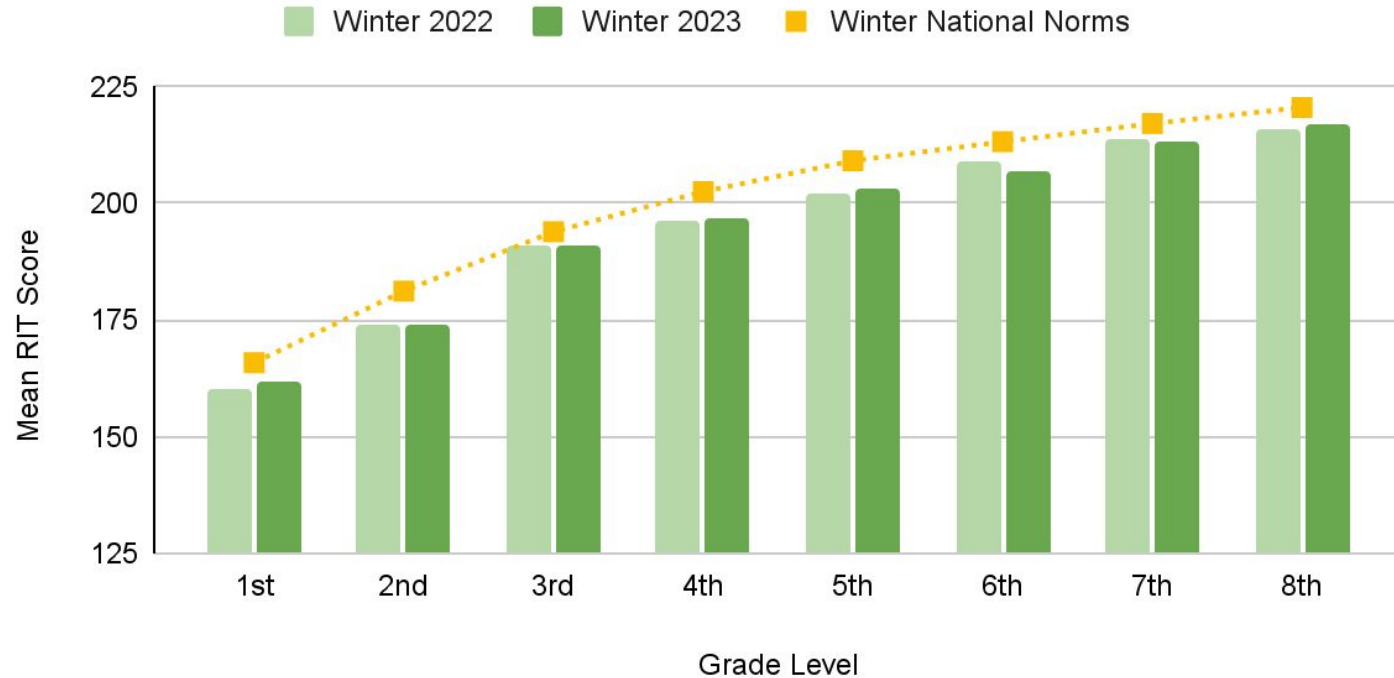
Goal: Winter National Norms



Reading: Winter 2022- Winter 2023

Reading: Mean RIT Score Norm Comparison (All)

All Students

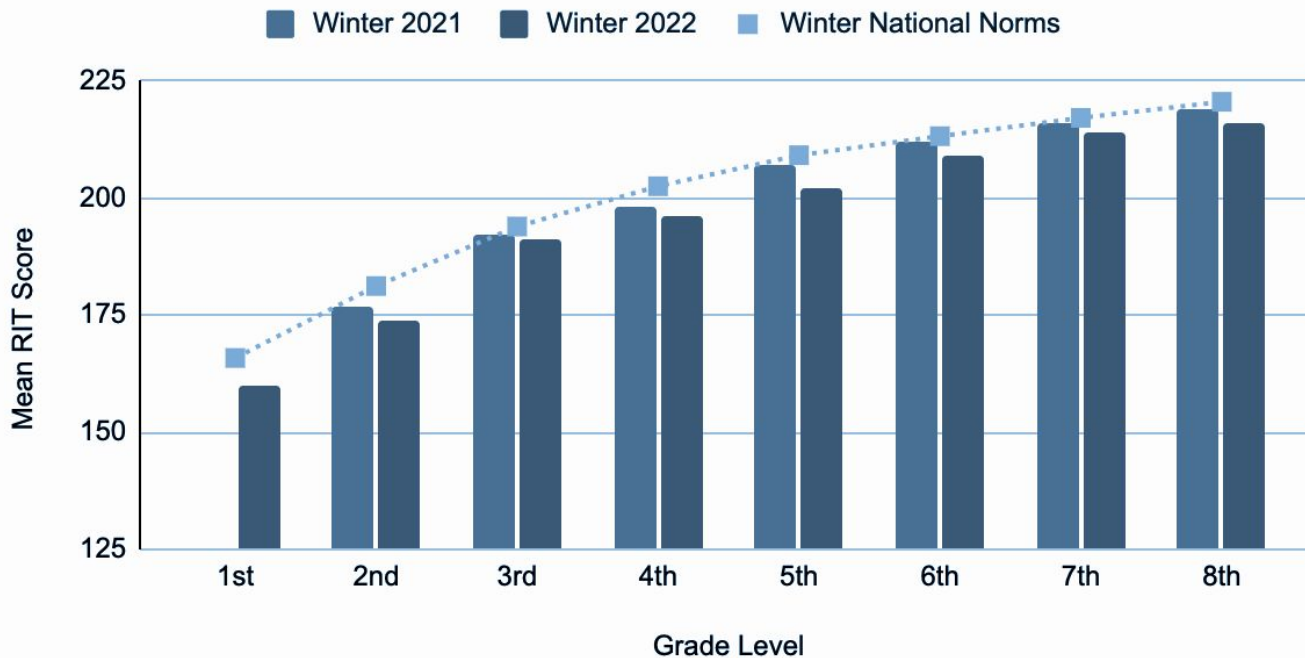




Reading: Winter 2021- Winter 2022

Reading: Mean RIT Score Norm Comparison (All)

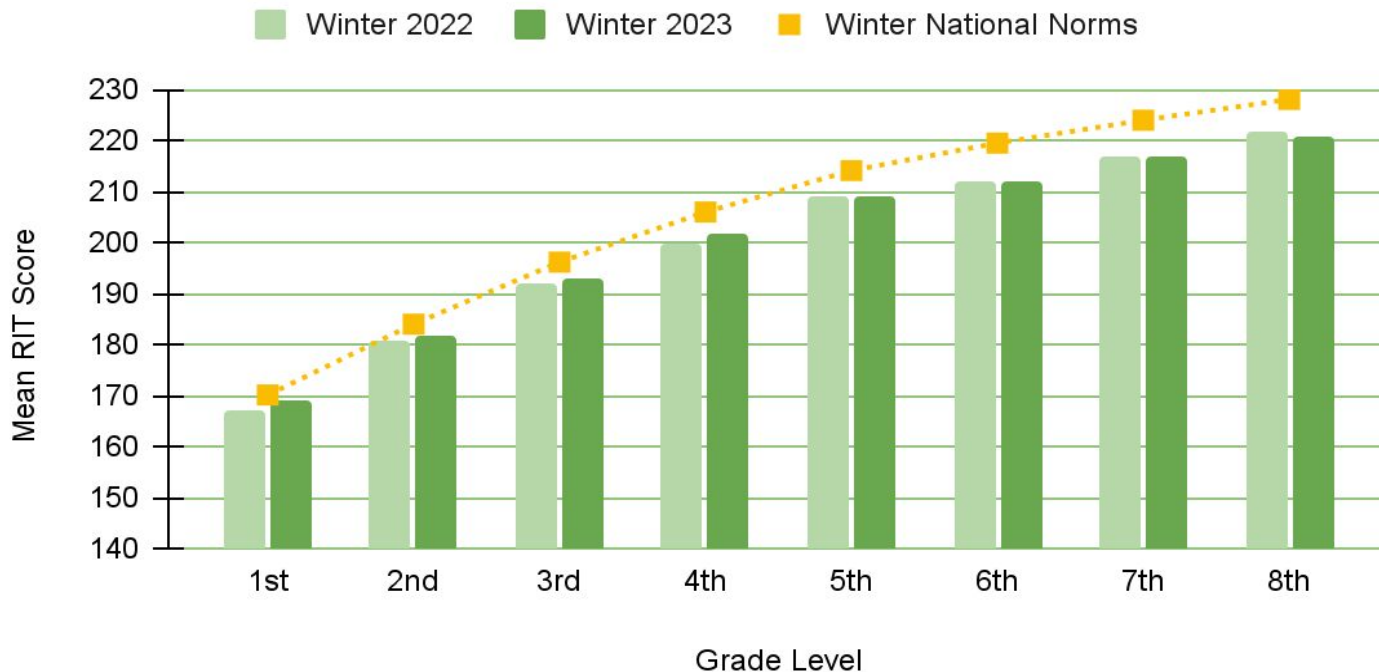
All Students



Math: Winter 2022- Winter 2023

Math: Mean RIT Score Norm Comparison (All)

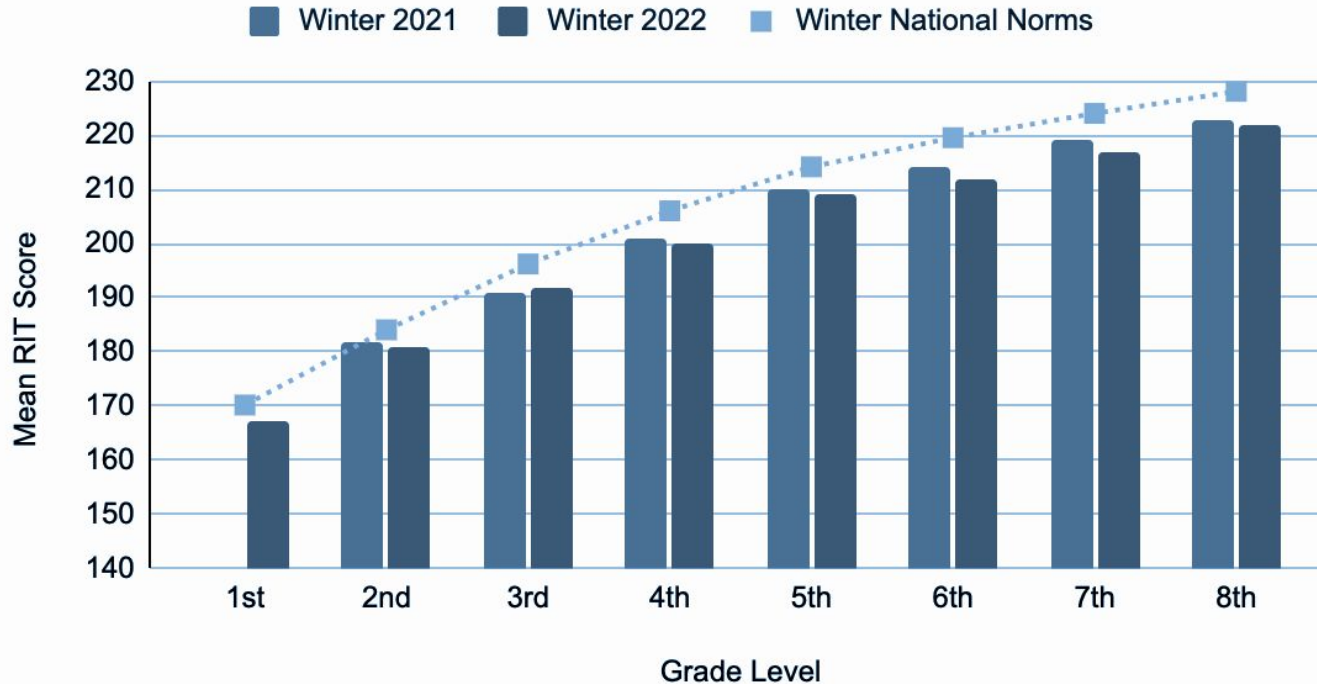
All Students



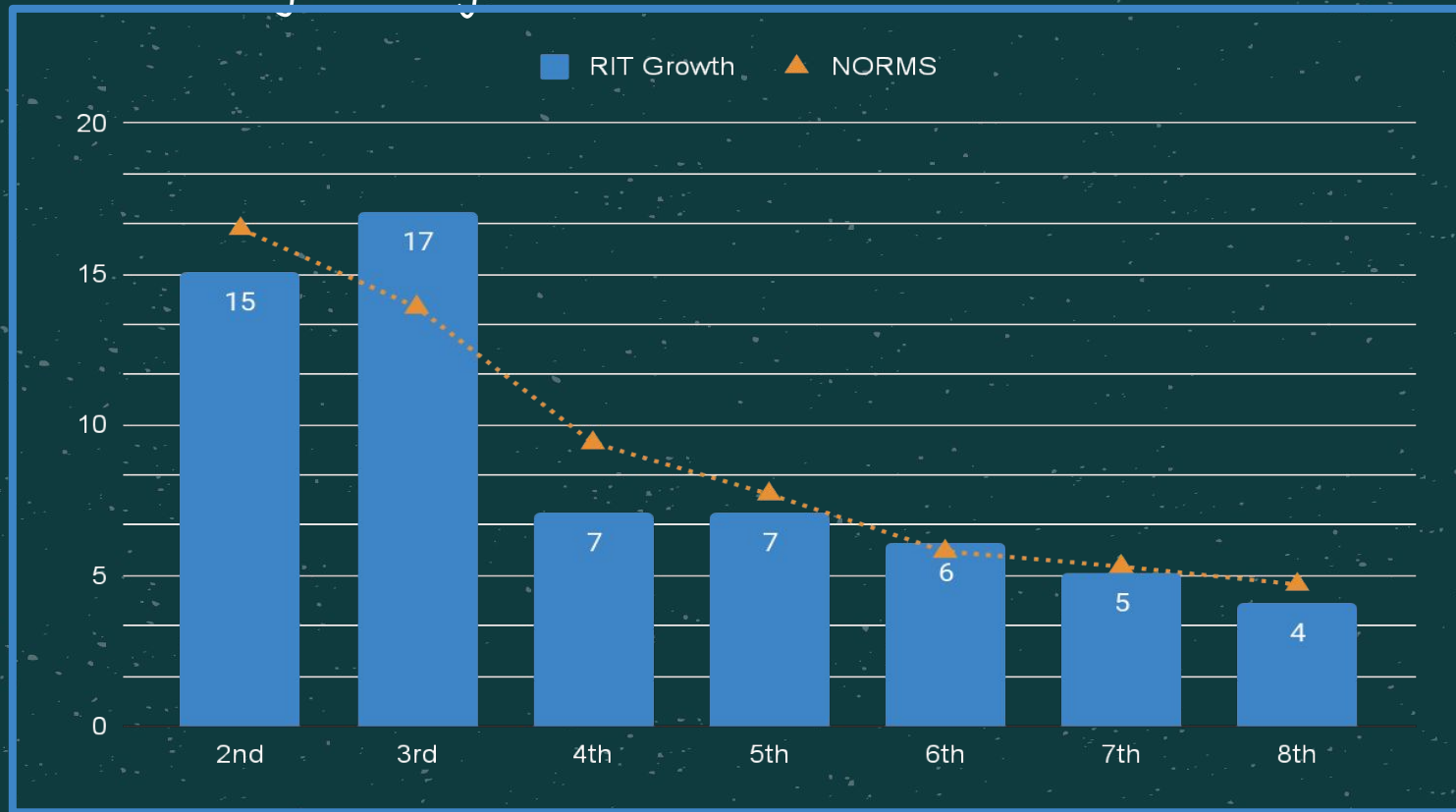
Math: Winter 2021- Winter 2022

Math: Mean RIT Score Norm Comparison (All)

All Students

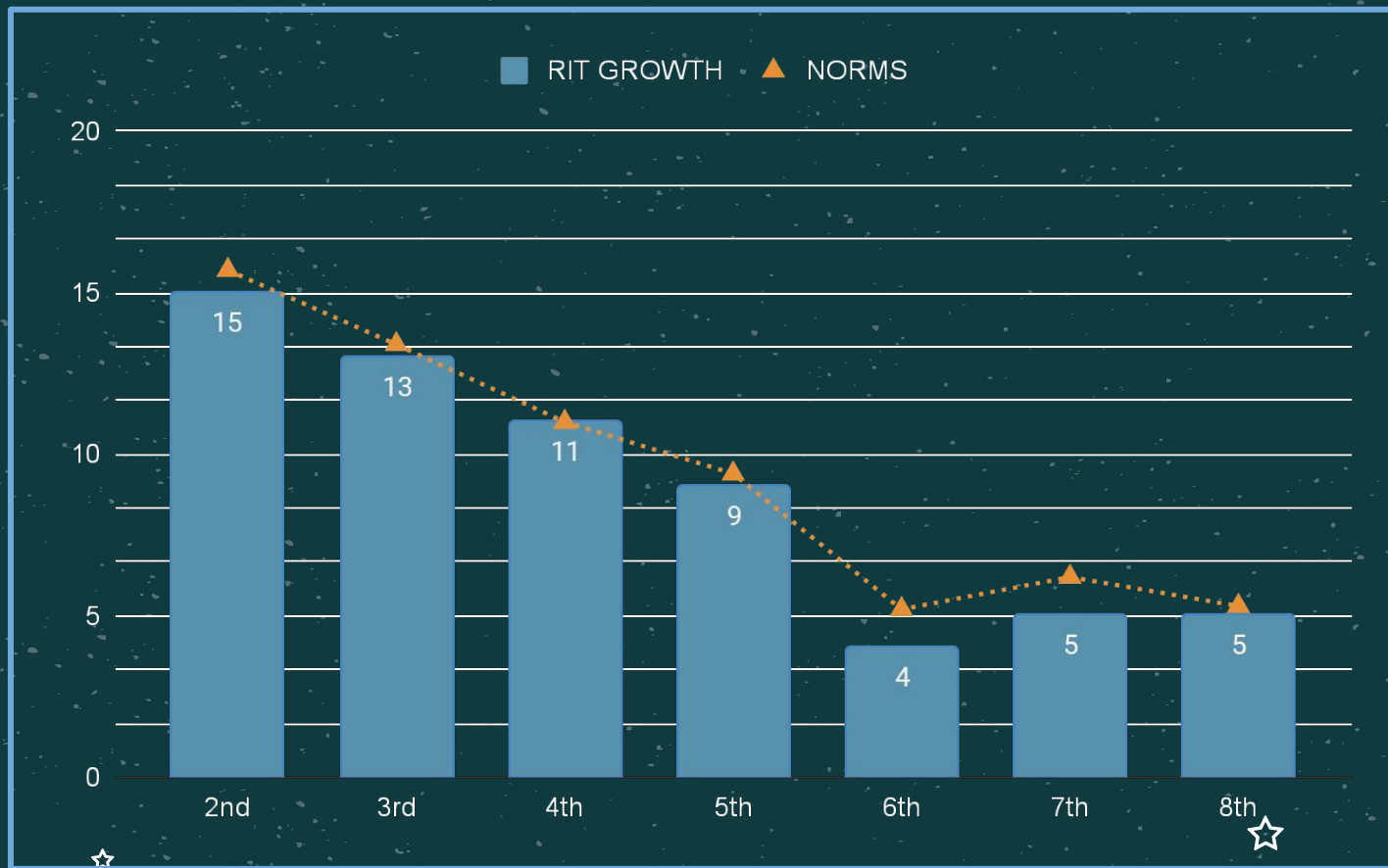


Reading Growth by Grade Level Cohort - Winter to Winter





Math Growth by Grade Level Cohort - Winter to Winter



How are we working to mitigate learning loss and increase student achievement?



Imagine Learning Suite

All students have access to our individualized intervention/enrichment Program



WINN Time

Some sites are regrouping students during the school day for Intervention



Intervention Teachers

At every LUSD school, LP and LC have an additional .5

How are we working to mitigate learning loss and increase student achievement?



Summer Academy/Extended School Year

We will offer Summer learning opportunities to more students



MTSS TOSAs

Our TOSAs are working alongside our leaders and teachers to build systems of support



KIDWATCH

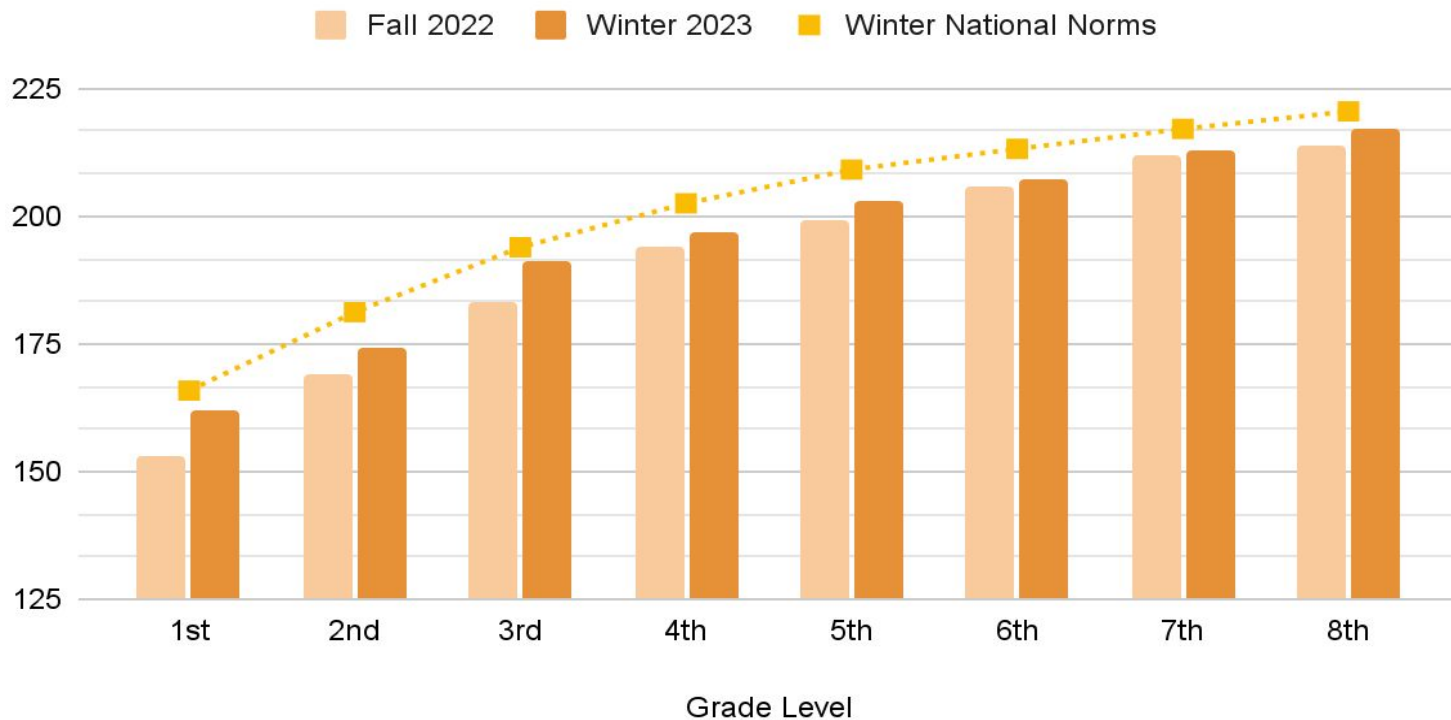
Principals and teachers engaging regularly with multiple data sources to determine student needs



02. Mid Year MAP Data

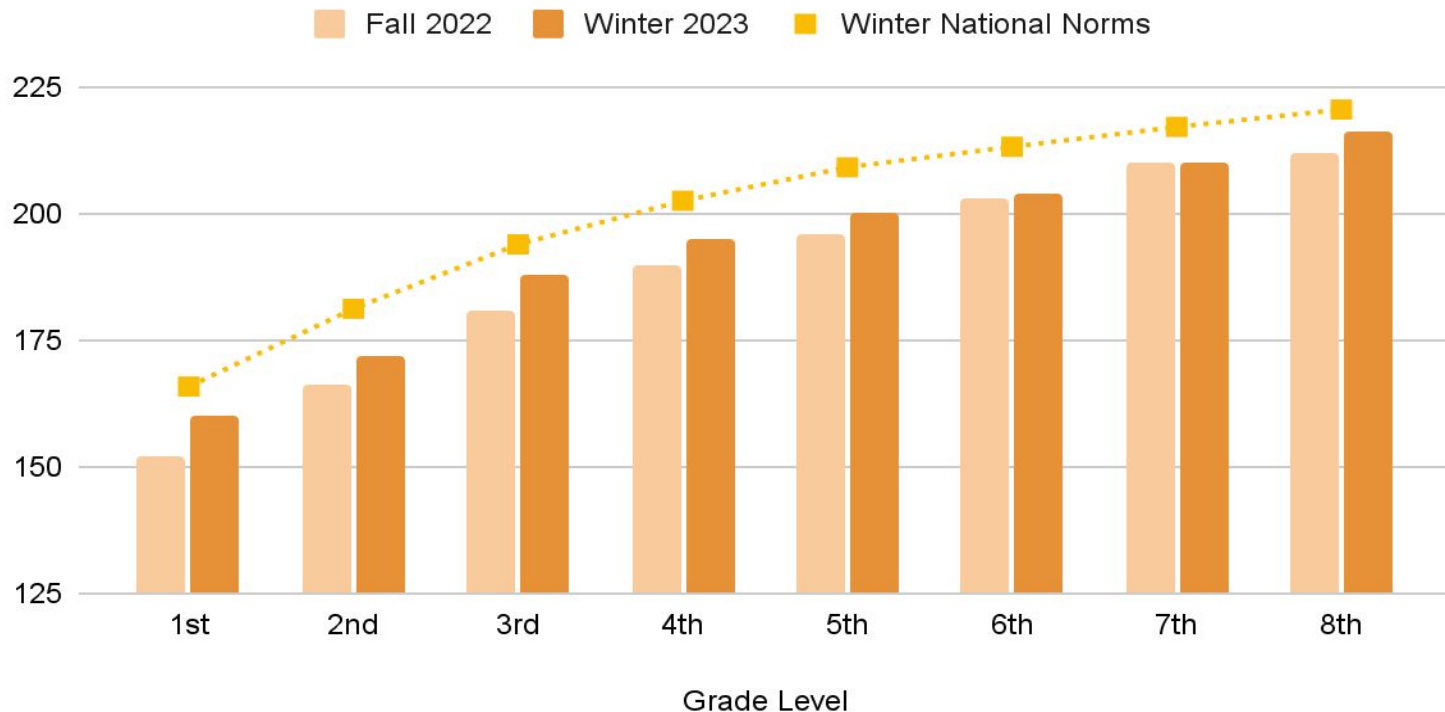
Are our students showing growth from fall to winter?

Reading: Fall to Winter, all Students



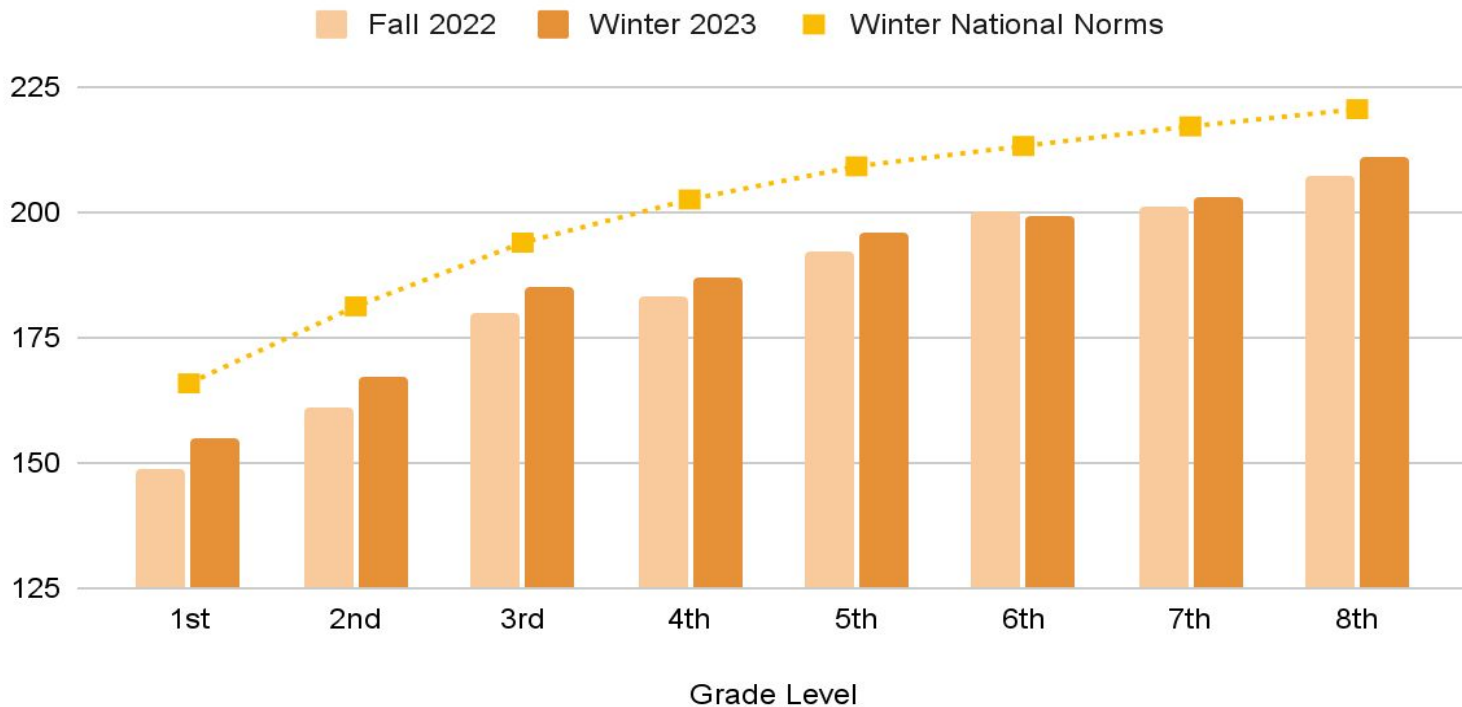
All Students

Reading: Fall to Winter, Socioeconomically Disadvantaged



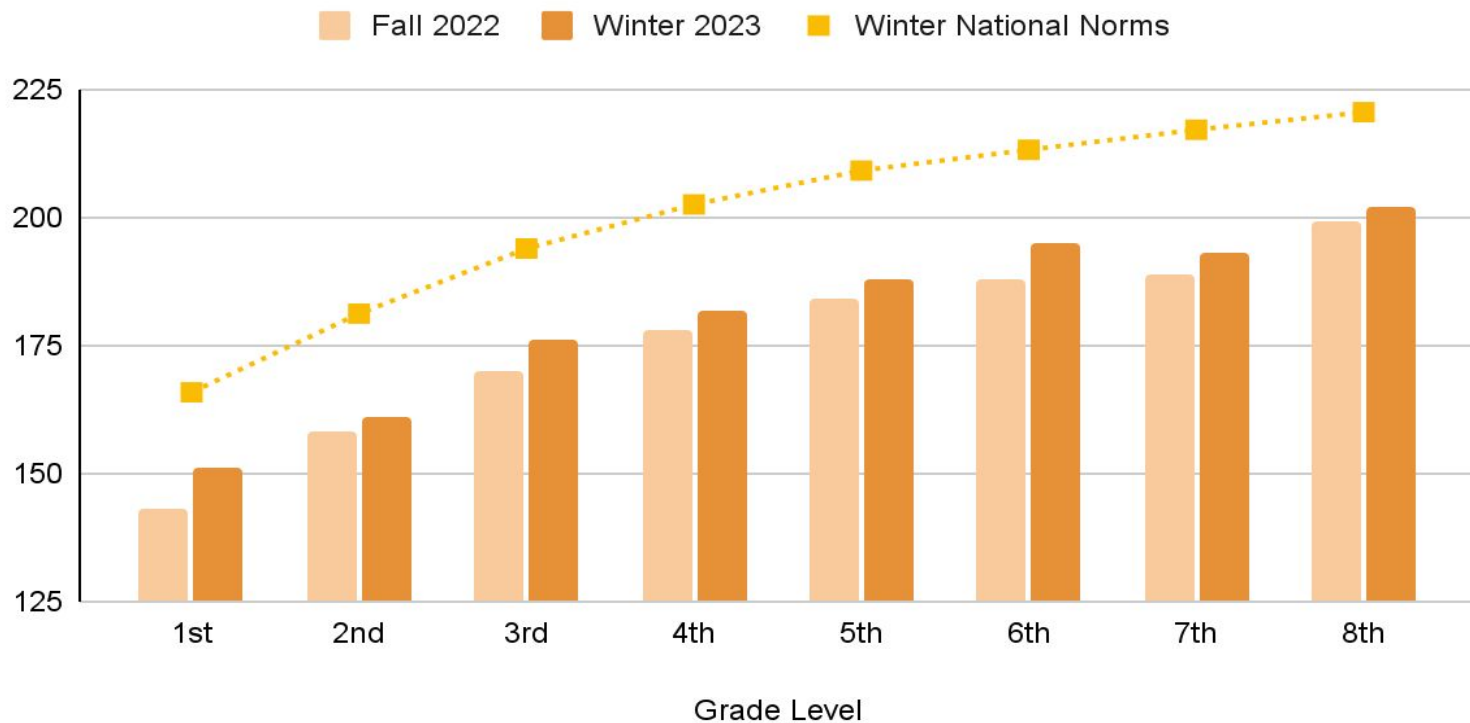
Students who are Socioeconomically Disadvantaged

Reading: Fall to Winter, Student with Disabilities



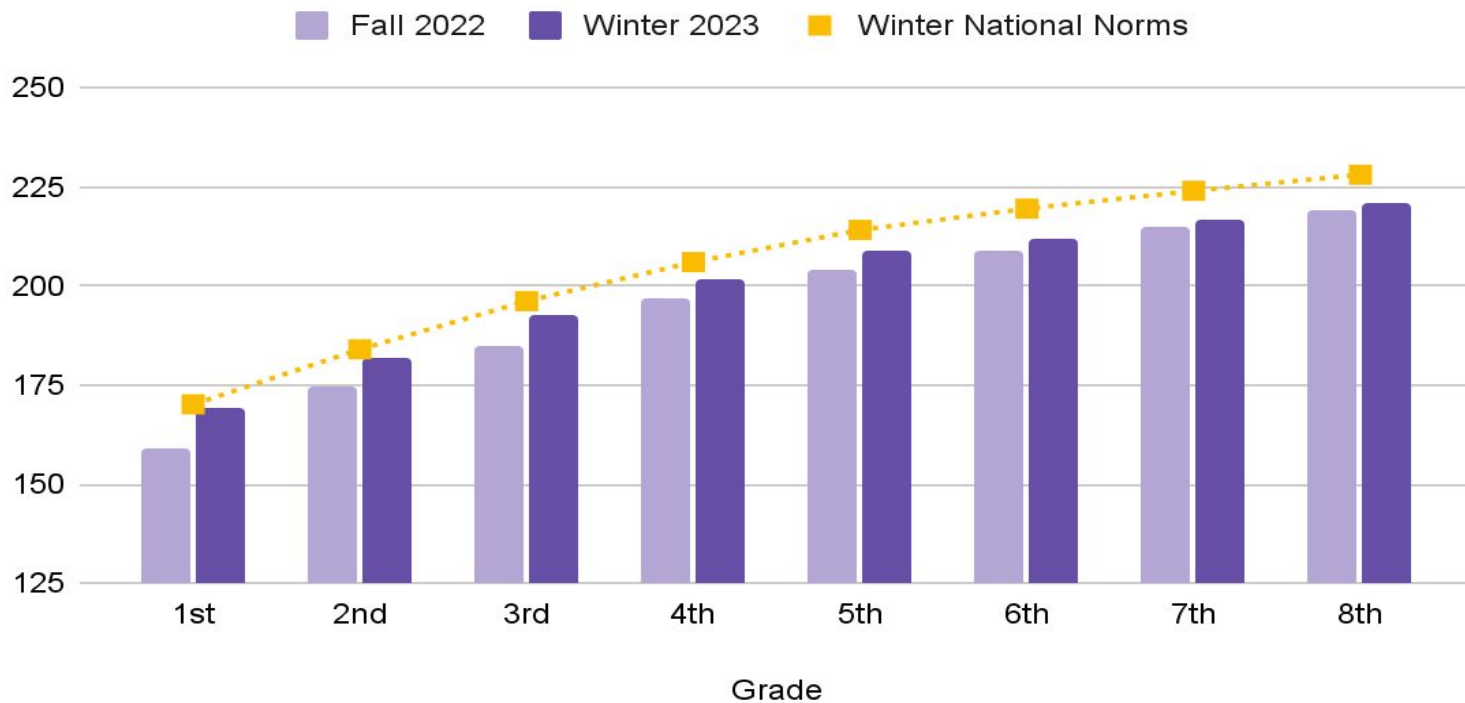
Students with Disabilities

Reading: Fall to Winter, English Learners



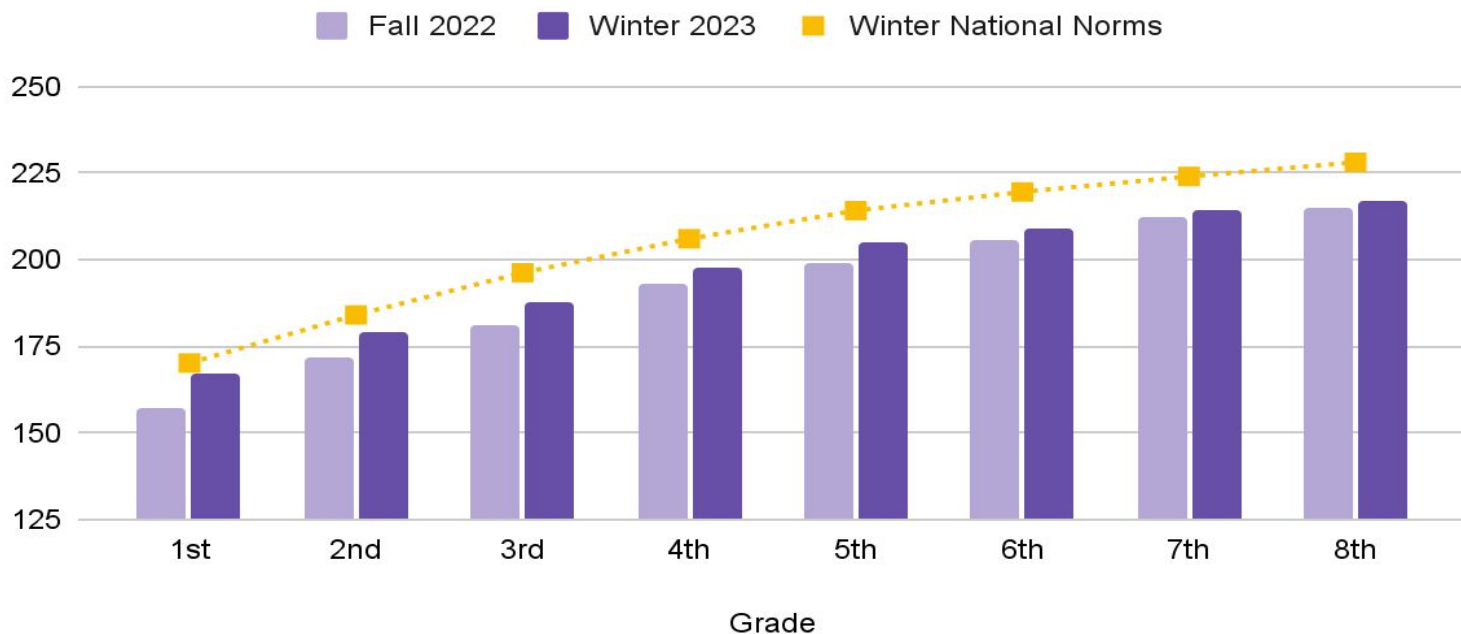
Students who are English Learners

Math: Fall to Winter, All Students



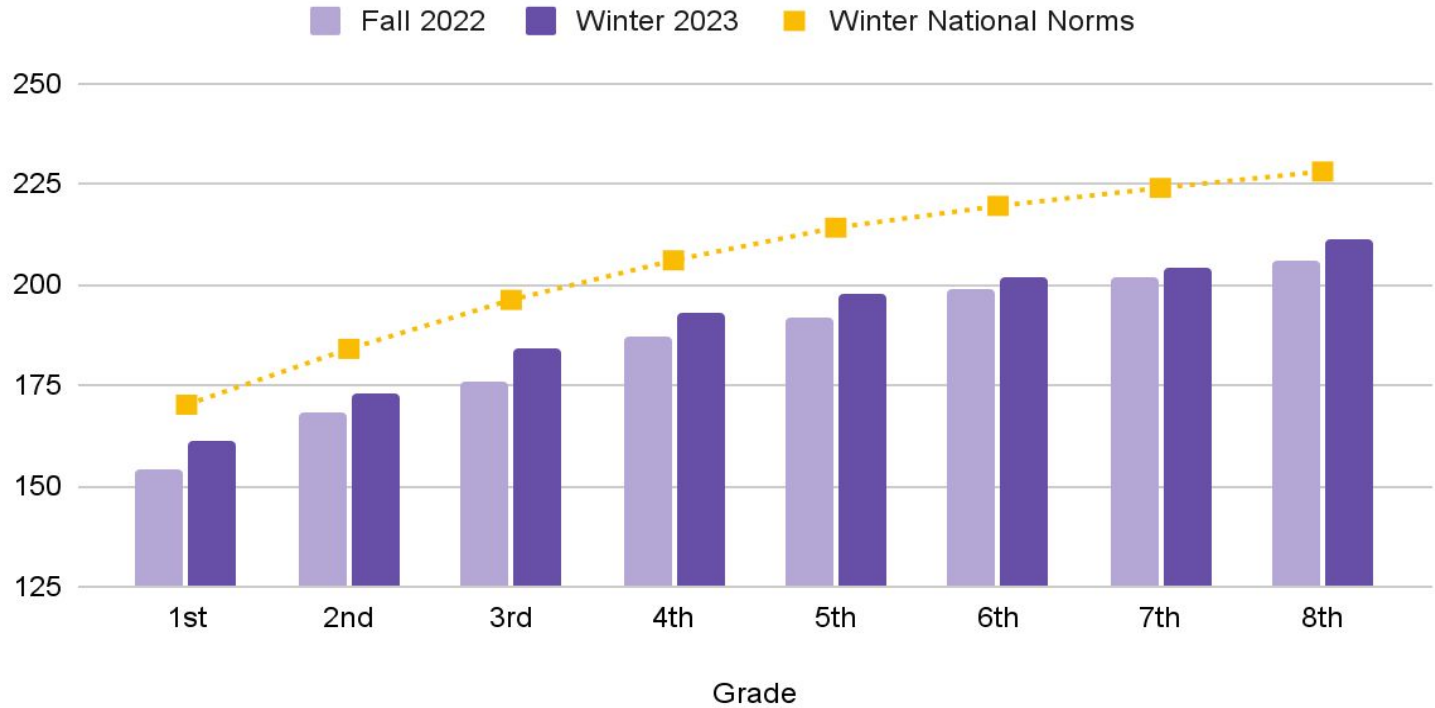
All Students

Math: Fall to Winter, Students who are Socioeconomically Disadvantaged



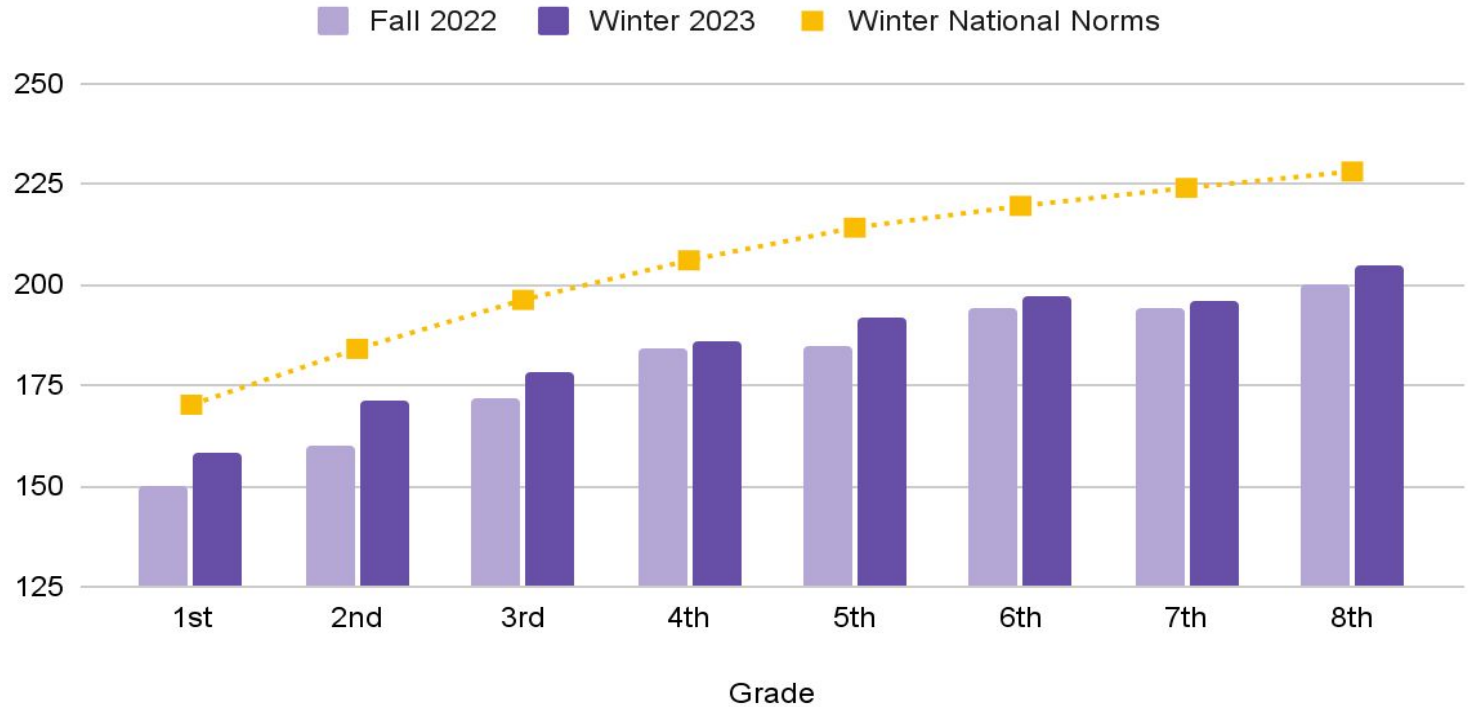
Students who are Socioeconomically Disadvantaged

Math: Fall to Winter, Students with Disabilities



Students with Disabilities

Math: Fall to Winter, English Learners



Students who are English Learners

☆

Every student
group has shown
growth!

☆

☆





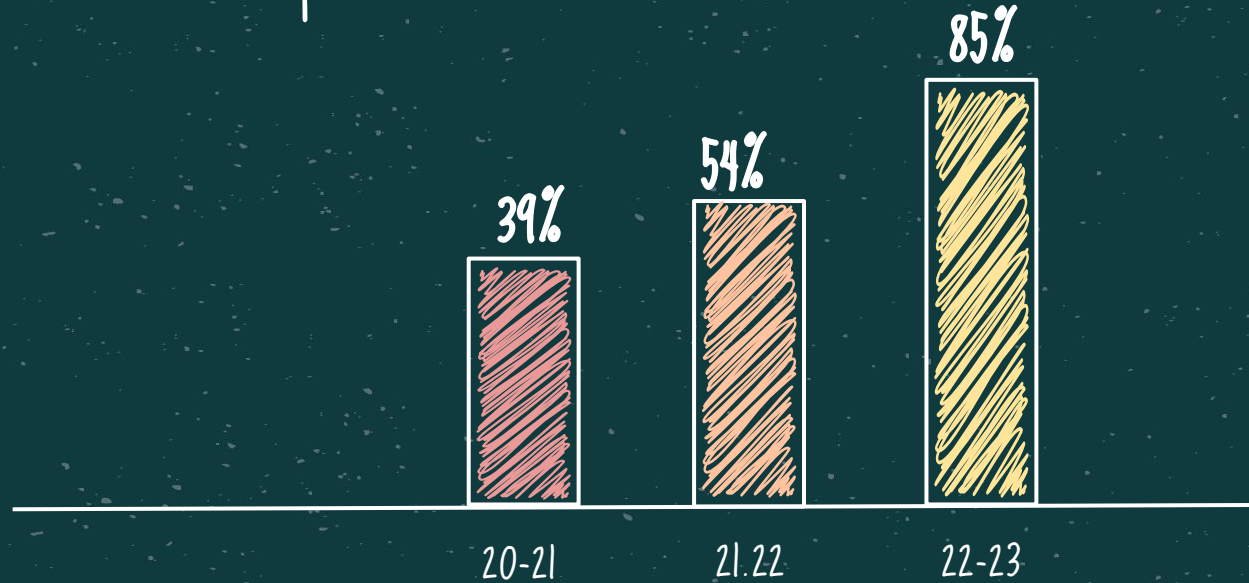
03. CHKS Data

California Healthy Kids Survey



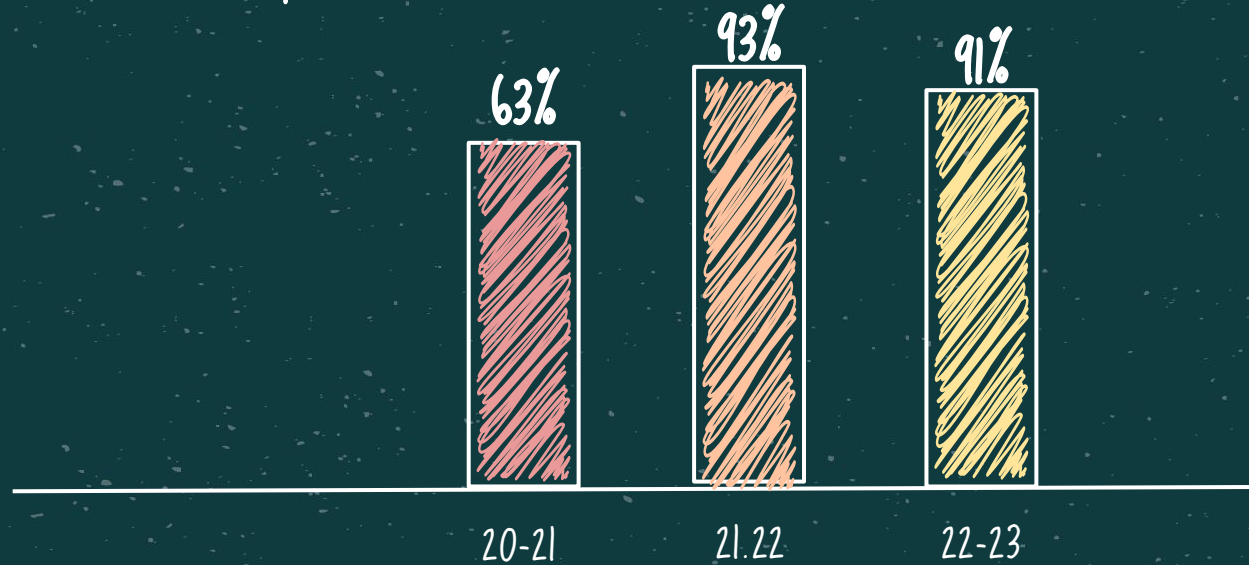


SAFETY: Percentage of **parents** reporting that school is a safe place for their student. (Goal is 85%)

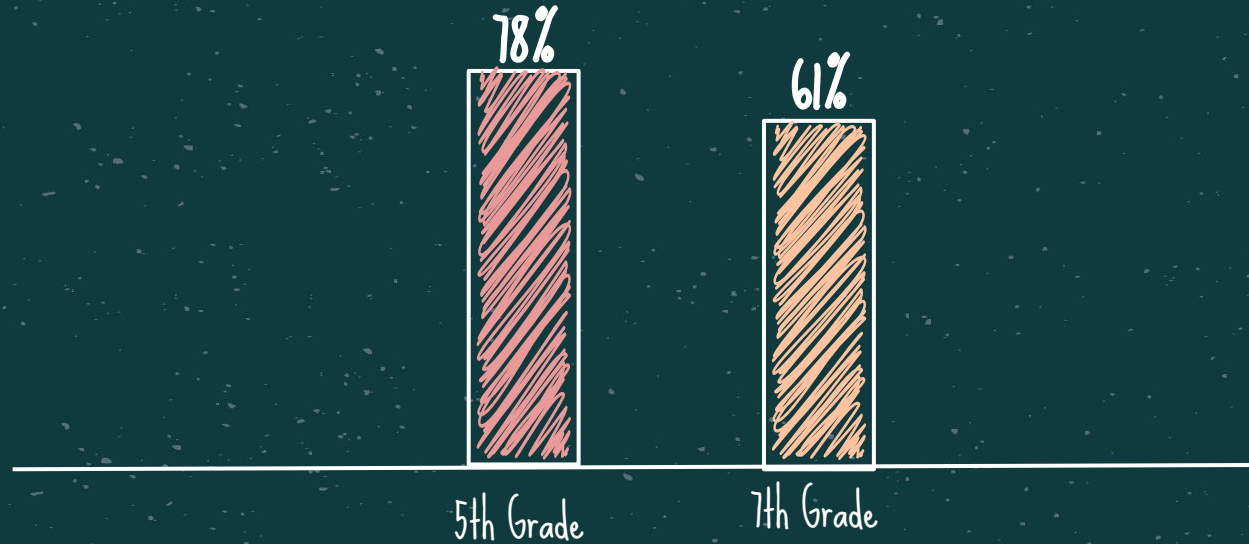




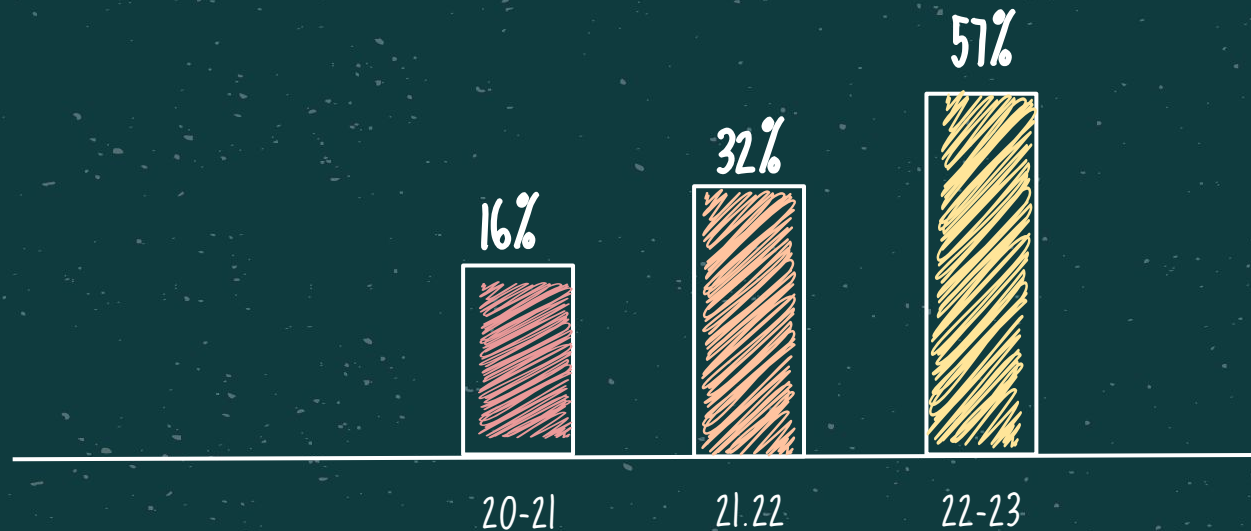
SAFETY: Percentage of **staff** reporting that school is a safe place for their students. (Goal is 85%)



☆ SAFETY: Percentage of **students** reporting they feel safe at school (Goal is 85%) ☆

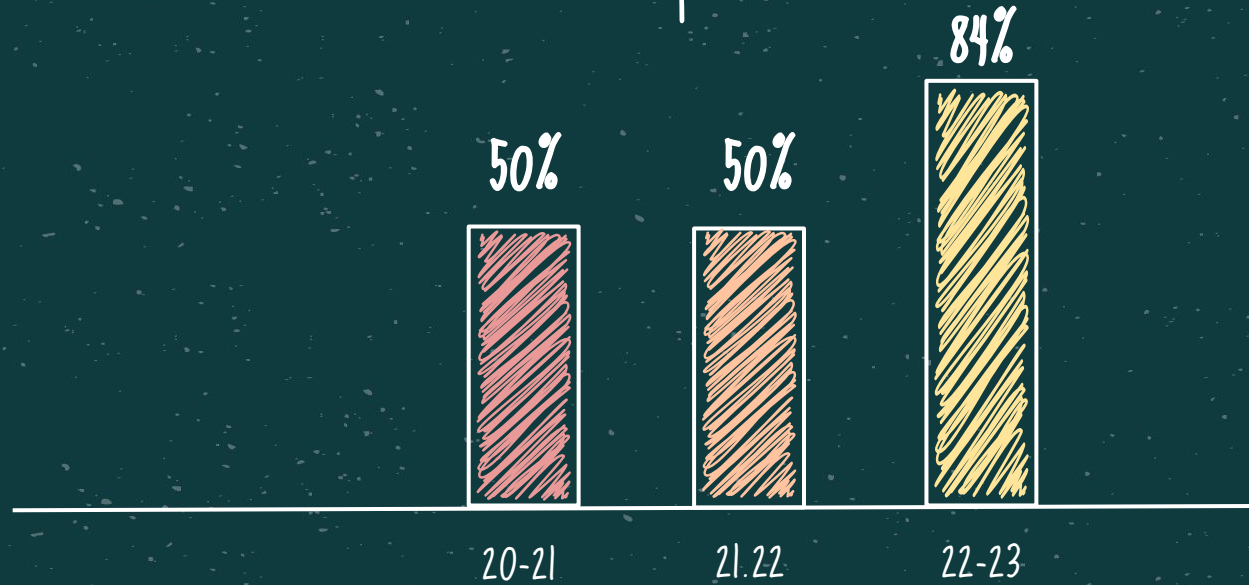


☆ CONNECTEDNESS: Percentage of **parents** reporting active participation at school. (Goal is 85%) ☆

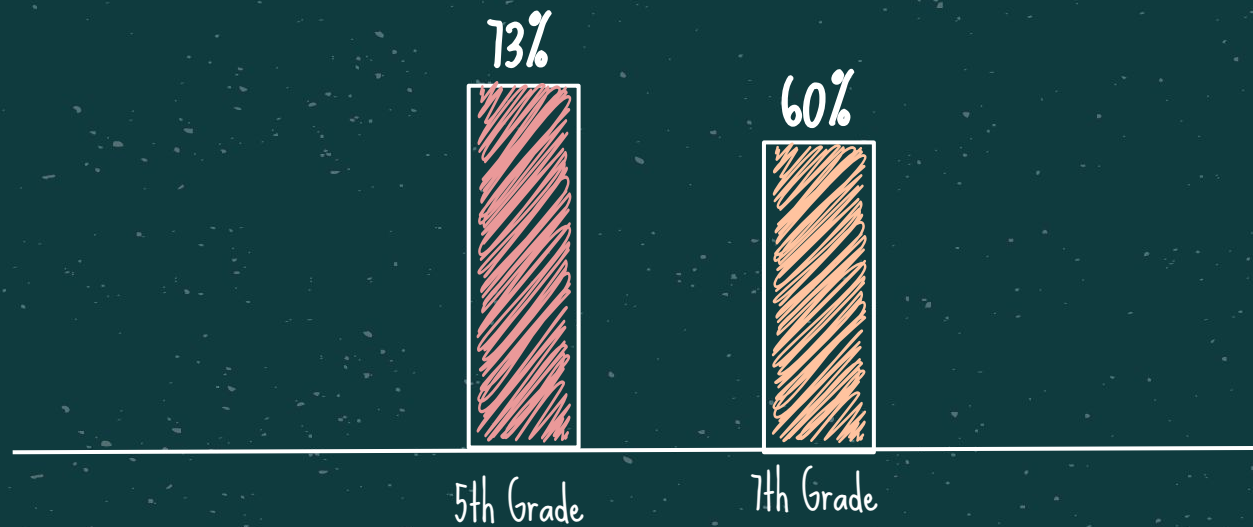




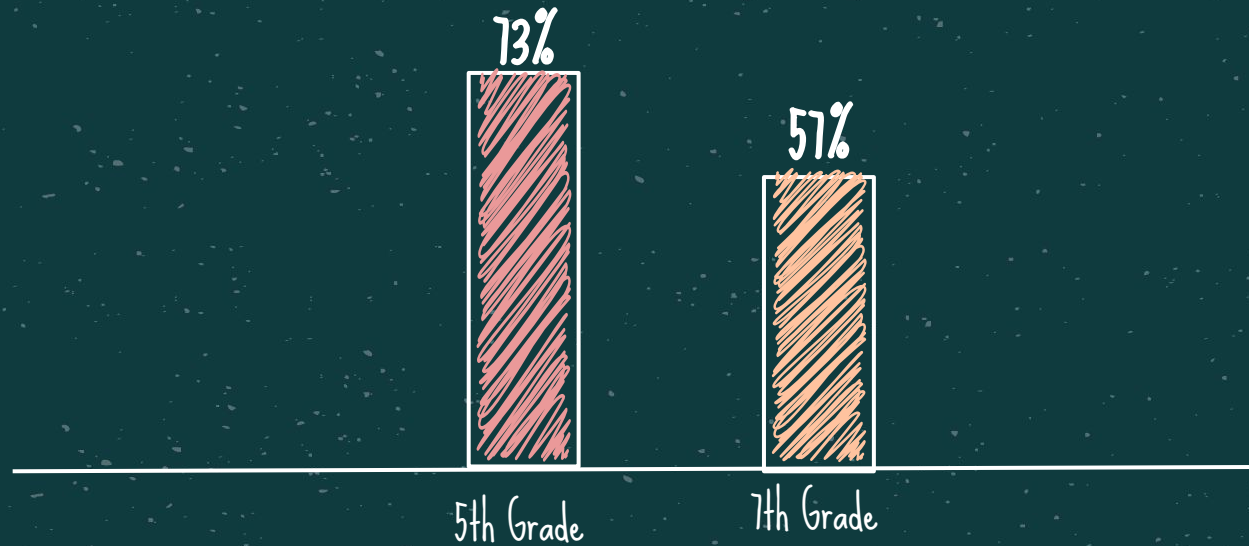
CONNECTEDNESS: Percentage of **staff** reporting that their work environment is positive. (Goal is 85%)



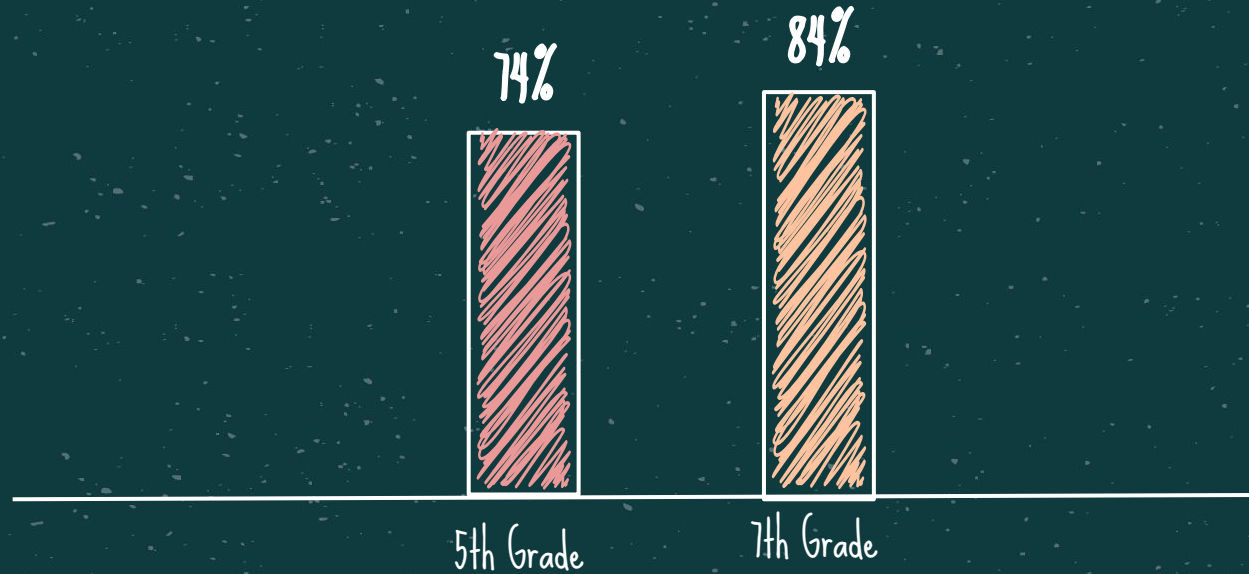
☆ CONNECTEDNESS: Percentage of **students** reporting they feel connected at school. (Goal is 85%) ☆



Percentage of responding "pretty much true" or "very much true" that they have caring adults in school. (Goal is 85%)



☆
Percentage of Student respondents reporting receiving social emotional learning supports at school most or all of the time (Goal is 86%)





04. Student Support Data

How are we supporting our students needs?





School Counselor Impact - All Students



330+

Guidance Lessons
taught

350+

Small Group Lessons
taught

350+

Students receiving
Check In/Check Out
support

1700+

Students receiving
individual or "Drop In"
support with the
School Counselor

4

Counseling interns
completing their
hours in LUSD schools

1500+

Parent outreaches
made in support of
students



Self Harm/Suicide Screenings



Tierra del Sol

8

12

Lakeside Middle School

Lakeside Farms

2

7

Lindo Park

Lemon Crest

2

1

Lakeview

Riverview

4

1

DREAM



Some troubling CHKS data

Percentage of 7th graders reporting that they had chronic sad or hopeless feelings in the last 12 months.

30%



Percentage of 7th graders reporting that they have seriously contemplated suicide in the last 12 months.

9%

Mid-Year Data at a Glance

August 2022 - December 2022

570

Total Student Support Interactions

359

Interventions which may include
Individual Counseling, Group
Counseling, Family Engagement,
Social & Emotional Learning (SEL), &
Walk-In/Zoom-In Crisis Intervention

211

**Collaborative Consultation with Families/School Staff
& Referrals to Community-Based Organizations**

141

Synchronous Contacts in addition
to counseling & sessions, via phone,
video, or in person

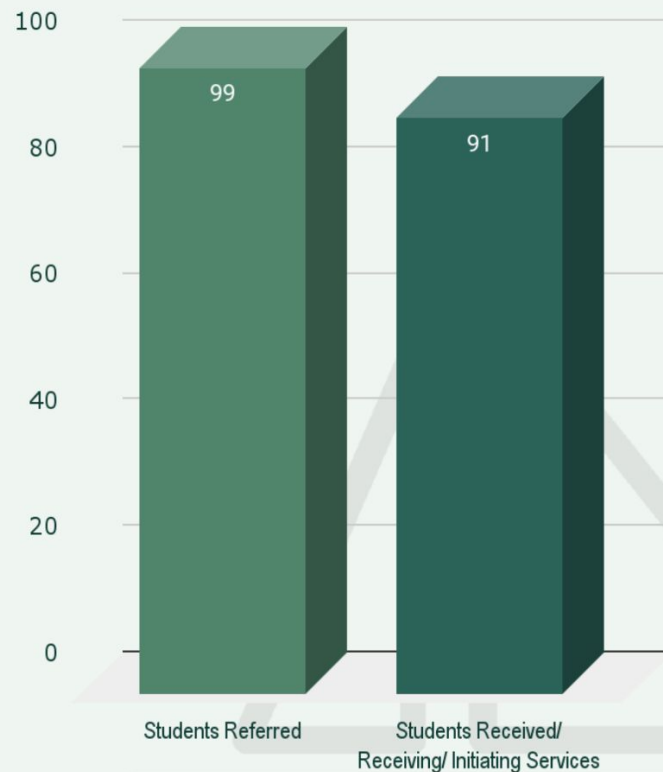
70

Asynchronous Contacts via
email or voicemail

Mid-Year Data at a Glance

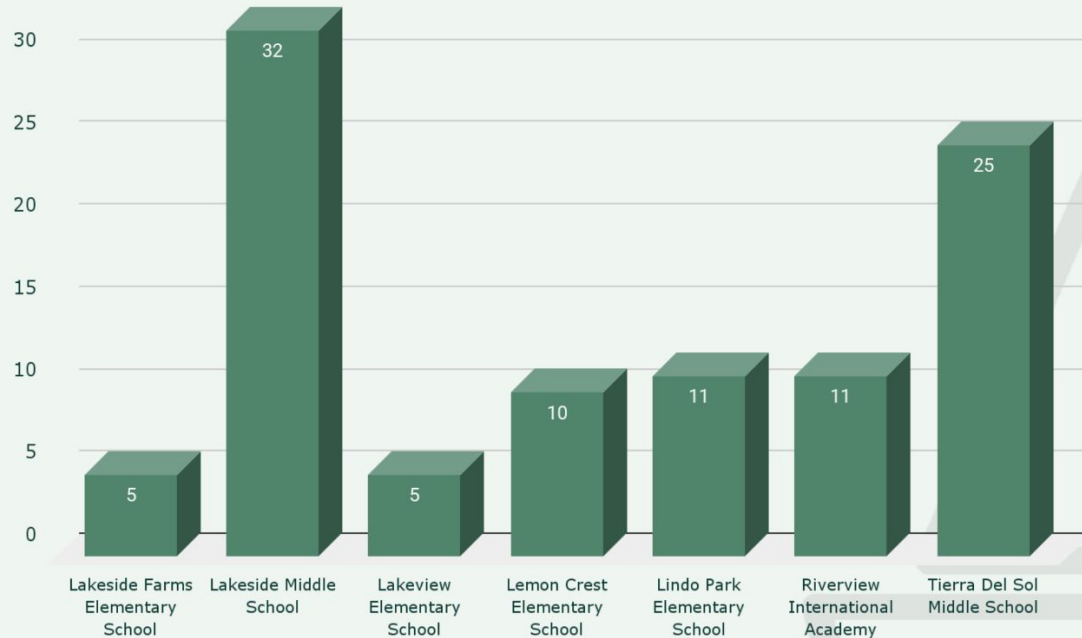
August 2022 - December 2022

- 99 students referred
- 91 students received, currently receiving, or initiating services
- 91.92% students received, currently receiving, or initiating services
 - Number of program referrals does not include crisis response/intervention, safety assessments, and unscheduled walk-in/Zoom sessions



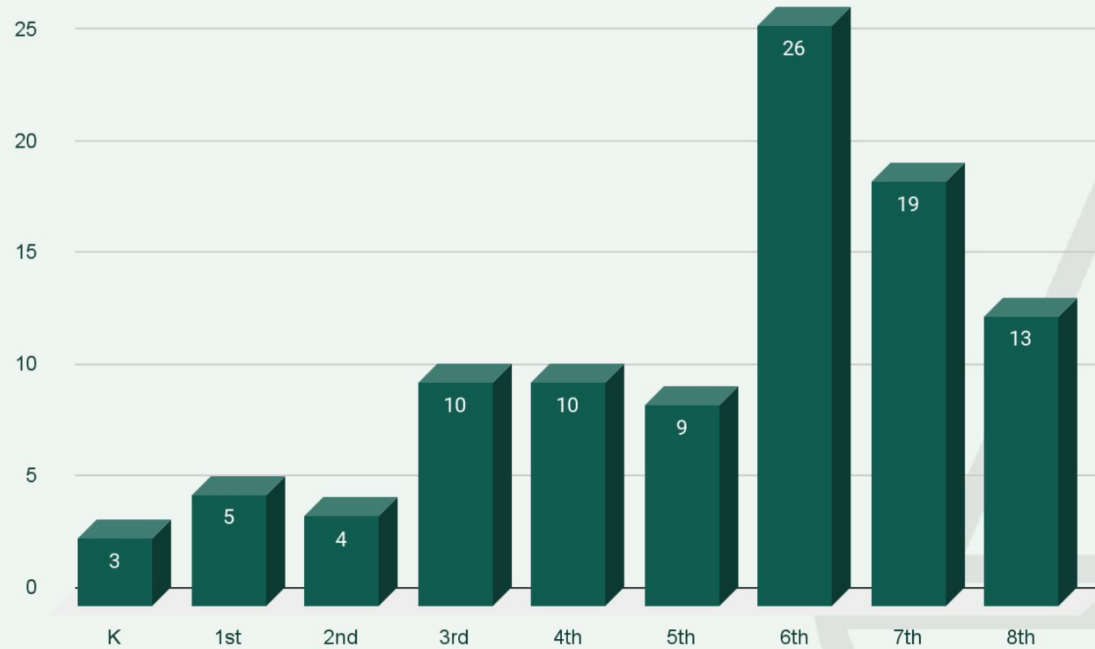
School-Based Therapy Program Data

Number of Referrals by Site



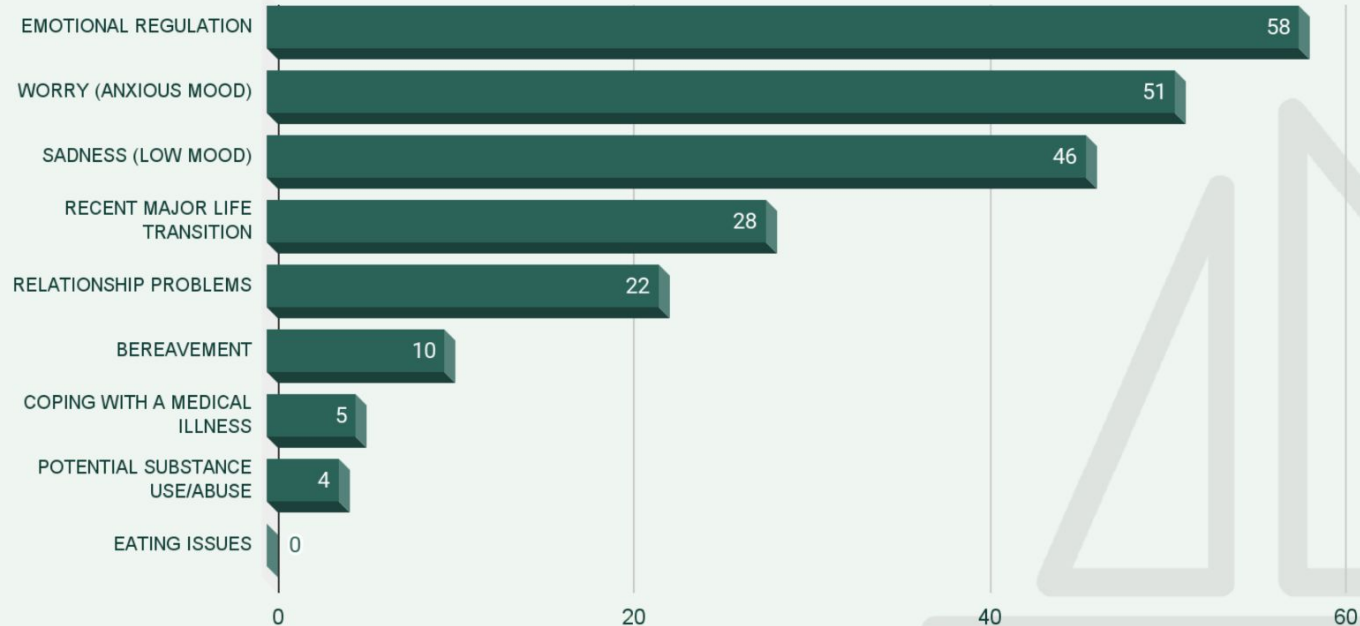
School-Based Therapy Program Data

Number of Referrals by Grade

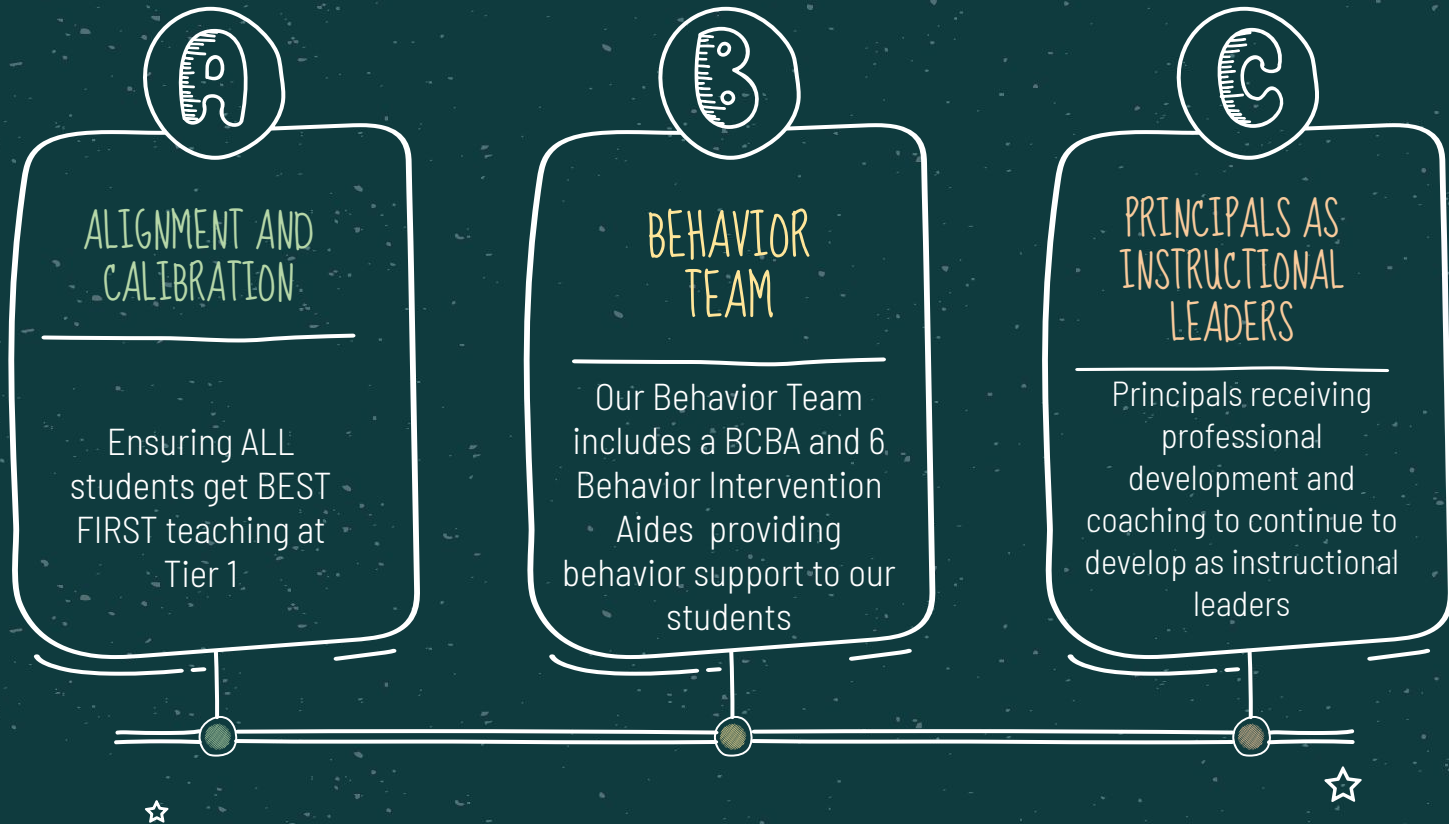


School-Based Therapy Program Data

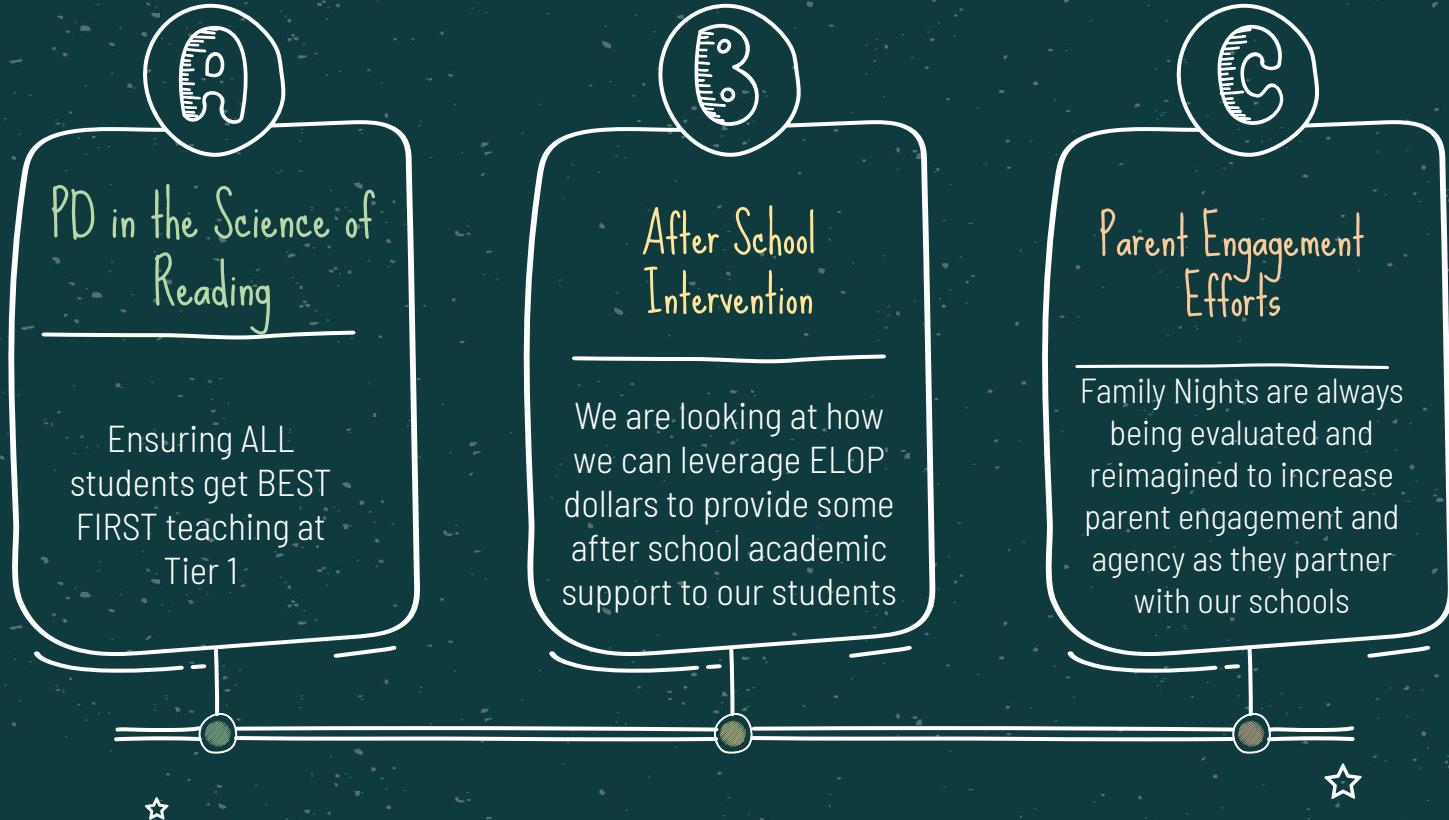
Reasons for Referral



☆ More MTSS Systems that are making a difference for our students and families !



Additional MTSS Systems under development!





What else would
you like to
know?

$\sqrt{123}$

CREDITS: This presentation template was created by **Slidesgo**, including icons by **Flaticon**, and infographics & images by **Freepik**

Please keep this slide for attribution.

+ x ÷