

L.U.S.D.

# Annual Report to the Board

L.U.S.D.

Maintenance

L.U.S.D.

Operations

L.U.S.D.

Transportation

L.U.S.D.

Facilities

# L.U.S.D.

## Maintenance

- 10 Maintenance Workers
- 1 Admin Support Specialist
- 500,000 Square Feet of Interior Space
- 100 Acres of Property
- 1,871 Completed Work Orders 2020-21

# L.U.S.D.



Here are a few examples of what took place throughout the 2020-21 school year.

# L.U.S.D.

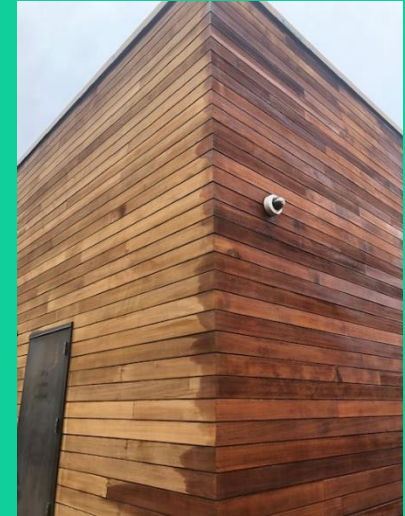
## DO Plumbing Repair





# L.U.S.D.

## DO Exterior Siding Preservation



# L.U.S.D.

## EH Siding Repair



# L.U.S.D.

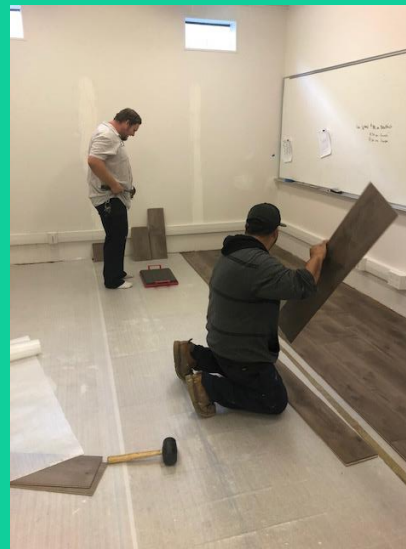


## District Wide Filter Change 6x's per year





# L.U.S.D.

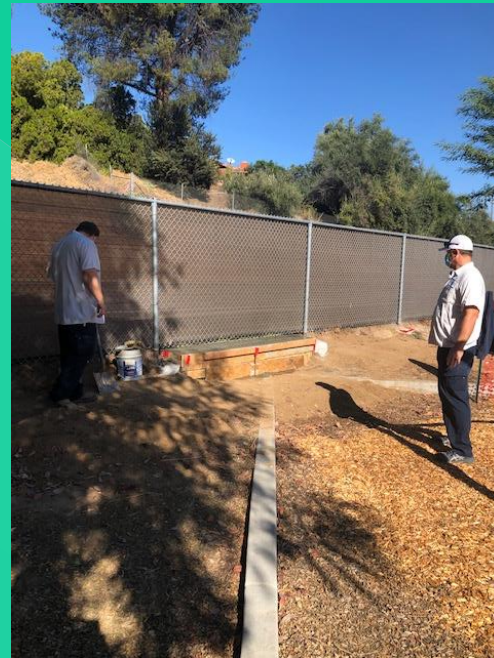


## Central Kitchen Office/Interior Paint



# L.U.S.D.

## LC Playground Repair



# L.U.S.D.

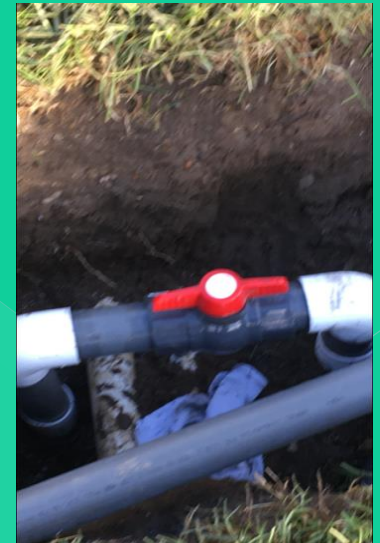
## LC Drinking Fountain Changed to Hand Washing





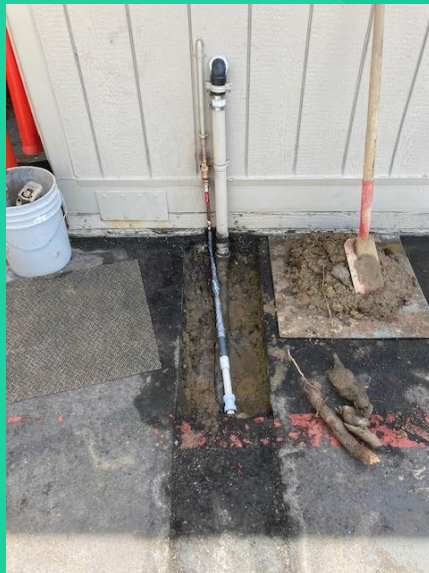
# L.U.S.D.

## LC Repair to Main Water Service



L.U.S.D.

## LC Waterline Repair





# L.U.S.D.

## LF Storm Drain Cleanout



# L.U.S.D.

## LF Multipurpose HVAC





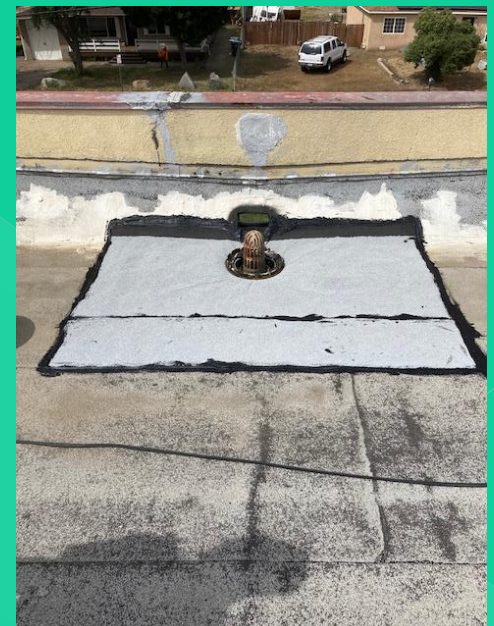
# L.U.S.D.

## LF Lunch Tables



# L.U.S.D.

## LF Roof Repair



L.U.S.D.

## LMS Toilet Repair





# L.U.S.D.

## LP K-2 Kitchen Repair



# L.U.S.D.

## LP Preschool Siding Repair



# L.U.S.D.

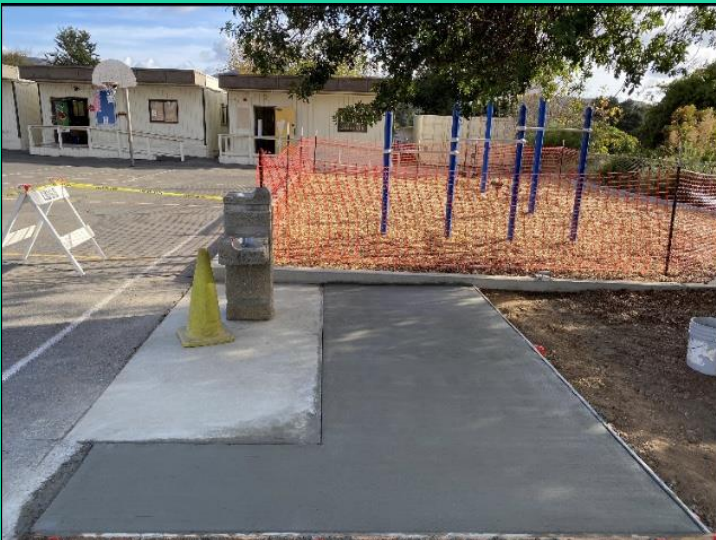
## LV Gates





# L.U.S.D.

## LV Small Handwashing Station



# L.U.S.D.

## LV Drain Repair



# L.U.S.D.

## LV Tree Trimming





# L.U.S.D.

## WG Room 9 Floor Repair



# L.U.S.D.

## COVID Supplies



COVID SUPPLIES TOTALS					
		Purchased	4/22/2021	Distributed	On Hand
100	Thermometers	ea	436	0	396
101	Gloves disposable pack of 100	pack	705	0	369
102	Social distance sticker	ea	41	0	41
103	Safety glasses	ea	120	0	20
104	Hand sanitizer 8 oz	ea	224	0	100
105	Hand sanitizer 16 oz	ea	3,780	38	1583
106	Hand sanitizer 67.6 oz	ea	1,068	13	372
107	Face mask N 95	ea	460	0	460
108	Face mask Adult disposable	ea	26,800	16300	4,700
109	Face mask Kids disposable	ea	21,000	4150	16300
110	Face mask Adult Cloth	ea	7,405	157	4681
111	Face mask Kids Cloth	ea	22,461	50	5750
112	Face shield Kid	ea	460	0	325
113	Face shield w/o drape	ea	4,014	25	1254
114	Face shield w drape	ea	999	0	734
115	Face shield glasses X2 shield	ea	1,496	0	834
116	Water case = 24-10 oz bottles	case	336	30	386
117	Spray bottle 32 oz	ea	400	0	344
118	Hudson sprayers	ea	50	2	46
119	Cotton swabs	Bag	21	0	17
120	Rubbing alcohol 34 left from 68	ea	394	1	338
121	Tyvek suits L	ea	25	0	0
122	Tyvek suits XL	ea	48	4	14
123	Tyvek suits XXL	ea	50	2	24
124	Tyvek suits XXXL	ea	22	2	2
125	Micro Fiber rags	ea	17,604	0	4032
126	HD Black gloves	Pair	12	0	0
127	Protexus Spray	ea	13	0	0
128	Protexus Spray tablets	jar	48	0	1
129	Duct tape	Roll	161	0	57
130	Dawn soap	ea	128	4	68
131	Scott paper towels (box of 6)	Box	17	0	0
132	Waxie 730	ea	136	0	12
133	Tissue	ea	660	0	286

408 gallon of hand sanitizer

45,291 Face masks

# L.U.S.D.

## Operations

- 20 Custodians
- 500,000 Square Feet of Interior Space
- 100 Acres of Outside Space



L.U.S.D.

LC Custodian





L.U.S.D.

EH Custodian





L.U.S.D.

LF Custodian



L.U.S.D.

LV Custodian



# L.U.S.D.

## COVID Custodian

### COVID Worker P.P.E.



(2)  
Face shields

(1)  
Safety glasses

(2)  
Cloth masks

(1)  
Safety vest

(1)  
Name Badge

Gloves  
available at  
site as  
needed

\*Keys will be made available daily in front office and shall be turned in daily.

\*Time card (EWA) shall be turned into Christine at the Maintenance shop monthly.

\* If you have questions or concerns or an emergency Please contact Todd Owens 619 507 9890

# L.U.S.D. Transportation

- 22 Buses
- 16 Drivers
- 4 Aides
- 1 Dispatcher
- 1 Driver Trainer/Dispatcher
- 2 Mechanics
- 1 Admin Support Specialist
- 118 Special Needs Students
- 375 General Ed Students
- 120,000+ miles traveled annually





# L.U.S.D. Transportation

- 22 Buses
- 1 Van(2 on order)
- 10 Bus Drivers
- 2 Van Drivers
- 4 Aides
- 1 Transportation Assistant/Bus Driver
- 0 (Retired) Driver Trainer/Dispatcher
- 1 (+1 Retired) Mechanics
- 1 Admin Support Specialist
- 116 Special Needs Students
- 76 General Ed Students
- 77,938 + miles Traveled Annually



# L.U.S.D.



Transportation  
We had a lot of people retire!



# L.U.S.D.



## Transportation





L.U.S.D.



Transportation





# L.U.S.D.



Transportation  
New Buses #61 & #62



# L.U.S.D.

Transportation  
New Food Truck



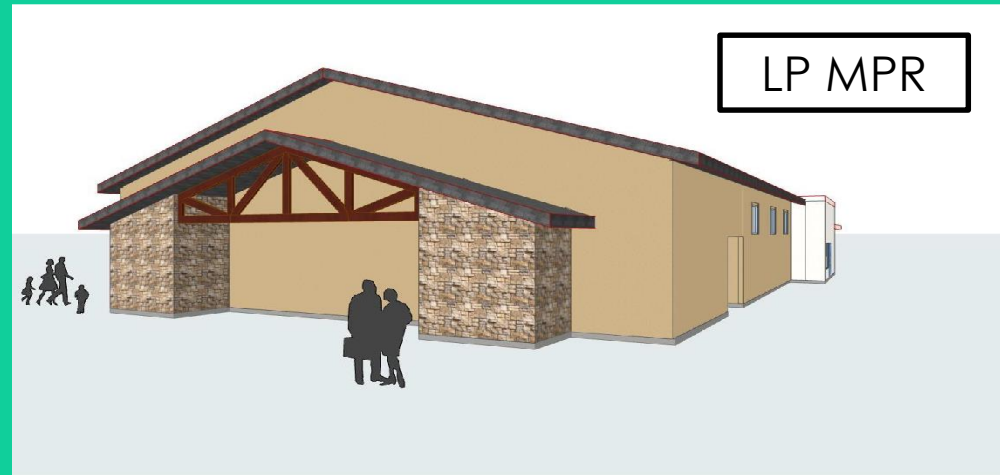
# L.U.S.D.

Bond/Facilities

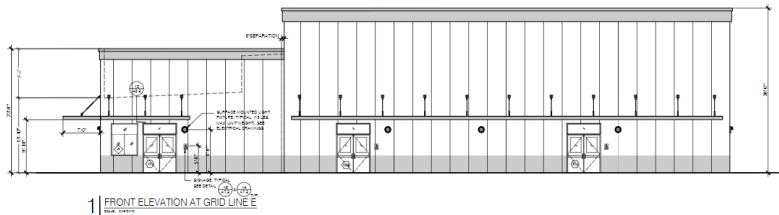
The next few pictures are of projects within our bond program.

# L.U.S.D.

## Planning for 2020-21



TDS MPR/GYM





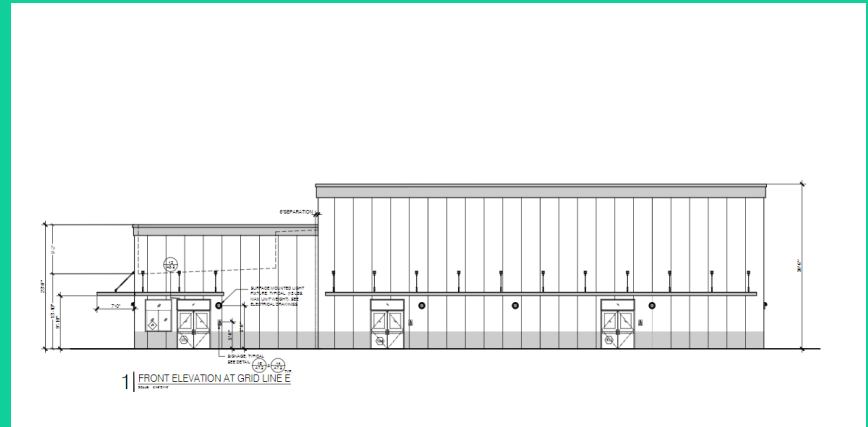
# L.U.S.D.

## LP Multipurpose



# L.U.S.D.

## TDS GYM



# L.U.S.D.

## TDS MPR Remodel



# L.U.S.D.

## LF Front Office/Site Work





L.U.S.D.

Any Questions?