

LUSD Math Pathways

Building a long term course of study and appropriate supports that aligns with Grossmont Union High School District's pathways and that ensures continuous and coherent 6-12 alignment of instruction.



GUHSD Integrated Math Pathways



9th Grade

10th Grade

11th Grade

12th Grade

Integrated Math IC

Integrated Math IIC

Integrated Math IIIC

4th Year Options
(Vary by Site)

Integrated Math IH

Integrated Math IIH

Integrated Math IIIH

Consumer Math
Algebra IIIC
College Prep Stats
Pre-Calculus IC
Pre-Calculus 1H

Math Graduation Requirement (Class of 2022 and beyond)
"Thirty (30) units of math are required and any math course counts toward the unit requirement. One or a combination of these courses must meet or exceed the rigor of the content standards of Mathematics II or transfer equivalent."

Integrated Math IIIH+

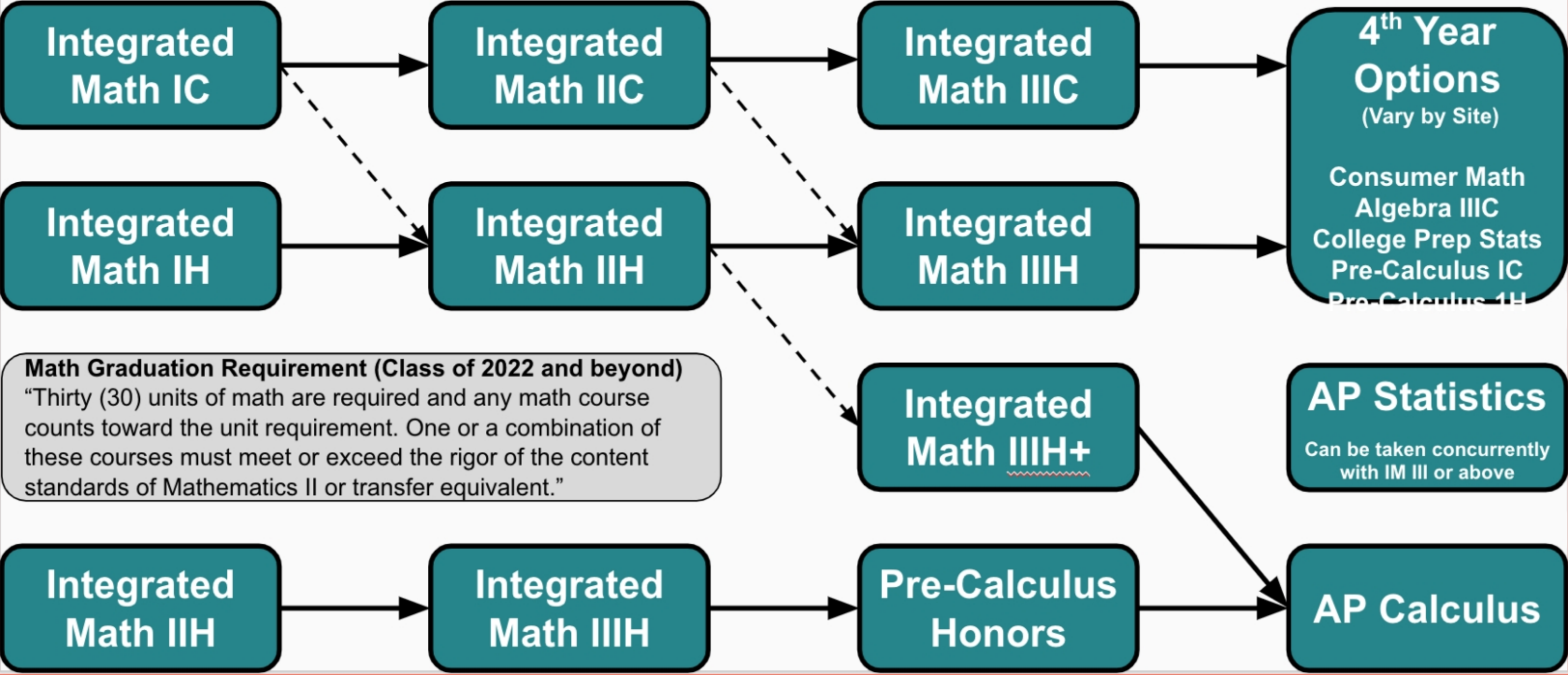
AP Statistics
Can be taken concurrently with IM III or above

Integrated Math IIH

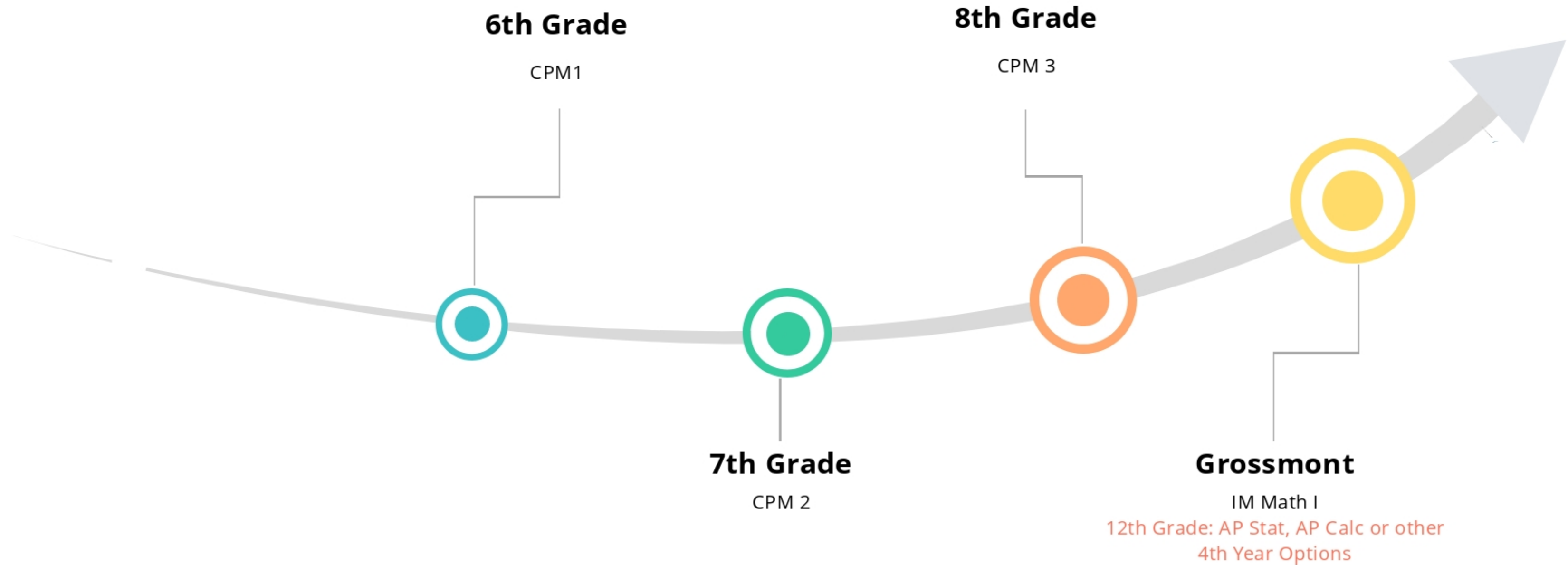
Integrated Math IIIH

Pre-Calculus Honors

AP Calculus

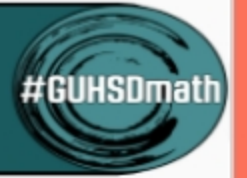


2019-2020 LUSD Core Pathway





GUHSD Integrated Math Pathways



9th Grade

10th Grade

11th Grade

12th Grade

Integrated Math IC

Integrated Math IIC

Integrated Math IIIC

4th Year Options
(Vary by Site)

Consumer Math
Algebra IIC
College Prep Stats
Pre-Calculus IC
Pre-Calculus 1H

Integrated Math IH

Integrated Math IIH

Integrated Math IIIH

AP Statistics

Can be taken concurrently with IM III or above

Math Graduation Requirement (Class of 2022 and beyond)
"Thirty (30) units of math are required and any math course counts toward the unit requirement. One or a combination of these courses must meet or exceed the rigor of the content standards of Mathematics II or transfer equivalent."

Integrated Math IIIH+

Integrated Math IH

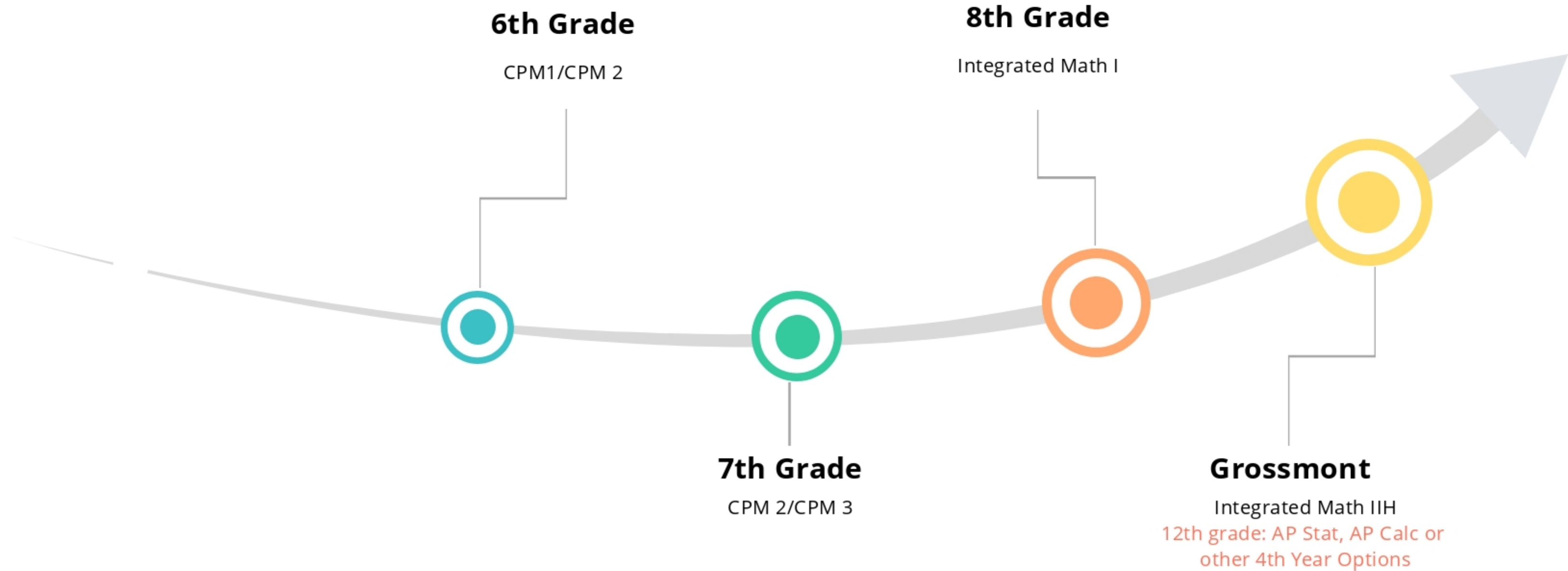
Integrated Math IIIH

Pre-Calculus Honors

AP Calculus

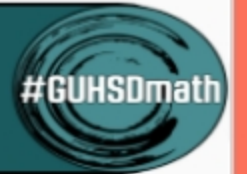


2019-2020 LUSD Accelerated Pathway





GUHSD Integrated Math Pathways



9th Grade

10th Grade

11th Grade

12th Grade

Integrated Math IC

Integrated Math IIC

Integrated Math IIIC

4th Year Options
(Vary by Site)

Consumer Math
Algebra IIIC
College Prep Stats
Pre-Calculus IC
Pre-Calculus 1H

Integrated Math IH

Integrated Math IIH

Integrated Math IIIH

Math Graduation Requirement (Class of 2022 and beyond)
"Thirty (30) units of math are required and any math course counts toward the unit requirement. One or a combination of these courses must meet or exceed the rigor of the content standards of Mathematics II or transfer equivalent."

Integrated Math IIIH+

AP Statistics
Can be taken concurrently with IM III or above

Integrated Math IH

Integrated Math IIIH

Pre-Calculus Honors

AP Calculus



LUSD Board Goal #1



Academic Achievement: All students will make academic growth in order to reach mastery of grade level standards, individual goals, and development of the LUSD Student Profile competencies. Schools will set annual goals to improve student outcomes and close achievement gaps.

2019-2020

LUSD Math Pathways Task Force



Grossmont Feeder Districts

Some that do offer acceleration

Santee

Acceleration in 8th grade, Before and After School

Cajon Valley

Acceleration in 7th and 8th Grade, Select Schools

La Mesa Spring Valley

Acceleration in 7th and 8th Grade

Jamul Dulzura

Acceleration in 8th Grade

Some that don't offer acceleration

Alpine

No Acceleration

Dehesa

No Acceleration

Lemon Grove

Acceleration that does not align to GUHSD

Questions...

Best Practice

What do research and the Common Core State Standards say about

- *Tracking
- *Compacting
- *Accelerating in middle school

Equity

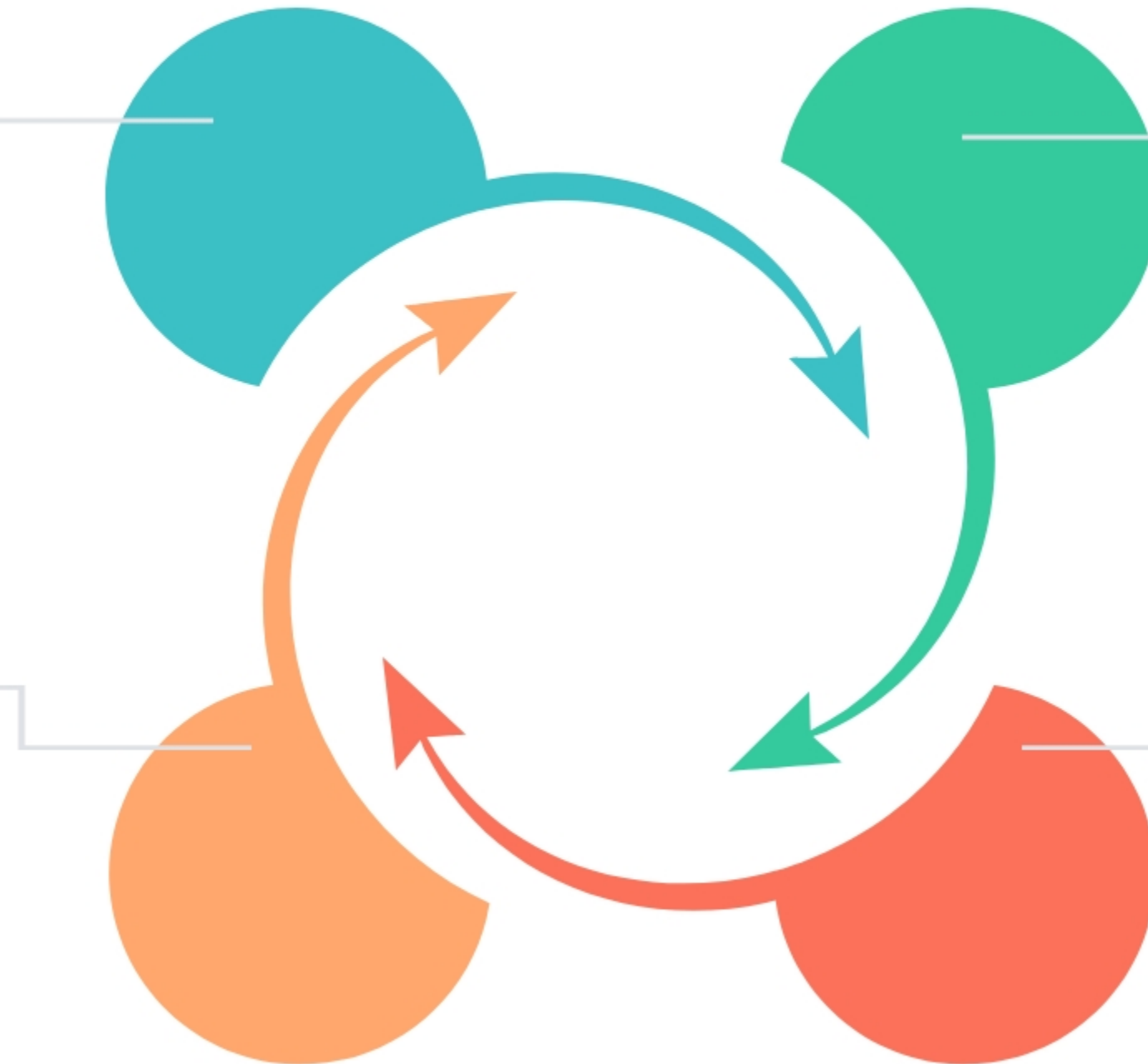
How do our course offerings meet the needs of all of our students? Are all of our students prepared for 9th grade?

Capacity

What resources do we have to provide core classes, accelerated classes, and the necessary support classes?

Efficacy

How effective have our current core and acceleration efforts been? Are these models creating learning gaps? If so, how do we address those?



Our Plan

2019-2020 Accelerated Math Pathway

Temporary pathway to honor commitments made and to create the time and space to forge our way forward

LUSD Math Pathways Task Force

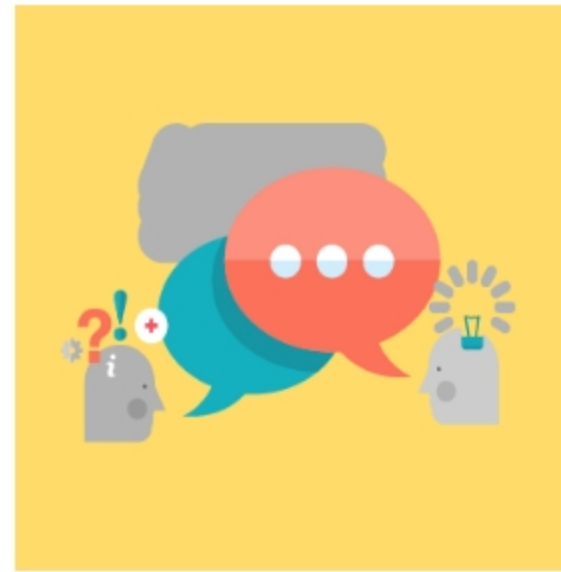
Stakeholder team researching and crafting a long term course of study and appropriate supports that aligns with Grossmont Union High School District's pathways and that ensures continuous and coherent 6-12 alignment of instruction. Board report in spring, 2020.

LUSD Long Term Math Pathways

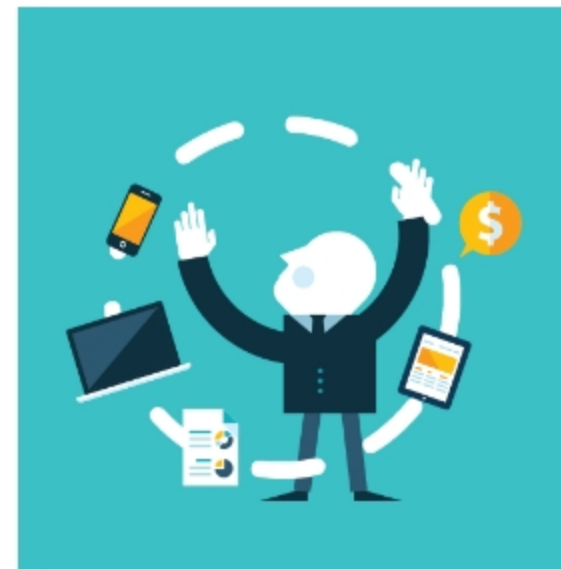
Implementation and progress monitoring



2019-
2020



2019-
2020



2020-

Thank You!

