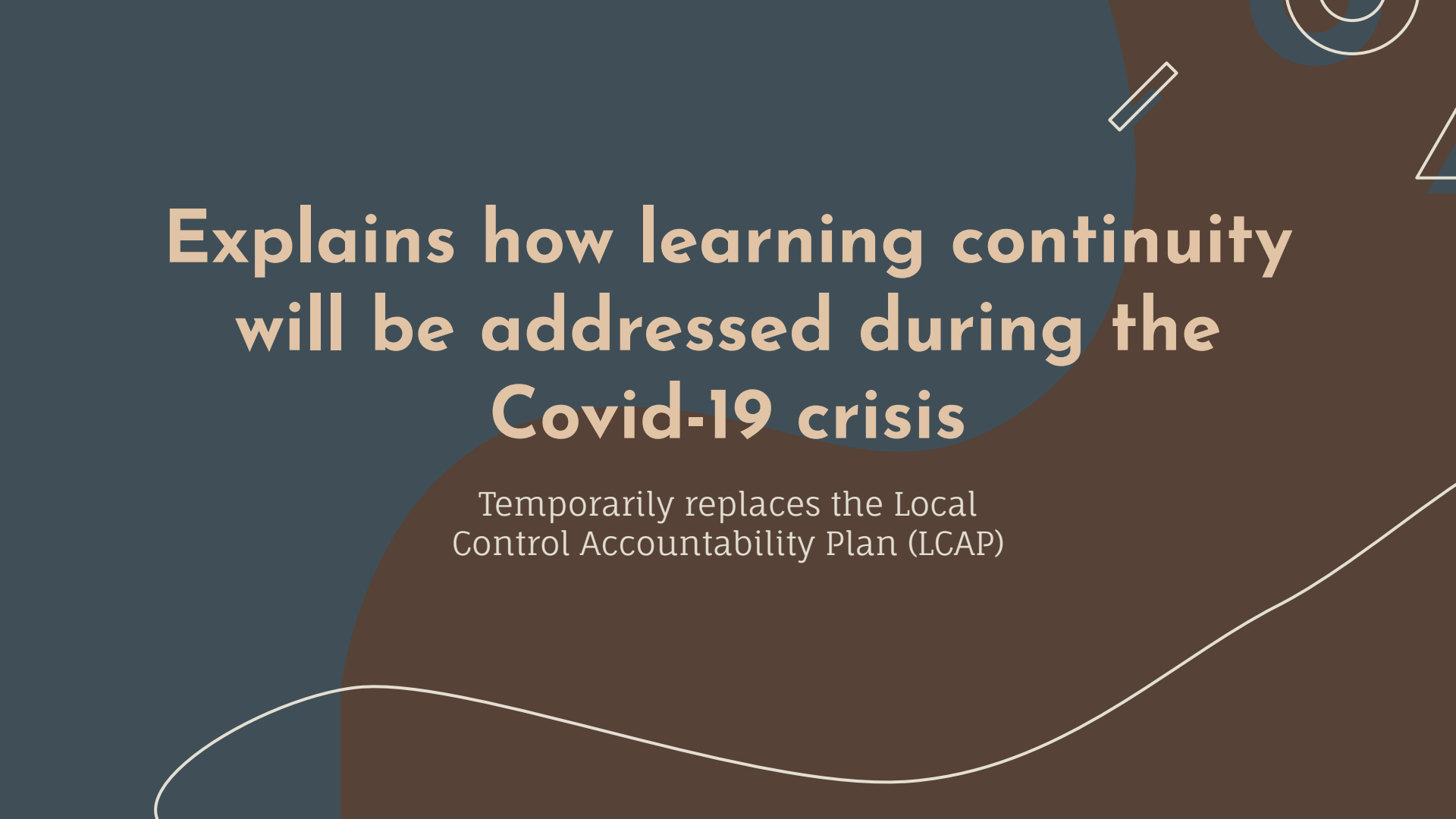


A top-down view of a desk with a laptop, a cup of coffee, a succulent, a notebook, a ruler, and a pencil. The desk surface is a dark, textured brown. The laptop is silver and open, showing the keyboard and trackpad. The cup of coffee is black and filled with a dark liquid. The succulent is small and green, in a clear plastic container. The notebook is white with a spiral binding, and the ruler is black with white markings. The pencil is black and sharpened.

Learning Continuity and Attendance Plan

Lakeside Union School District



Explains how learning continuity will be addressed during the Covid-19 crisis

Temporarily replaces the Local
Control Accountability Plan (LCAP)

CONTRIBUTORS



ALL STAFF

All staff,
district-wide Zoom
meeting,
committee
participation



TEACHERS

Additional surveys,
committee
participation



PARENTS

Town Hall
Meetings,
committee
participation

- A.** Distance Learning Committee
- B.** Re-Opening Committee
- C.** Budget Committee

COMMITTEE WORK





01. Academic

In-person instruction,
Distance Learning, Learning
loss

02. Mental Health

Socio-emotional well being

03. Engagement

Student and family
engagement and outreach,
nutrition

04. Increased & Improved Services

Using our funds to the benefit
of students of low SES, FY,
Homeless



01.

Academic

Phases of Reopening

Reopening Phases	Learning Model	Percentage of Students on Campus	Class Size	Parameters
Phase 3	<ul style="list-style-type: none"> Full On-Campus Distance Learning Strand Homeflex 	100% MINUS DISTANCE LEARNINGS STRAND AND HOMEFLEX	TK-2: 24 3-8: 30	Full On-Campus <ul style="list-style-type: none"> with safety protocols Distance Learning Strand HomeFlex <ul style="list-style-type: none"> Home School Program with opportunities for on-campus enrichment
Phase 2	<ul style="list-style-type: none"> Blended Learning Model Distance Learning Strand HomeFlex* 	50% MINUS DISTANCE LEARNINGS STRAND AND HOMEFLEX	TK-2: 14-15 3-8: 18	Blended Model <ul style="list-style-type: none"> Students attend school 2 days per week and participate in distance learning 3 days per week Distance Learning Strand <ul style="list-style-type: none"> Students may opt into the Distance Learning strand upon registration.. Students may move from Full On Campus into the Distance Learning Strand with 1 week's notice Students may move from the Distance Learning Strand to Full On Campus at the end of each trimester HomeFlex <ul style="list-style-type: none"> Home School Program with opportunities for on-campus enrichment No on-campus enrichment Students may move into HomeFlex upon application and acceptance into the program. Students may move out of HomeFlex and into the the DL Strand or Full On Campus with 1 week's notice
Phase 1	<ul style="list-style-type: none"> Full Distance Learning Distance Learning Strand HomeFlex* 	0%	NA	Full Distance Learning <ul style="list-style-type: none"> All students learning virtually via Distance Learning HomeFlex* <ul style="list-style-type: none"> *with no on-campus instruction or enrichment



DISTANCE LEARNING PLAN



Continuity of Instruction

Loose/Tight
Geographically Neutral



Devices and Connectivity

iPads and Mifis



Participation and Progress

Attendance and
Participation



Professional Development

Content and Tech Tools



Shifting Roles

Flexing Positions



Unique Needs

Students with
Disabilities

PUPIL LEARNING LOSS

NOT reteaching the last trimester of last year.



RIGOROUS, ON-LEVEL INSTRUCTION



DELIVERED

In small group settings

JUST-IN-TIME SUPPORT



SCHEDULED

For every student who needs it,
every period for middle school
4 days per week for elementary



02.

MENTAL HEALTH

MENTAL HEALTH



Students

Socio-emotional screener,
Socio-emotional learning block
every day



STAFF

Professional Development:
Mindfulness, stress
management

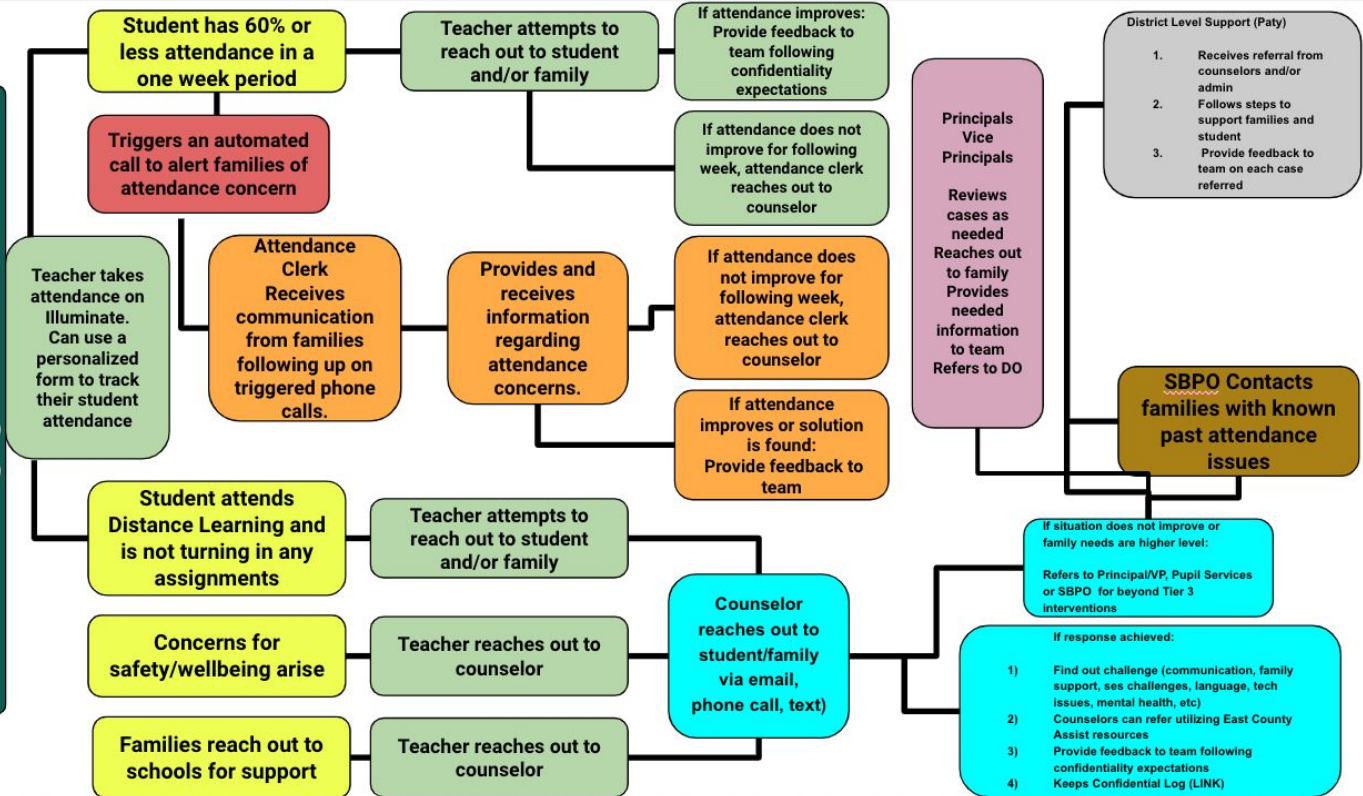


03.

ENGAGEMENT

RE ENGAGEMENT

Student Engagement Flowchart



Breakfast

no charge to any child ages 2-18.

Parents may pick up meals without the child being present.

For short-term and long-term distance learners and during hybrid instruction, a daily drive-thru pick-up at the district's Central Kitchen will provide breakfast and lunch to take home before school hours.

For the in-person instruction, breakfasts will be served to students while students are on campus. At select sites, a second-chance breakfast may be offered.

Lunch

no charge to any child ages 2-18.

Parents may pick up meals without the child being present.

For short-term and long-term distance learners and during hybrid instruction, a daily drive-thru pick-up at the district's Central Kitchen will provide breakfast and lunch to take home before school hours.

For hybrid instruction when students are on campus and for the traditional in-person instruction, lunch will be served to students while they are at school.

When all restrictions are lifted, lunch will return to normal.



04.

INCREASED AND IMPROVED SERVICES



Low SES, Foster Youth, Homeless Students

Universal Screeners

Academic and
Socio-Emotional

Adaptive Software

Personalized learning
paths

Mental Health Services & Behavior Specialist

Deeper level of
support

Multi-Tiered System of Support TOSA

Kid Watch Process

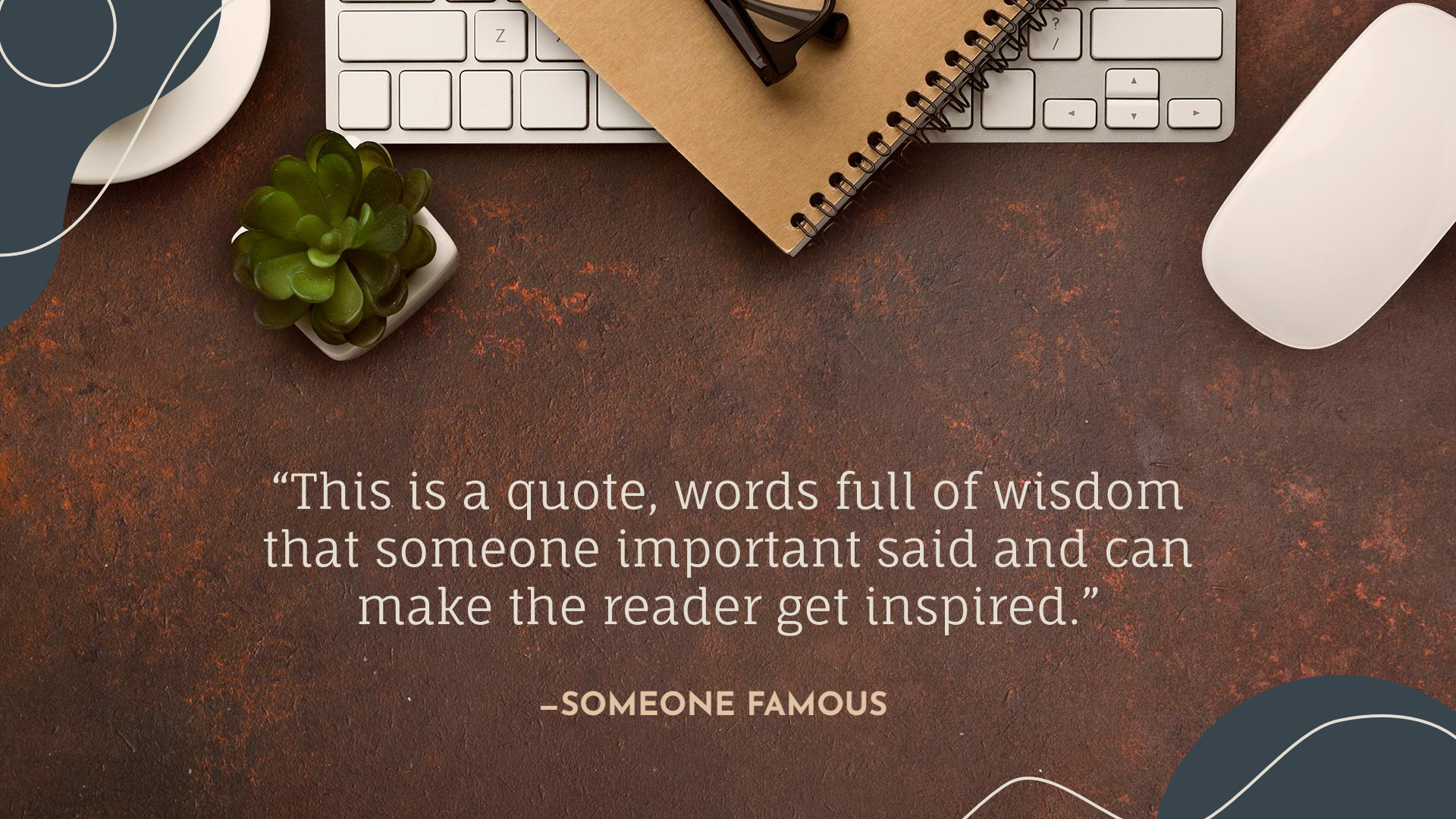




THANK YOU!

Public Hearing
September 10, 2020

CREDITS: This presentation template was created
by **Slidesgo**, including icons by **Flaticon**, and
infographics & images by **Freepik**

A top-down view of a desk with a dark, textured brown surface. In the upper left, a small green succulent in a white pot sits next to a white computer mouse. A white keyboard is partially visible at the top, with a brown spiral-bound notebook resting on it. A pair of black-rimmed glasses is placed on the notebook. A white computer mouse is on the right side. Decorative blue and white curved lines are in the corners.

“This is a quote, words full of wisdom
that someone important said and can
make the reader get inspired.”

—SOMEONE FAMOUS

CONTENTS OF THIS TEMPLATE

Here's what you'll find in this **Slidesgo** template:

1. A slide structure based on a multi-purpose presentation, which you can easily adapt to your needs. For more info on how to edit the template, please visit **Slidesgo School** or read our **FAQs**.
2. An assortment of pictures and illustrations that are suitable for use in the presentation can be found in the **alternative resources** slide.
3. A **thanks** slide, which you must keep so that proper credits for our design are given.
4. A **resources** slide, where you'll find links to all the elements used in the template.
5. **Instructions for use**.
6. Final slides with:
 1. The **fonts and colors** used in the template.
 2. A selection of **illustrations**. You can also customize and animate them as you wish with the online editor. Visit **Stories by Freepik** to find more.
 3. More **infographic resources**, whose size and color can be edited.
 4. Sets of **customizable icons** of the following themes: general, business, avatar, creative process, education, help & support, medical, nature, performing arts, SEO & marketing, and teamwork.

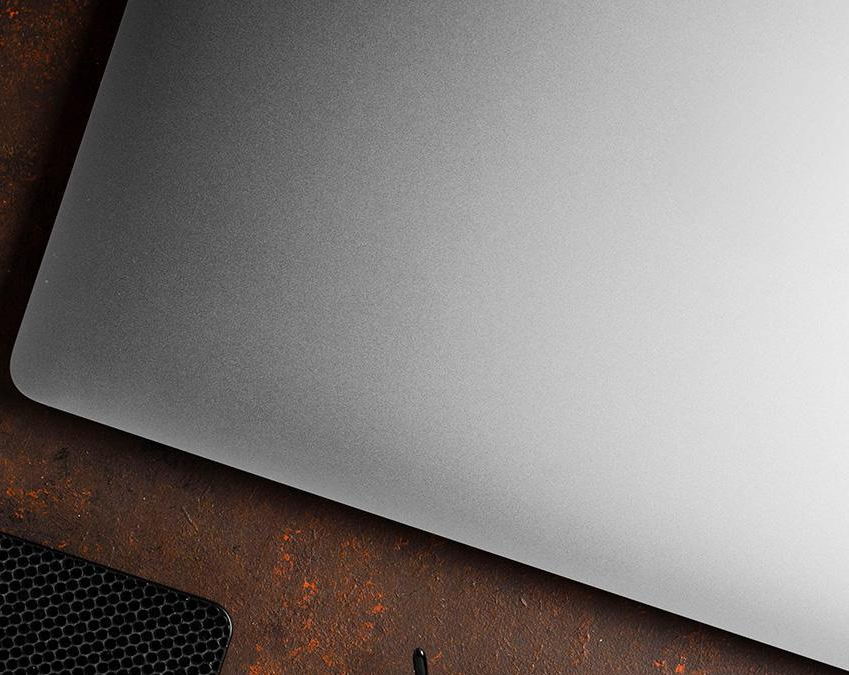
You can delete this slide when you're done editing the presentation.

THE SLIDE TITLE GOES HERE!

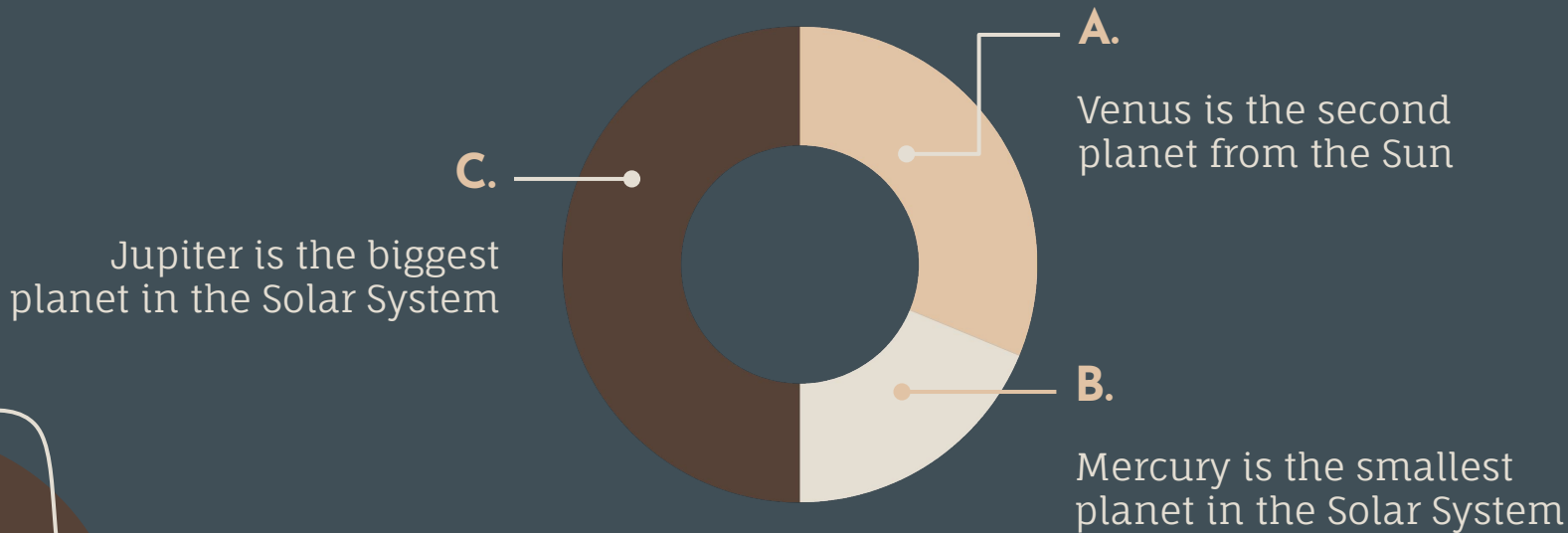
Do you know what helps you make your point clear?
Lists like this one:

- They're simple
- You can organize your ideas clearly
- You'll never forget to buy milk!

Distance Learning Committee

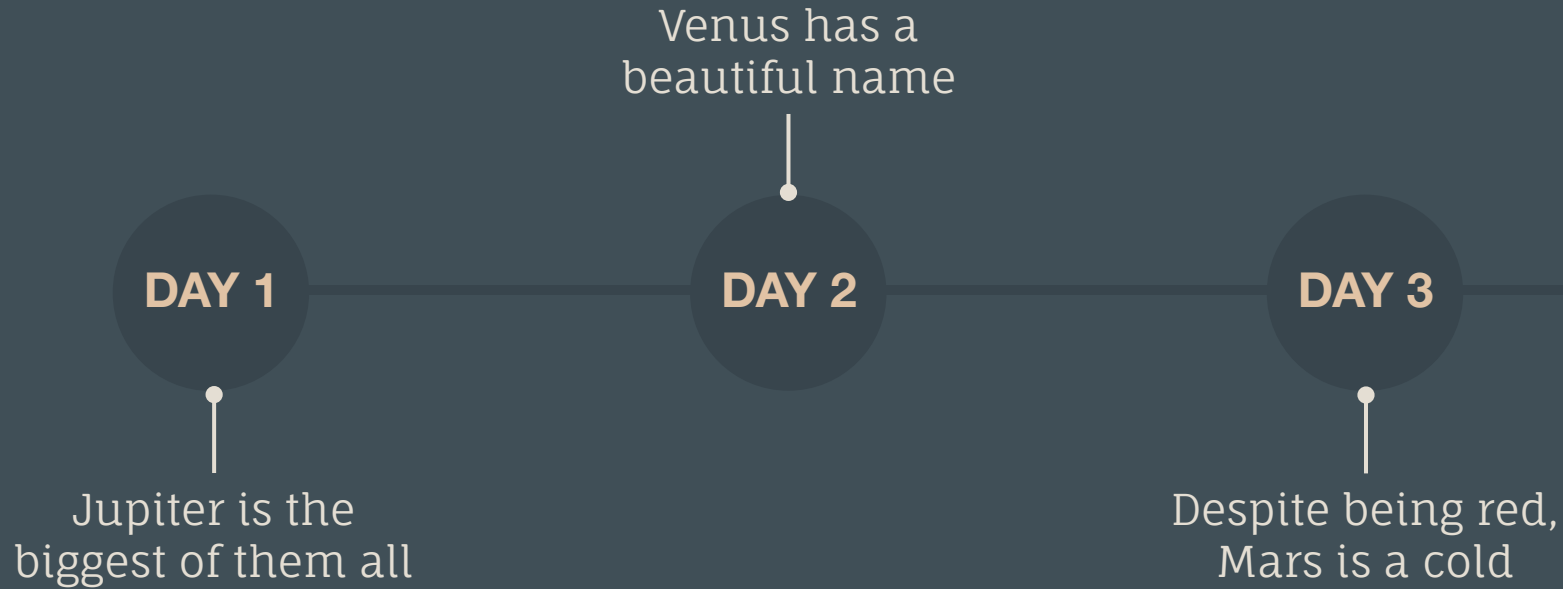


TO MODIFY THIS GRAPH, CLICK ON IT,
FOLLOW THE LINK, CHANGE THE DATA
AND PASTE THE NEW GRAPH HERE





THIS TIMELINE...



... CONTINUES HERE

Mercury is the
smallest planet

DAY 4

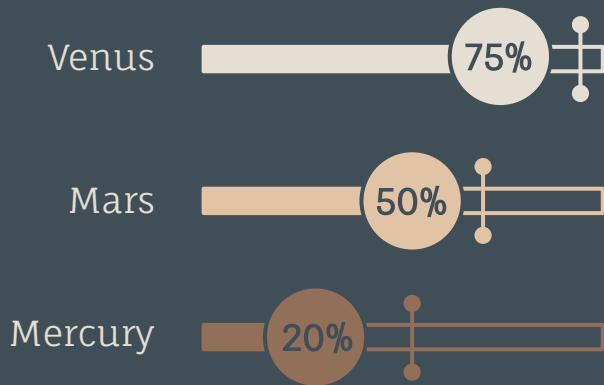
DAY 5

Neptune is the
farthest planet

Saturn is the
ringed one

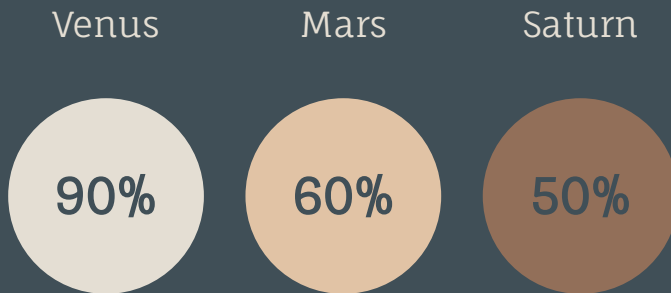
DAY 6

INFOGRAPHICS MAKE YOUR IDEA UNDERSTANDABLE



Despite being red, Mars is
actually a cold place

GOALS!



Mercury is the smallest
planet in the Solar System



44,000,000

Big numbers catch your audience's attention easily

THIS IS A MAP



Jupiter is a gas giant, the fifth planet from the Sun and also the biggest planet in the Solar System

A top-down view of a dark gray notebook lying on a rusty, brown metal surface. To the left of the notebook are a black pencil with a gold eraser, a black pen, and a pair of black-rimmed glasses. Below these is a black, textured rectangular object. To the right of the notebook, a cup of coffee on a gray napkin and a pair of black-rimmed glasses are visible. The notebook has two lines of text in a light beige font. The first line shows a percentage, and the second line shows a statement. The second line shows a percentage, and the third line shows a statement. The background is a textured, rusty metal surface.

25.4%

Jupiter is a gas giant

98.5%

Venus is beautiful

ADVERTISING

Mercury is the closest planet to the Sun and the smallest one in the Solar System—it's only a bit larger than the Moon

333,000.00

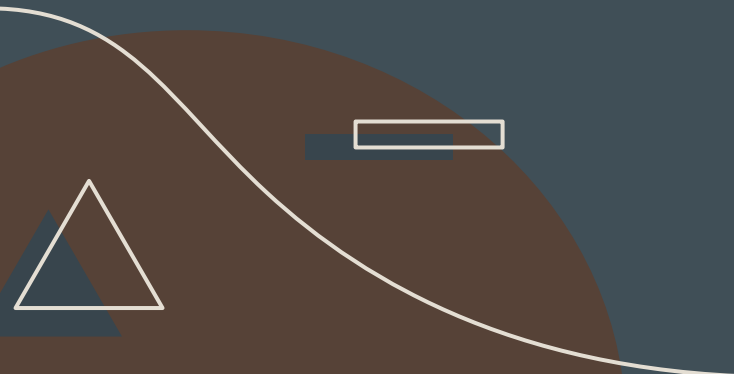
earths is the Sun's mass

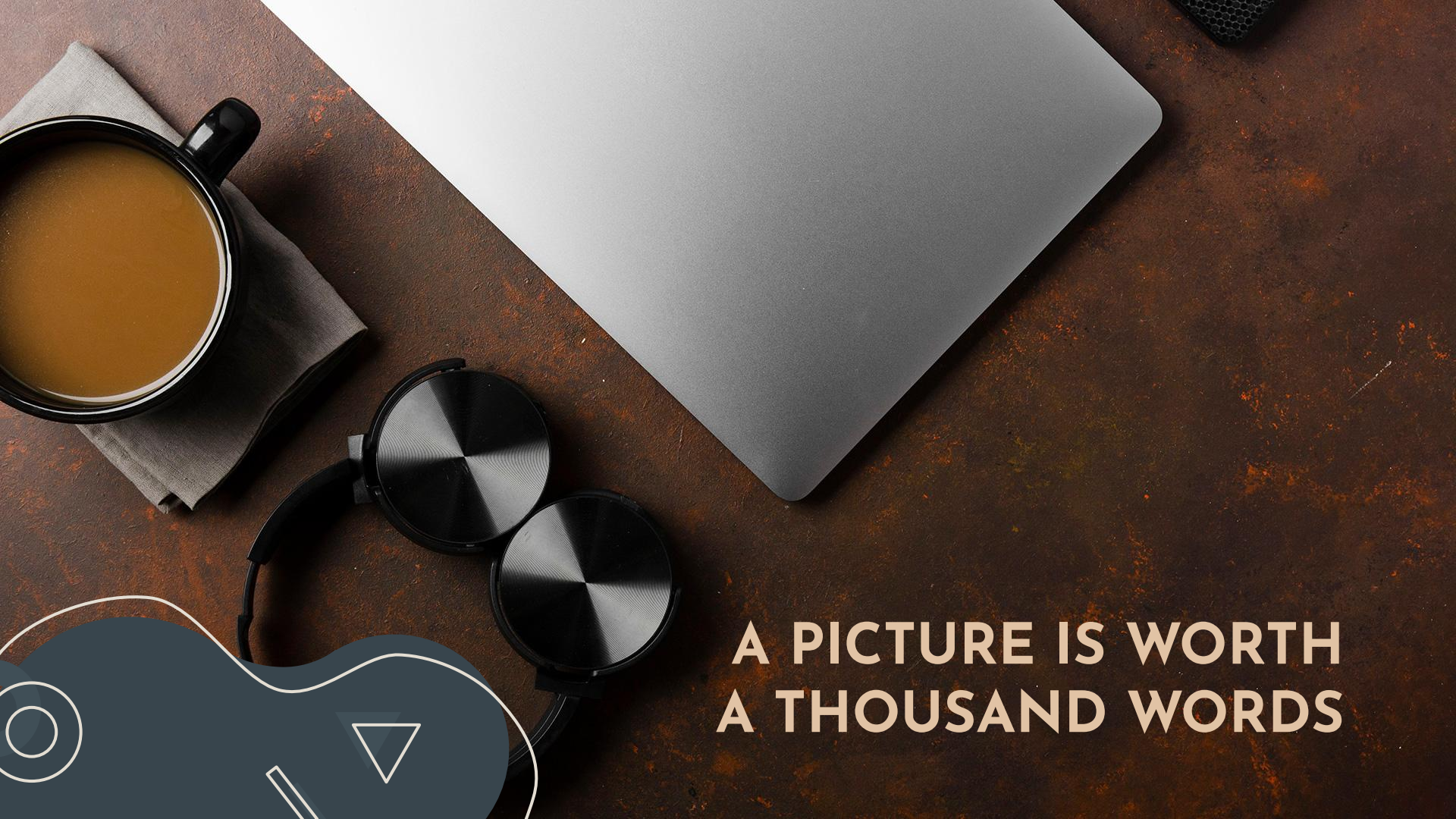
24h 37m 23s

is Jupiter's rotation period

386,000 km

is a long distance





**A PICTURE IS WORTH
A THOUSAND WORDS**

OUR SERVICES

\$0

You can explain
your product or
your service

Characteristic
Characteristic

FREE

\$45

You can explain
your product or
your service

Characteristic
Characteristic

PRO

\$90

You can explain
your product or
your service

Characteristic
Characteristic

PREMIUM

PROMOTION



MERCURY

Mercury is the innermost planet of them all



VENUS

Venus has a beautiful name, but it's very hot



MARS

Despite being red, Mars is actually a cold place

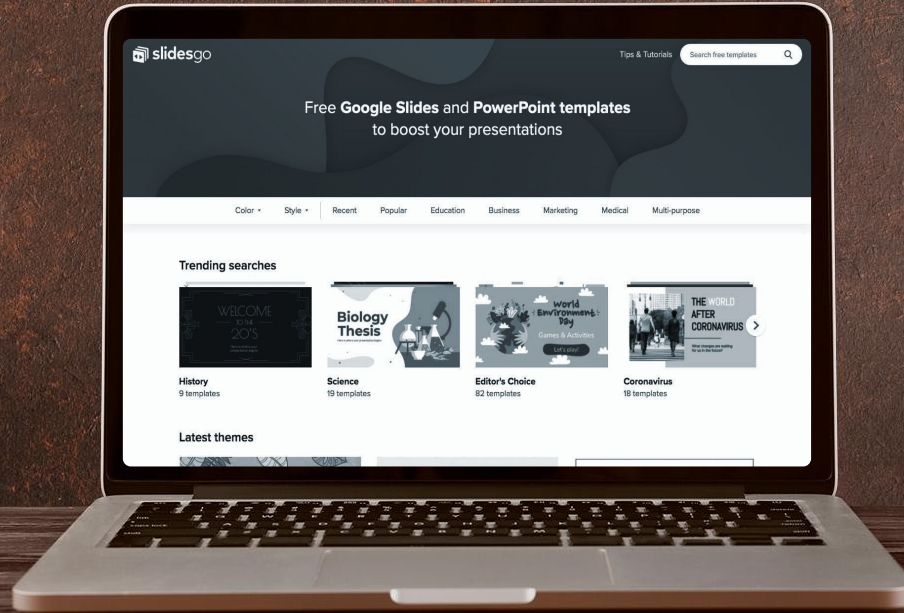


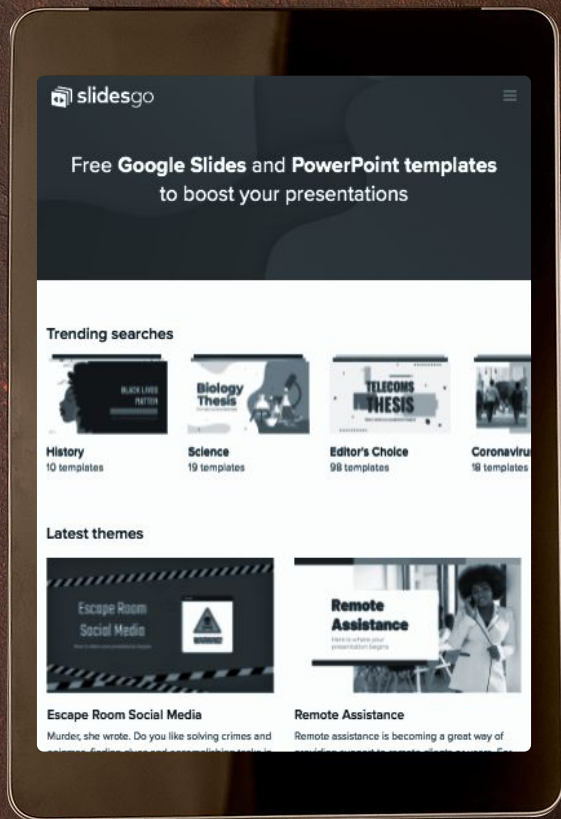
SATURN

Saturn is a gas giant and has several rings

DESKTOP SOFTWARE

You can replace the image on the screen with your own work. Right-click on it and then choose "Replace image" (in Google Slides) or "Change Picture" (in PPT) so you can add yours



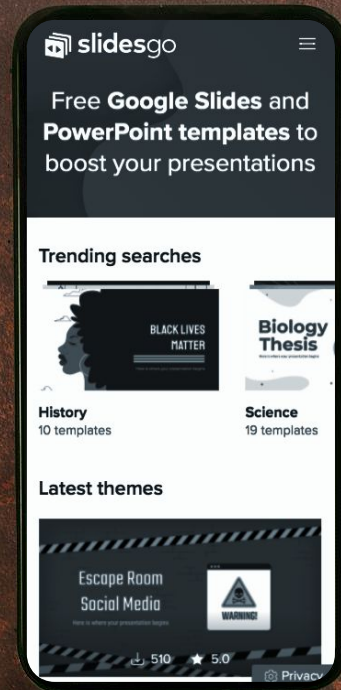


TABLET APP

You can replace the image on the screen with your own work. Right-click on it and then choose "Replace image" (Google Slides) or "Change Picture" (PPT) so you can add yours

MOBILE WEB

You can replace the image on the screen with your own work. Right-click on it and then choose "Replace image" (in Google Slides) or "Change Picture" (in PPT) so you can add yours



CONCEPTS



VENUS

Venus has a beautiful name, but it's hot



MERCURY

Mercury is the closest planet to the Sun



MARS

Despite being red, Mars is a cold place



SATURN

Saturn is the ringed one and a gas giant



LIST 1

- Name your points
- Name your points
- Name your points
- Name your points

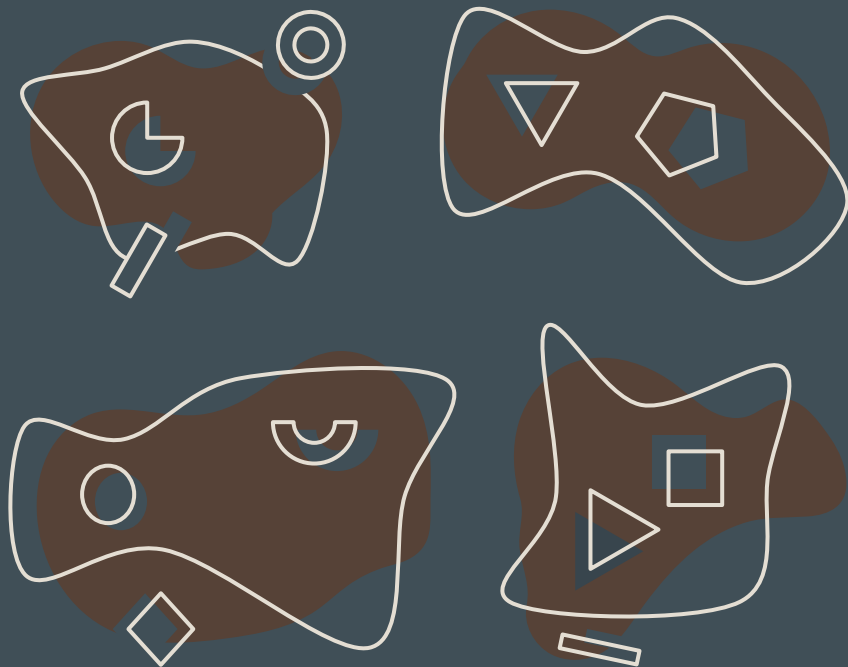


LIST 2

- Name your points
- Name your points
- Name your points
- Name your points

ALTERNATIVE RESOURCES

- Abstract pastel background
- Flat lay of workstation with laptop and headphones
- Flat lay of workstation with laptop and cup of tea
- Top view of desk concept with copy space
- Flat lay of desktop with laptop and copy space
- Top view of workspace with notebook and succulents
- Close-up view of desk dark concept
- Flat lay of desk dark concept with copy space



RESOURCES

PHOTOS

- Top view of desk concept with copy space
- Flat lay of desk concept with copy space
- Top view of desk concept with copy space
- Top view of desk concept with copy space
- Flat lay of desk concept with copy space
- Flat lay of desk concept with copy space
- Flat lay of desk concept with copy space
- Top view of office desk during work
- Top view smartphone template over workspace
- Top view of desk concept with copy space
- Workspace opened laptop and diary on desk
- Stationery arrangement with tablet mock-up
- Portrait of smiling confident young businesswoman with arm crossed

- Confident young businesswoman holding clipboard looking at camera
- Front view of desk concept mock-up
- Flat lay desktop with coffee cup and succulent

VECTOR

- Blue world map

Instructions for use

In order to use this template, you must credit [Slidesgo](#) by keeping the **Thanks** slide.

You are allowed to:

- Modify this template.
- Use it for both personal and commercial projects.

You are not allowed to:

- Sublicense, sell or rent any of Slidesgo Content (or a modified version of Slidesgo Content).
- Distribute Slidesgo Content unless it has been expressly authorized by Slidesgo.
- Include Slidesgo Content in an online or offline database or file.
- Offer Slidesgo templates (or modified versions of Slidesgo templates) for download.
- Acquire the copyright of Slidesgo Content.

For more information about editing slides, please read our FAQs or visit Slidesgo School:

<https://slidesgo.com/faqs> and <https://slidesgo.com/slidesgo-school>

Fonts & colors used

This presentation has been made using the following fonts:

Josefin Sans

(<https://fonts.google.com/specimen/Josefin+Sans>)

Fauna One

(<https://fonts.google.com/specimen/Fauna+One>)

#E4DED3

#E1C3A5

#926F59

#564327

#404F57

Stories by Freepik

Create your Story with our illustrated concepts. Choose the style you like the most, edit its colors, pick the background and layers you want to show and bring them to life with the animator panel! It will boost your presentation. Check out [How it Works](#).



Pana



Amico



Bro



Rafiki

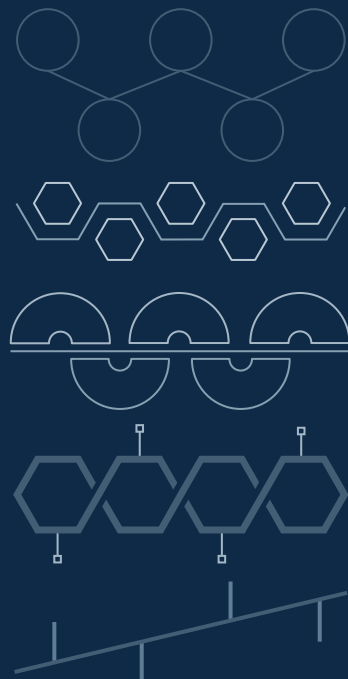
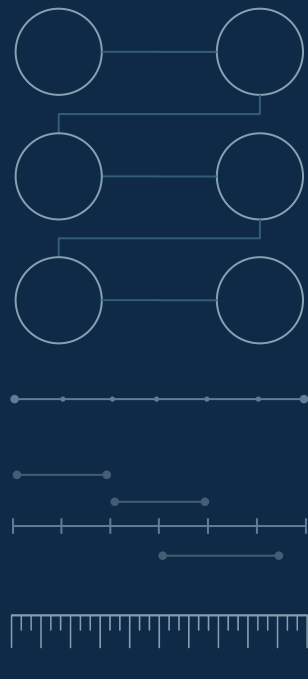
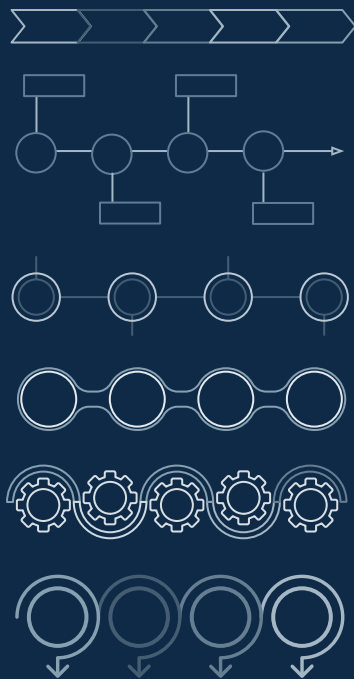
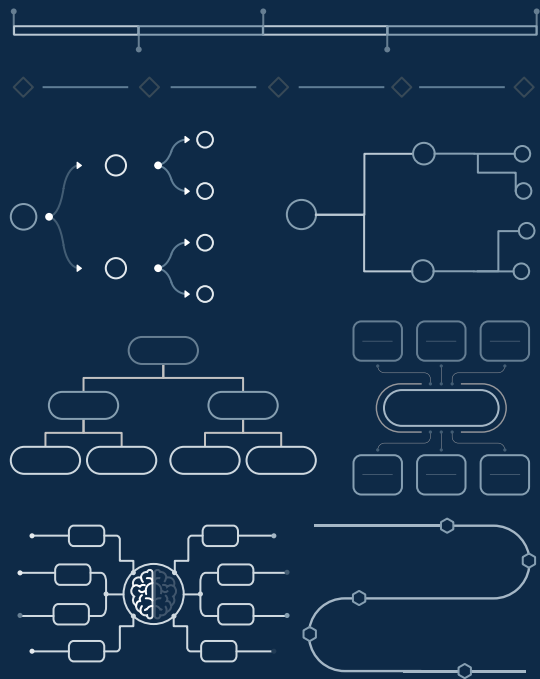
Use our editable graphic resources...

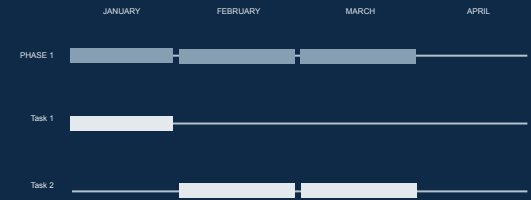
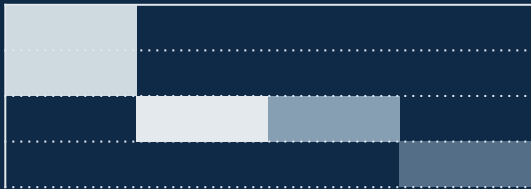
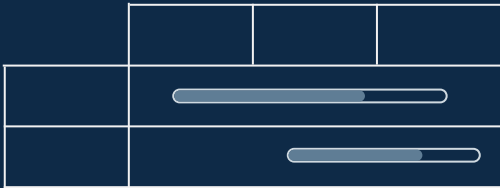
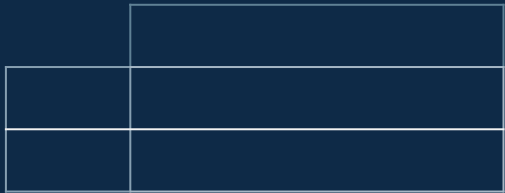
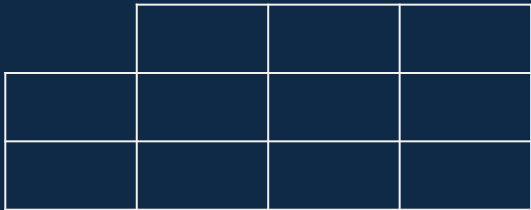
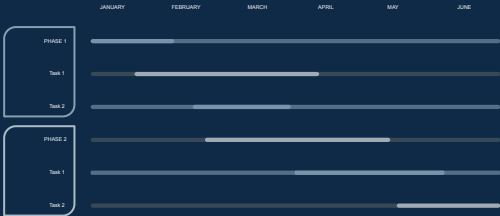
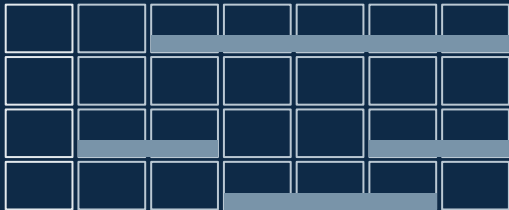
You can easily [resize](#) these resources without losing quality. To [change the color](#), just ungroup the resource and click on the object you want to change. Then, click on the paint bucket and select the color you want.

Group the resource again when you're done. You can also look for more [infographics](#) on [Slidesgo](#).

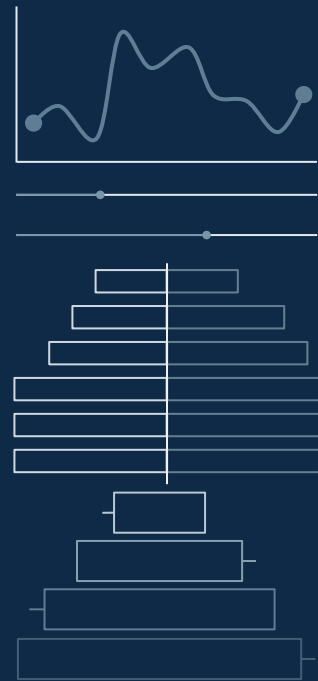
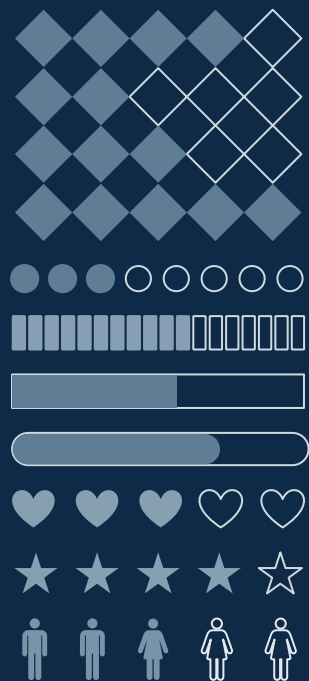
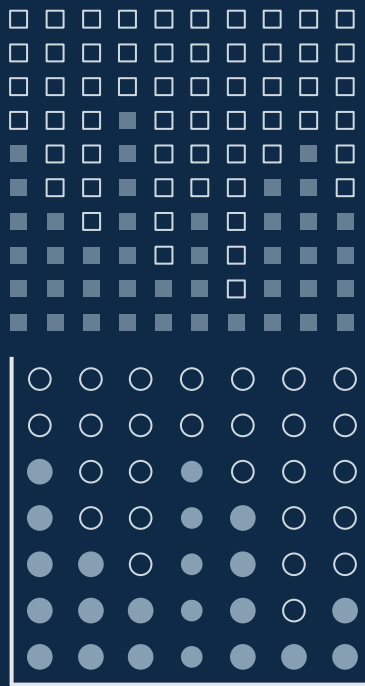












...and our sets of editable icons

You can resize these icons without losing quality.

You can change the stroke and fill color; just select the icon and click on the paint bucket/pen.

In Google Slides, you can also use Flaticon's extension, allowing you to customize and add even more icons.



Educational Icons



Medical Icons



Business Icons



Teamwork Icons



Help & Support Icons



Avatar Icons



[illegible]

Nature Icons



SEO & Marketing Icons



