

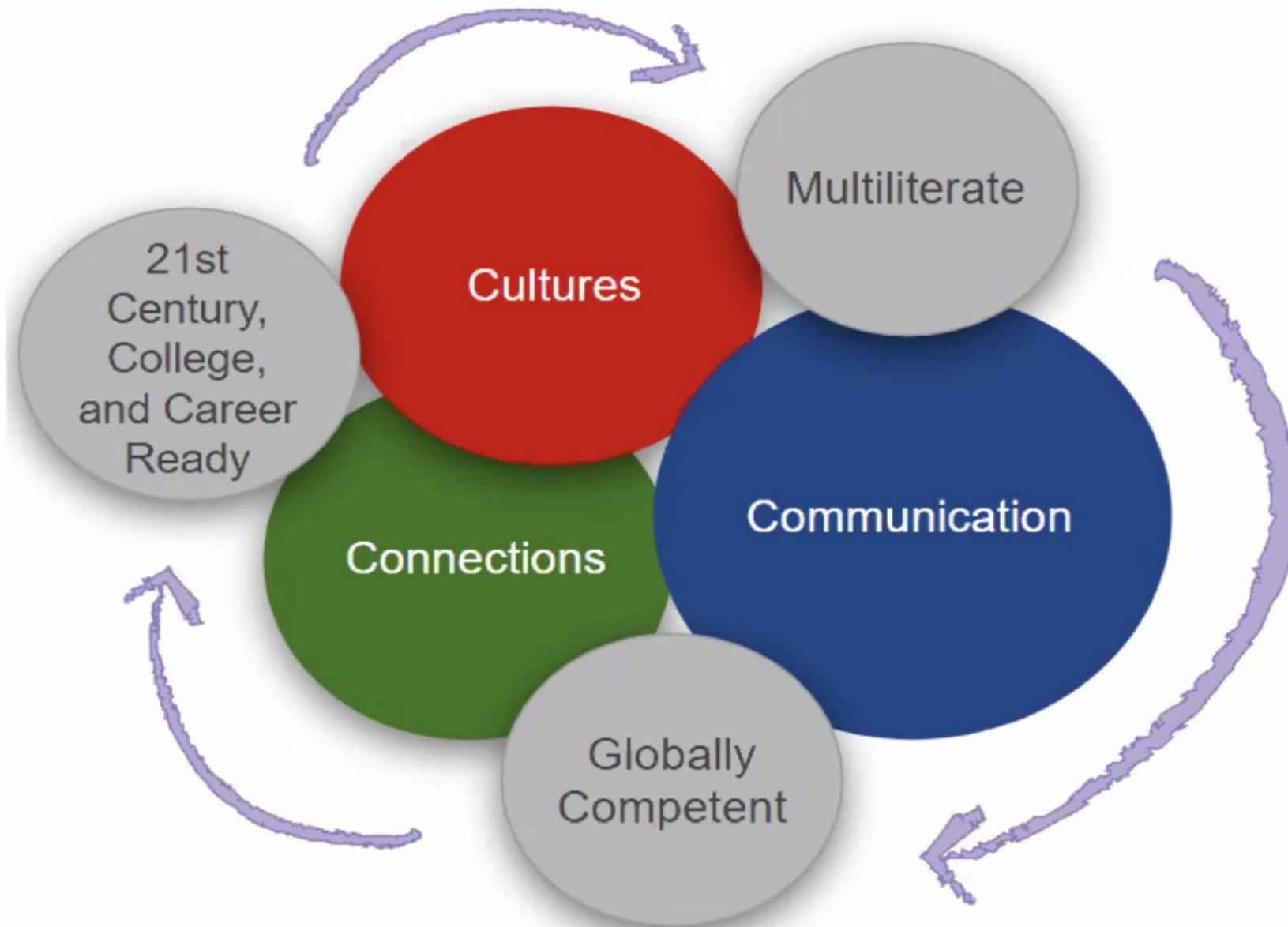
LAKE SIDE UNION SCHOOL DISTRICT

2022-2023



IMMERSION PROGRAMS
SPOTLIGHT PRESENTATION

Overarching Goals of World Language Learning

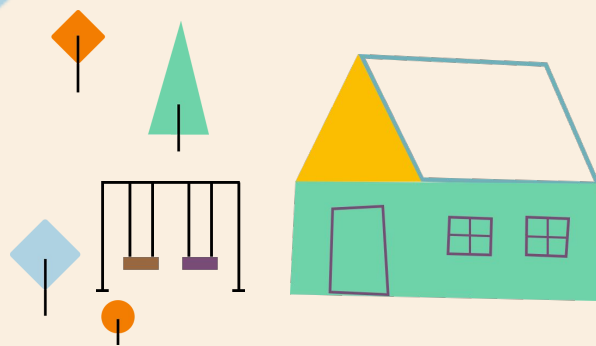


Benefits

Knowing other languages and cultures:

- Brings educational opportunities
- Opens doors
- Leads to employment opportunities
- Strengthens literacy and problem solving skills
- Bridges multiple cultural and language worlds

1



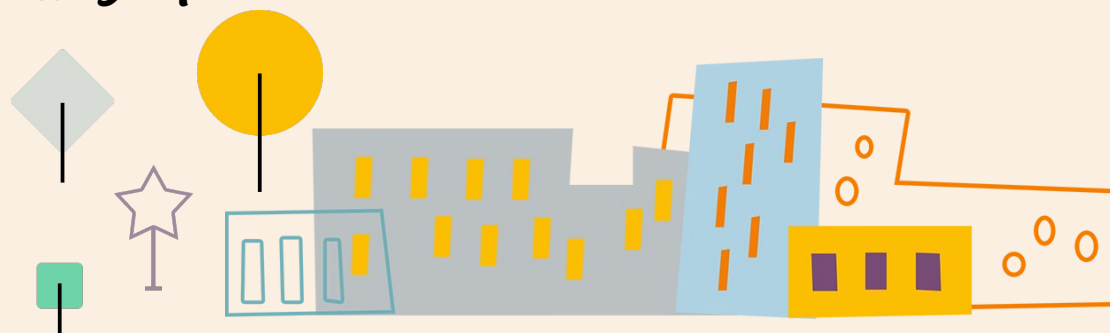
TK Spanish Programs:
School-Site based TK Program

2



K-5 Language Immersion Programs:

1. **Riverview International Academy** (One-Way: Spanish and Mandarin with the 3rd Language)
2. **Lakeview Elementary** (One-Way: Spanish)



3

6-8 Middle School Immersion Programs:

1. **Lakeside Middle School**
2. **Tierra del Sol Middle School**

4



9-12 High School Language Program:

1. **El Capitan High School (GUHSD)**
Global Language Leadership Program



K-12
LANGUAGE
PROGRAM
PATHWAY

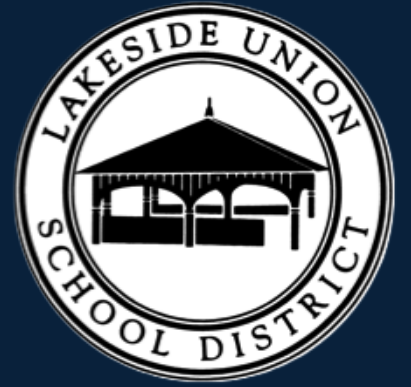
High School Connection

- Strong middle School - High School collaboration
- El Capitan High School - Global Language and Leadership Program





Lakeview Elementary



Spanish Immersion Kindergarten
Information Night

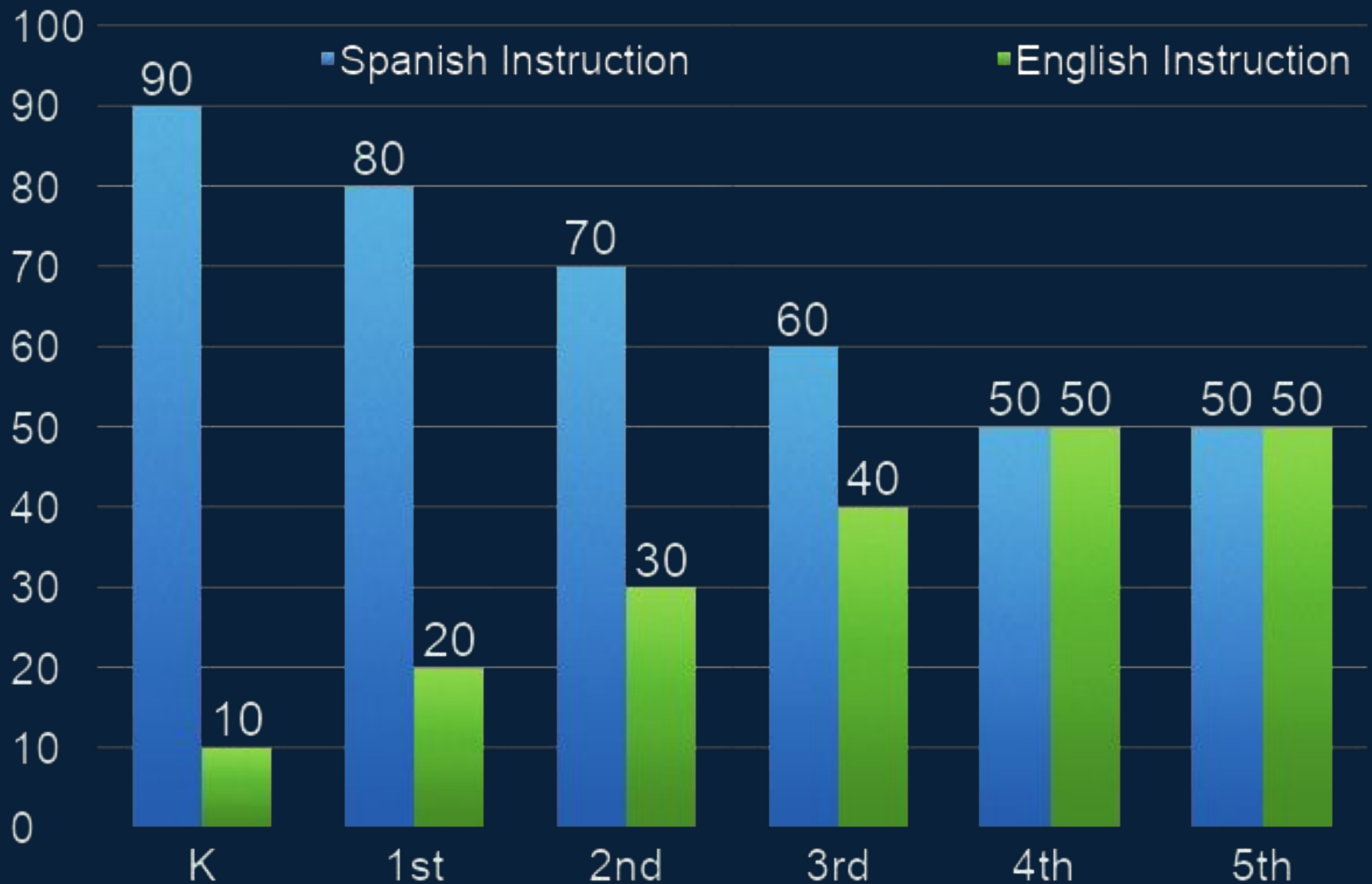
Our Amazing Kindergarten Team...

**Maestra
Barcellos**



**Maestra
Nunez**

Lakeview's Spanish Immersion Model



What Makes Lakeview's Spanish Immersion Program so Special?



Lakeview FAQ's...

- How will I help my child with homework?
 - Instruction will be in English, concepts are worked on in class, teachers use visual, music, and videos in Spanish, w/reading being in English
- How will my child progress in English when instruction is in Spanish?
 - Resources are in English and teachers use software like Smarty Ants/phonics in English
- What can I do to help my child prepare for the program?
 - Expose student to the Spanish language via youtube, such as letters, sounds, numbers, etc.
- What can I do to optimize my child's success?
 - Parent involvement and communication w/teacher
- What can I expect the first week? First month?
 - Anxiety, missing the parent, scared, but most important be patient and relay positive language to the student.

More Questions?
Reach out to:

Tiger Rowan, *Proud Principal*
Lakeview Elementary

Phone (619)390-2652

email: trowan@lsusd.net



RIVERVIEW INTERNATIONAL ACADEMY

.....
K-1 Winter Gardens Campus
2-5 Riverview Campus



RIA VISION

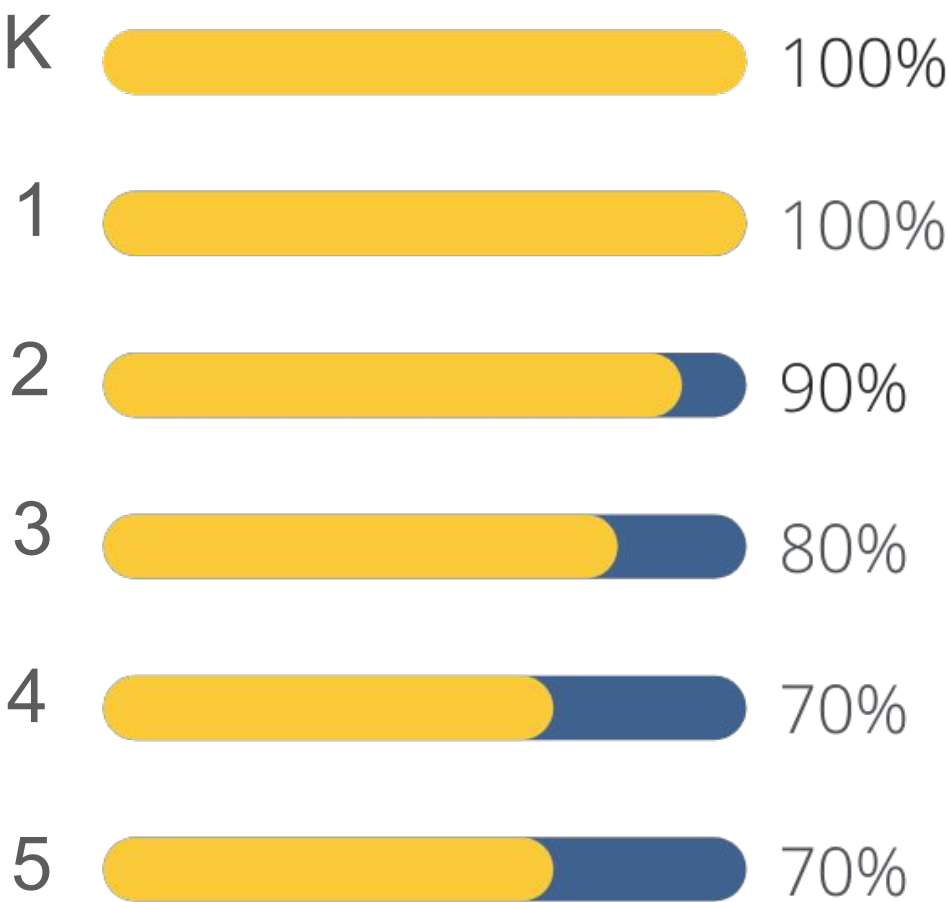


Creating tomorrow's global leaders!

The vision of Riverview International Academy (RIA) is to prepare students to thrive in a global society. Students who promote from RIA will leave with the skills necessary to **communicate** effectively across **linguistic** and **cultural** boundaries; see and understand the world from multiple perspectives; comprehend global affairs and events and create possibilities to address them.

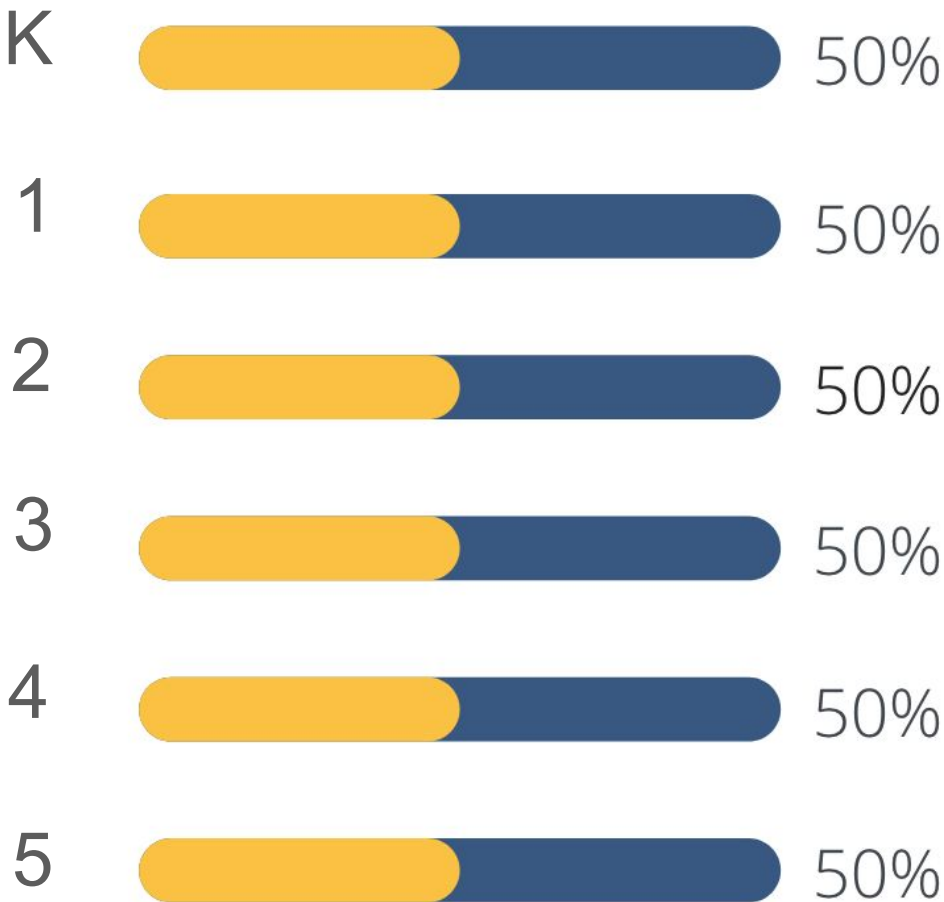
RIA Language Progression Pathways

Spanish Pathway



English: Non-transferable skills 2nd-5th
Science reinforcement 4th & 5th
Mandarin Enrichment

Mandarin Pathway



English: 50/50 ELA, Science, Social Studies,
Math Reinforcement, Art/PE
Spanish Enrichment

OUR RIA STORY



RIA Kindergarten Team



Sra. Mitlich



Sr. Guajardo



Mrs. Sather



Sra. Rocha



Sra. Stewart

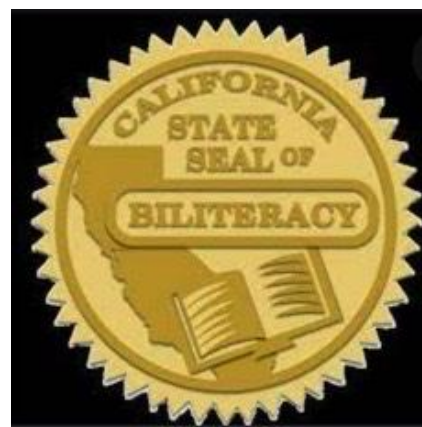


Li Laoshi



Sra. Smith

RIA's Results



Creating tomorrow's global leaders!

RIA FAQs



How does my child understand the teacher if they only speak in Spanish or Chinese? How does my child learn English (math, reading and writing)? Will my child be able to speak English in class until s/he learns enough vocabulary to communicate?

Our teachers use music, movement, artifacts, visuals, and shared experiences to engage the students in the novel language experience. The students use their investigative skills and determine the messaging without the entire code. Our teachers understand when the students speak in English and model vocabulary, phrasing, and contextual usage. **Additionally, essential directions (e.g. how to use the bathroom or get help) are covered by English staff to ensure clarity from the get-go.**

How do students in dual language programs compare academically to students in other types of educational programs?

In the long run, our immersion students are highly competitive with monolingual students by middle school and tend to surpass by high school and beyond. The skills they learn in the target language(s) transfer content areas as well as boost brain strength and capacity.

Is an immersion program only appropriate for high-performing students?

Immersion programs are accessible to and designed for all types of learners. With support and guidance, any student can be successful.

What supports are in place if my student struggles with acquiring the target language?	In class, teachers offer small group interventions as well as individualized instruction and differentiated feedback. We host international intern teachers, partner with student alumni tutors, and our PTSA facilitates a student-to-student, family-to-family Mustang Mentorship program. We also offer parent sessions filled with information, experience, and user-friendly tips.
When will we know if the program is a good fit for our child?	Immersion is a long-term commitment. We recommend K-12+ with minimum of K-5. All students acquire language at different rates and sometimes progress takes one step forward and two steps back. Be patient, understanding, and full of encouragement.
How can we support at home (even if we do not speak Spanish or Mandarin)? Do you recommend we help with the target language?	Our program is powerful! The more cumulative language experience you build in the home language, the more likely your language learner will be able to transfer knowledge. Native language development is the most valuable resource you can share at home.
What does the home practice look like?	All home practice is an extension of classroom instruction and is considered independent practice. Teachers share digital language tools (videos, recordings, etc) for easy access.
How do you keep two campuses united as one? What about families that have kids at both?	We have shared leadership on both campuses. The leadership and office staff collaborate and communicate daily, minute by minute. Weekly newsletters, detailed bulletins, and instant Hangout announcements keep everyone on the same page and in the loop. Office staff, teachers, specialized support staff and campus supervisors work toward common goals. PTSA campus events are also coordinated and streamlined.

RIA FAQs



More Questions?

Reach out to:

Grace Cox, Proud Principal

Riverview International Academy

Phone (619)390-2662

email: gcox@lsusd.net

SCHOOL CONTACTS

❖ Lakeview - Tiger Rowan, Principal: trowan@lsusd.net

➤ Jackie Siragusa, Secretary: jsiragusa@lsusd.net

❖ RIA: Riverview & Winter Gardens - Grace Cox, Principal: gcox@lsusd.net

➤ Peggy McKay, Secretary: pmckay@lsusd.net

❖ District Office - Teri Cook, Registration questions: tcCook@lsusd.net

Registration Steps

Enrollment is based on residency where parent/student reside

- School Choice - live within Lakeside district boundary, choosing a school that is not your resident school
- Inter-district Transfer - live outside the Lakeside boundary and choosing any school in the Lakeside district
- If enrolling at your resident school you may complete registration beginning March 1st via our online parent portal

What Are My Next Steps?

1

Determine your School

Submit your School Choice or Inter-district transfer during application window

Application window:

February 1 - April 15, 2022

2

Gather Your Documents

Required documents:

- Birth certificate
- Immunization record
- Proof of Residency
- Health & Dental screening

3

Online Registration

Registration begins March 1st

All links will be available on the district website:
lsusd.net

Select the Enroll Today tab at top of the page



New Universal Transitional Kindergarten

Students who will turn 5 years old between September 2, 2022 - February 28, 2023
are now eligible for new Universal TK program

Complete the TK Interest form for more information:

<https://tinyurl.com/lsudTK>

Q&A

